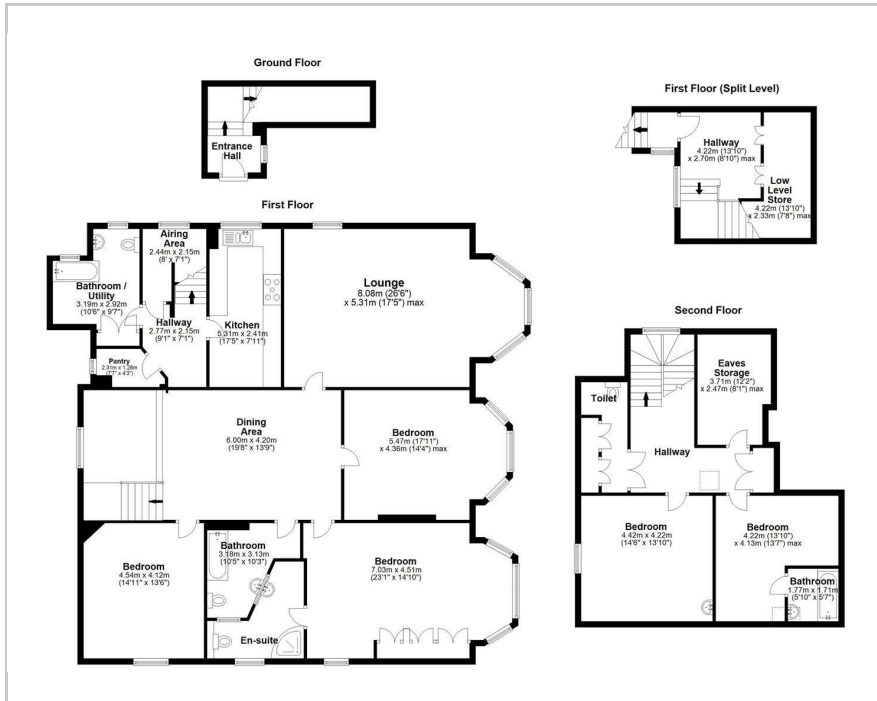




The Apartment, Penrhyn House Clumber Road East, Nottingham, NG7 1BD
£2,000 Per Month



Floor Plan



- Beautiful period property.
- Located in the prestigious Park Estate.
- 5 Large double bedrooms.
- 4 Bathrooms & additional WC.
- Very spacious property with traditional features.
- Brand new range cooker.
- Excellent storage space.
- Stunning views of The Park Estate.
- Within walking distance of the city centre.
- Great location for access to QMC & universities.



Area Map



Energy Efficiency Rating

	Current	Potential
<i>Very energy efficient - lower running costs</i>		
(92 plus) A		
(81-91) B		
(69-80) C		69
(55-68) D	50	
(39-54) E		
(21-38) F		
(1-20) G		
<i>Not energy efficient - higher running costs</i>		
England & Wales	EU Directive 2002/91/EC	

These particulars, whilst believed to be accurate are set out as a general outline only for guidance and do not constitute any part of an offer or contract. Intending purchasers should not rely on them as statements of representation of fact, but must satisfy themselves by inspection or otherwise as to their accuracy. No person in this firm's employment has the authority to make or give any representation or warranty in respect of the property.

3 Park Street, Derby Road, Lenton, Nottingham, NG7 1RR

Tel: 0115 9120061 Email: mail@ms-estates.co.uk www.ms-estates.co.uk