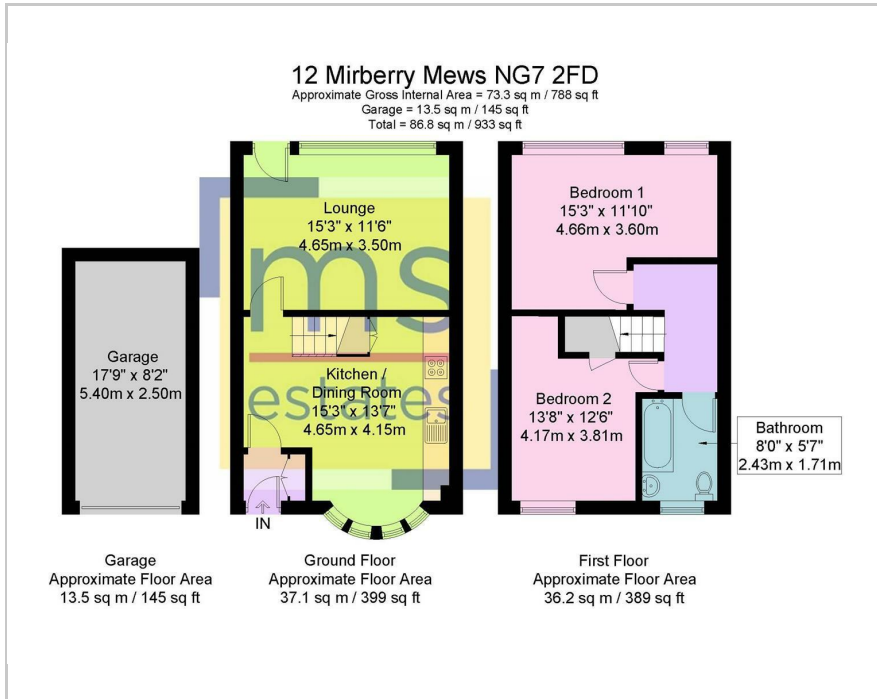




12 Mirberry Mews, Nottingham, NG7 2FR
£200,000



Floor Plan



- Unexpectedly available again.
- Modern mews house.
- Private gated development.
- 2 bedrooms.
- Lounge with a separate dining kitchen.
- Gas central heating. Double glazing.
- Gardens to front and rear.
- Garage en-bloc and parking.
- To be sold with vacant possession.
- Close to QMC & University.



Area Map



Energy Efficiency Rating

	Current	Potential
Very energy efficient - lower running costs		
(92 plus) A		90
(81-91) B		
(69-80) C	77	
(55-68) D		
(39-54) E		
(21-38) F		
(1-20) G		
Not energy efficient - higher running costs		
England & Wales	EU Directive 2002/91/EC	

These particulars, whilst believed to be accurate are set out as a general outline only for guidance and do not constitute any part of an offer or contract. Intending purchasers should not rely on them as statements of representation of fact, but must satisfy themselves by inspection or otherwise as to their accuracy. No person in this firm's employment has the authority to make or give any representation or warranty in respect of the property.

3 Park Street, Derby Road, Lenton, Nottingham, NG7 1RR

Tel: 0115 9120061 Email: mail@ms-estates.co.uk www.ms-estates.co.uk