



£365,000 Share of Freehold
VINE COTTAGE, TENTELOW LANE, NORWOOD GREEN, UB2 4LG





A REALLY CHARMING TWO-BEDROOM 1ST FLOOR APARTMENT IN THIS UNIQUE WALLED DEVELOPMENT WITH COMMUNAL GARDENS AND OUTDOOR POOL.

Situated in this popular leafy location close to Norwood Green / Osterley Park and within easy reach of both Southall Crossrail (Elizabeth line station) Hounslow Town Centre alongside Heathrow Airport.

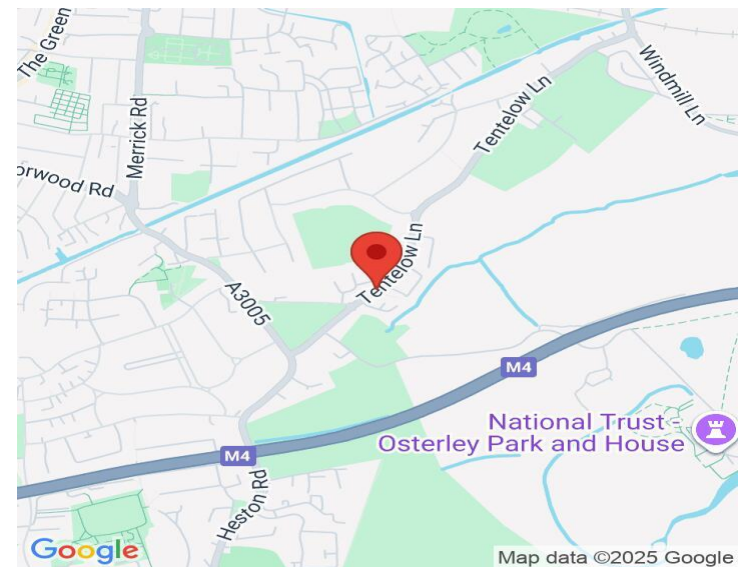
This charming purpose-built apartment comes with a good size 20' x 16' living room overlooking communal gardens and pool, fitted kitchen and bathroom, two double bedrooms, double glazing, electric heating, garage and secured parking.

Service Charge: £200.00 PCM

Share of Freehold: Underlying lease - 999 Years

COUNCIL TAX BAND: D

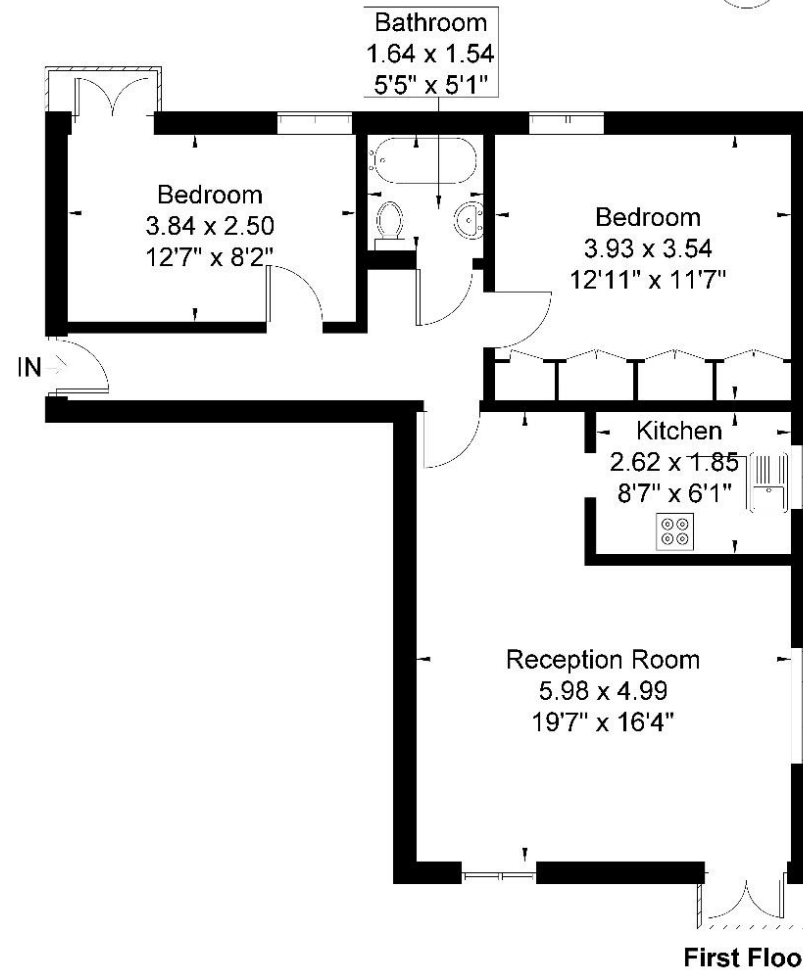
EPC Rating: C



www.sintonandrews.com
020 8566 1990

Vine Cottage

Approximate Gross Internal Area = 65 sq m / 699 sq ft



Although every attempt has been made to ensure accuracy, all measurements are approximate.
The floorplan is for illustrative purposes only and not to scale.
© www.perspective.co.uk

020 8566 1990

8 Spring Bridge Road, Ealing, London W5 2AA

SINTONANDREWS.COM

