



£420,000 Leasehold

LONG ACRE COURT, ARGYLE ROAD, EALING, W13 0DA





A SPACIOUS 2-BEDROOM FIRST FLOOR APARTMENT RIGHT BY CLEVELAND PARK.

Well placed in this elevated position just across the road from the pleasant open spaces of Cleveland Park and the nearby Pitshanger Park. A short stroll to the award-winning Pitshanger Village with its variety of excellent services. Approximately half a mile to West Ealing Station - enjoying all the benefits of the Elizabeth Line. Ealing Broadway Station and Town Centre is well served by regular bus routes on the doorstep.

This attractive and well-maintained apartment offers: Spacious living room. Modern kitchen. Smart bathroom. 2 Double bedrooms. Communal gardens. Double glazing throughout. Warmed by gas fired central heating. Off street parking on a "first come first served basis".

LEASE: 125 Years from 25th March 2003 (103 Years unexpired)

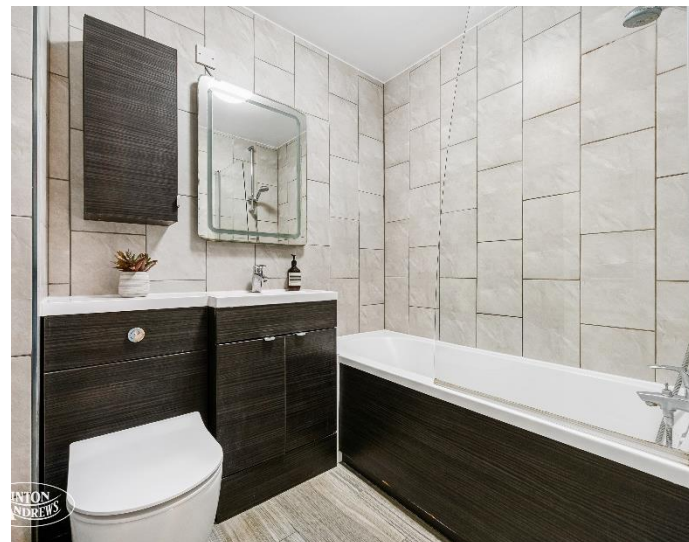
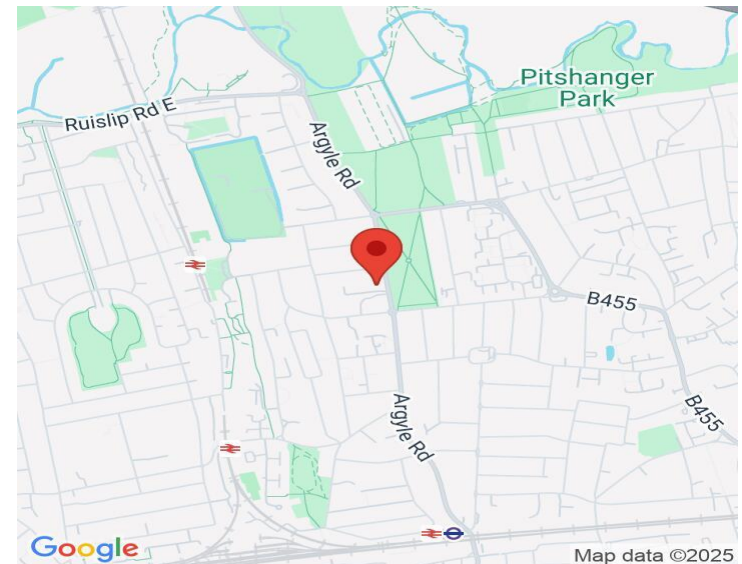
SERVICE CHARGE: £740.00 p.a.

GROUND RENT: £100.00 p.a.

BUILDING INSURANCE: £405.00 p.a.

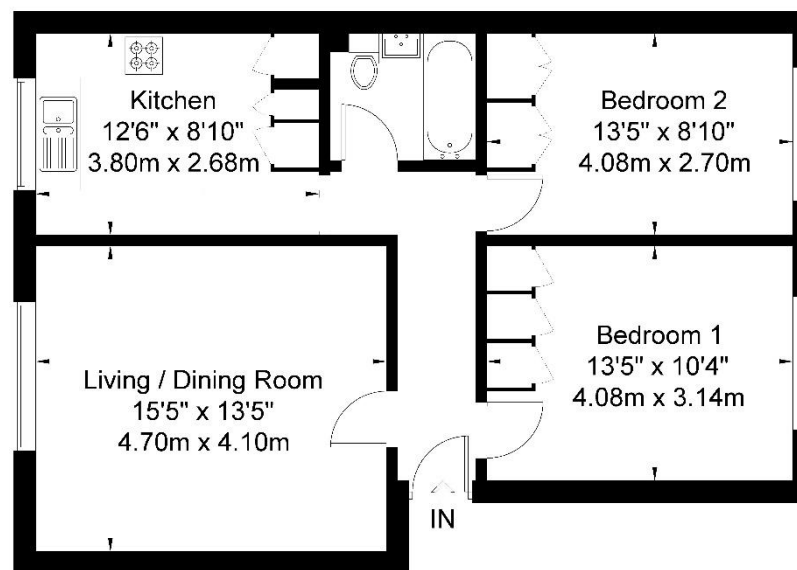
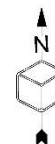
COUNCIL TAX BAND: C

EPC Rating: C



Long Acre Court, Argyle Road, Ealing W13 0DA

Approximate Gross Internal Area
First Floor = 65.4 sq m / 703 sq ft



First Floor



Cube Property Marketing © 2020
Illustration for identification purposes only,
measurements are approximate, not to scale.

020 8566 1990

8 Spring Bridge Road, Ealing, London W5 2AA

SINTONANDREWS.COM

