



£825,000 Share of Freehold

EATON RISE, EALING, W5 2HA





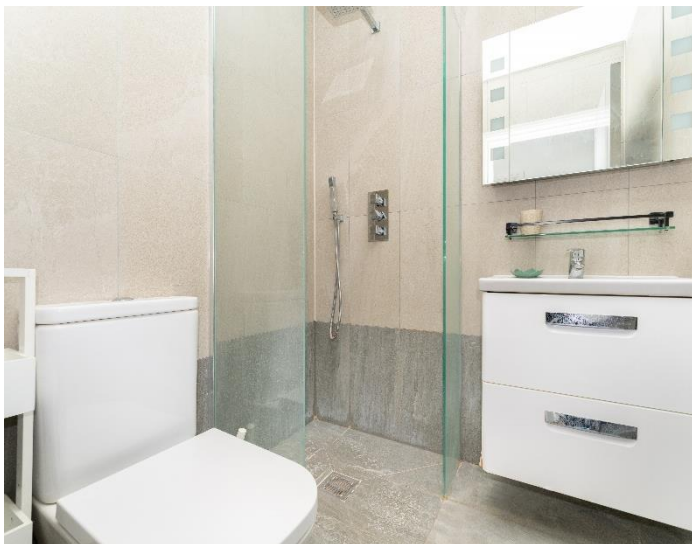
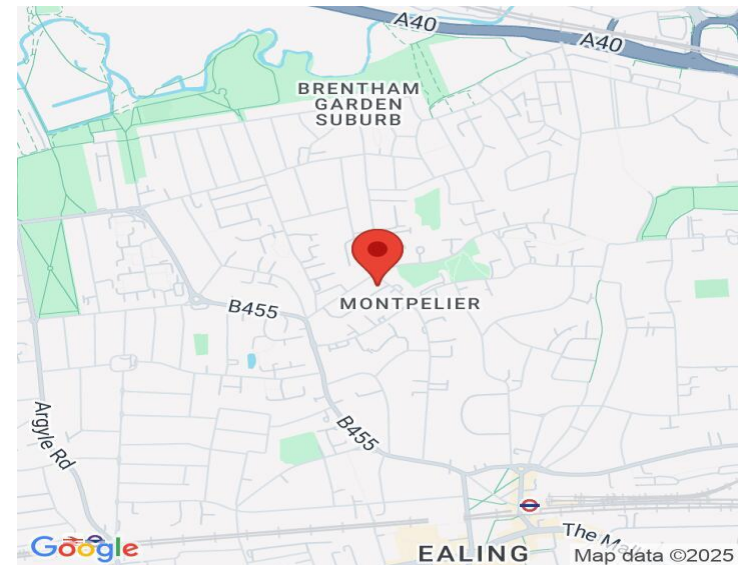
A LUXURIOUS AND SPACIOUS THREE-BEDROOM, TWO-BATHROOM GROUND-FLOOR CONVERSION, SET WITHIN A STUNNING PERIOD PROPERTY IN ONE OF EALING'S MOST SOUGHT-AFTER LOCATIONS.

This exceptional home enjoys a prime position near the beautiful Helena and Walpole Parks, with the vibrant Pitshanger Village and an array of esteemed schools, including Montpelier, St Gregory's and St Benedict's just a stone's throw away.

The apartment boasts an inviting open-plan living and kitchen area, complete with a stylishly designed, fully fitted kitchen. All three double bedrooms are generously proportioned, including a main bedroom with an ensuite shower room. Additional features include a modern family bathroom. Gas central heating and double glazing throughout. Residents benefit from access to expansive communal gardens, a well-equipped gym and convenient off-street parking.

COUNCIL TAX BAND: F

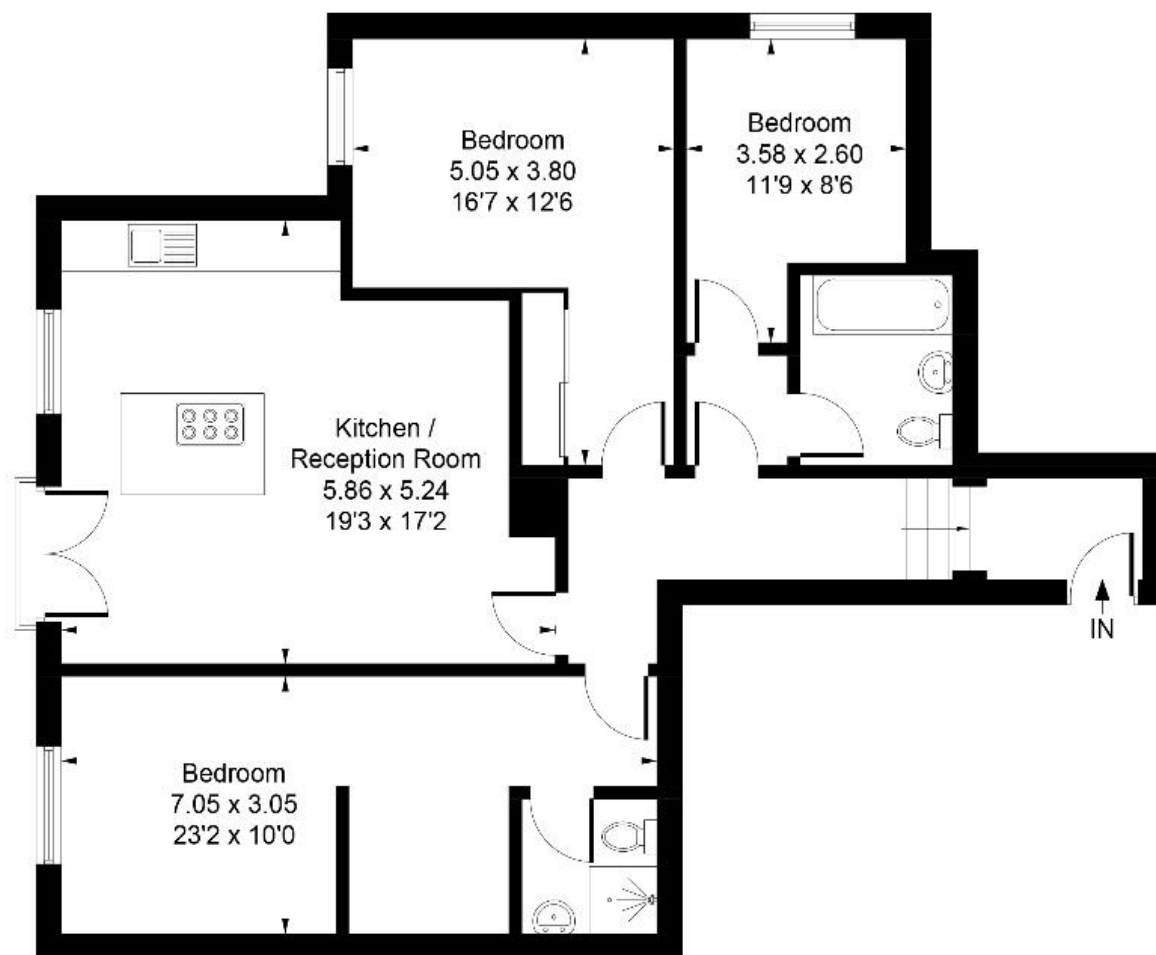
EPC RATING: B



www.sintonandrews.com
020 8566 1990

Eaton Rise, Ealing, W5 2HA

Approximate Gross Internal Area
91.30 sq m / 983 sq ft



Ground Floor

Whilst every attempt has been made to ensure the accuracy of the floor plan contained here, measurements of doors, windows, rooms and any other items are approximate and no responsibility is taken for any error, omission, or mis-statement. This plan is for illustrative purposes only and should be used as such by any prospective purchase.

Produced by jcphotographystudio.com

020 8566 1990

8 Spring Bridge Road, Ealing, London W5 2AA

SINTONANDREWS.COM

