



£1,450,000 Freehold

WOODVILLE GARDENS, EALING, W5 2LQ





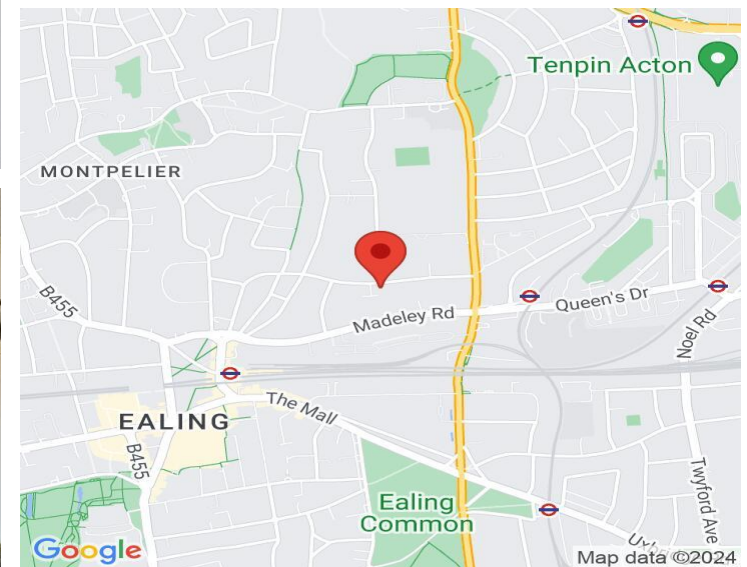
**A DECEPTIVELY SPACIOUS FIVE-BEDROOM, THREE-BATHROOM TOWN HOUSE IN THIS WONDERFUL LOCATION CLOSE TO EALING CRICKET GROUND.**

Woodville Gardens is very peacefully, yet conveniently placed close to Haven Green and Ealing Broadway with its Town Centre and new Elizabeth (Crossrail Line) Station, alongside District, Central and Main Line services and will placed for Ada Lovelace school catchment area.

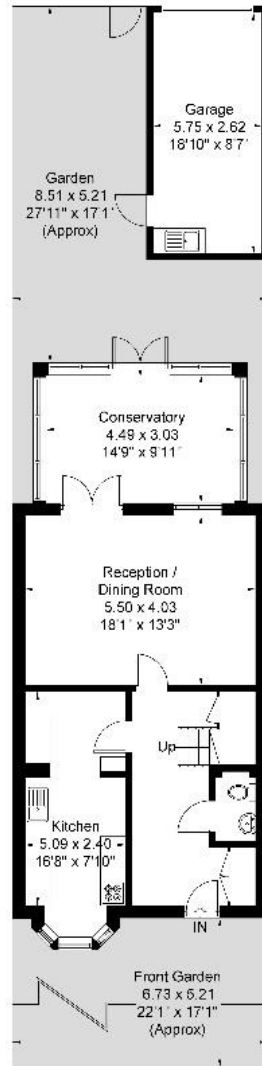
This really good size town house comes with adaptable accommodation arranged over three floors with spacious living room / conservatory. Fitted kitchen. Downstairs cloakroom. Five bedrooms (two with en suite showers, including massage shower unit). Part air conditioning. Gas fired central heating and double glazing. South facing garden. Large garage. Off street parking and no forward chain.

**COUNCIL TAX BAND: G**

**EPC Rating: D**



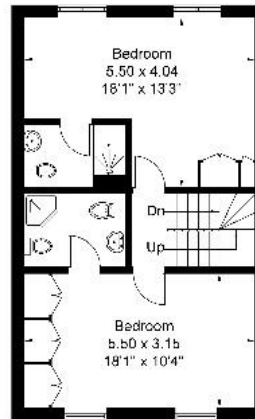
[www.sintonandrews.com](http://www.sintonandrews.com)  
020 8566 1990



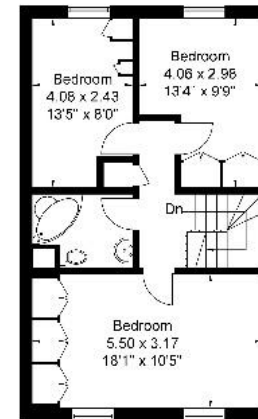
**Ground Floor**  
 67.2 sq m / 723 sq ft  
**Garage**  
 14.6 sq m / 157 sq ft

# Woodville Gardens

Approximate Gross Internal Area = 169.4 sq m / 1823 sq ft  
 Garage = 14.6 sq m / 157 sq ft  
 Total = 184.0 sq m / 1980 sq ft



**First Floor**  
 51.1 sq m / 550 sq ft



**Second Floor**  
 51.1 sq m / 550 sq ft

Although every attempt has been made to ensure accuracy, all measurements are approximate.  
 The floorplan is for illustrative purposes only and not to scale.  
 © www.perspective.co.uk

020 8566 1990

8 Spring Bridge Road, Ealing, London W5 2AA

SINTONANDREWS.COM

