



£825,000 Freehold
MOUNTFIELD ROAD, EALING, W5 2NG





A VERY CHARMING AND CONVENIENTLY LOCATED 3 BEDROOM VICTORIAN COTTAGE WITH THE ADDED BONUS OF OFF STREET PARKING.

Mountfield Road is peacefully yet conveniently located just off Haven Green being less than five minutes' walk from Ealing Broadway station with it's new Elizabeth Line, and the town Centre.

This delightful period cottage comes with a spacious living / dining room, a modern fitted kitchen and bathroom plus a first-floor cloakroom, 3 bedrooms, boarded loft room with further potential to extend, pretty rear garden with office / store room, gas central heating, double glazing and off-street parking.

COUNCIL TAX BAND: E

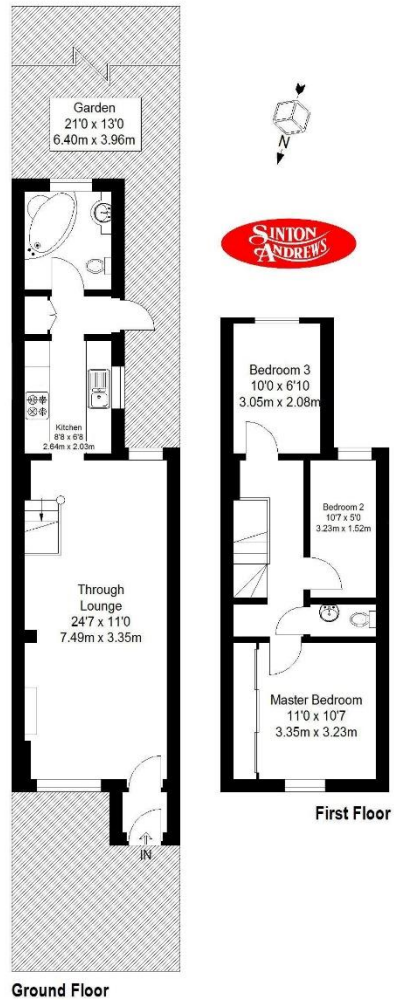
EPC Rating: D



www.sintonandrews.com
020 8566 1990

25 Mountfield Road Ealing W5 2NG

Approximate Gross Internal Area
Ground Floor = 427 sq ft / 39.7 sq m
First Floor = 341 sq ft / 31.7 sq m
Total = 768 sq ft / 71.4 sq m



Cube Property Marketing © 2018
Illustration for identification purposes only,
measurements are approximate, not to scale.

020 8566 1990

8 Spring Bridge Road, Ealing, London W5 2AA

SINTONANDREWS.COM

