



PUTTERILLS

est. 1992

4 Oak Tree Gardens, Knebworth, SG3 6EQ
Price £700,000

Attractive 2016-built 4 bedroom detached village home

This modern and extremely well fitted detached 4 bedroom family house forms part of an exclusive development of just thirteen properties that were constructed in 2016 by the reputable Matthew Homes (NHBC certificate valid until 2026). Approached via a deep central entrance hall with staircase, the tastefully presented accommodation comprises: lounge, dining room/ playroom, spacious fitted kitchen/breakfast room with adjoining utility room, and cloakroom. To the first floor there are four bright double bedrooms, one with en-suite shower room, and a family bathroom with modern white suite. The rear garden has been recently landscaped and boasts a deep patio, steps up to an attractive sun deck, tiered lawns and attractive planting. There is a timber shed and personal door to the attached double length garage that has light, power and overhead storage. To the front there are two parking spaces and the cul-de-sac offers further visitor parking spaces.

EER: B

Knebworth High Street has shops that cater for daily needs to include a chemist, post office, doctors' surgery, two dentists, Co-op general store, Indian restaurant, Chinese take away, two cafés, wine merchants, independent butcher & a well-regarded junior/mixed infant school. There are C of E & RC churches, Golf club & recreation ground with tennis courts & bowling green. The village is well placed for access to neighbouring towns and commuter links, with the following distances for guidance only: Stansted airport 28 miles Luton airport 13 miles Heathrow airport 39 miles - Welwyn Garden City 6 miles A1(m) 3.6 miles Hertford 8.5 miles St Albans 13 miles M25 Jct 23 14 miles.



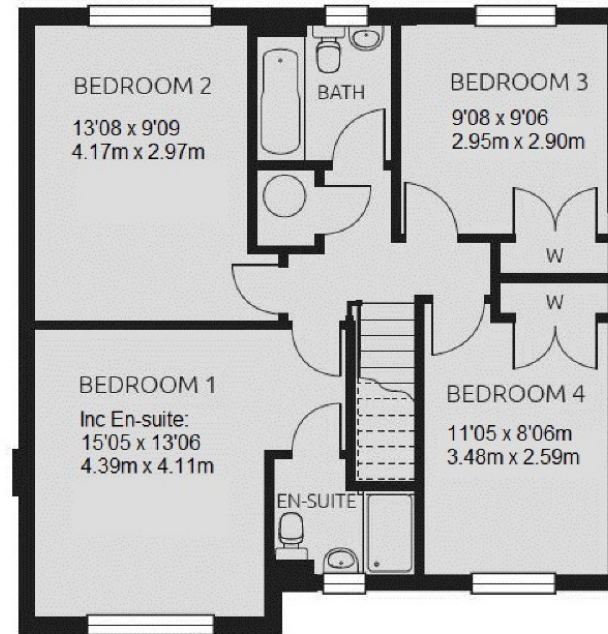
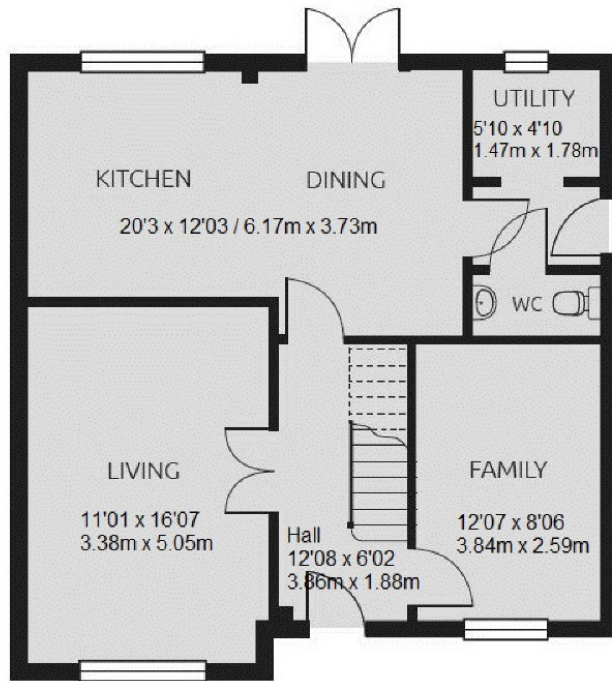












PUTTERILLS

est. 1992

putterills.co.uk | 01438 817007 | kneb@putterills.co.uk

All measurements are approximate and for general guidance only and whilst every attempt has been made to ensure accuracy, they must not be relied on or form any part of a legal contract. The fixtures, fittings and appliances referred to have not been tested and therefore no guarantee can be given and that they are in working order. Internal photographs are reproduced for general information and it must not be inferred that any item shown is included with the property. Prior to a sale being agreed, prospective purchasers will be required to produce identification documents. Your co-operation with this, in order to comply with Money Laundering regulations, will be appreciated and assist with the smooth progression of the sale.