



PUTTERILLS

EST. 1992

4 Gipsy Lane, Knebworth, SG3 6PL
Price £775,000

5 bedroom, 2 reception room character village home with generous garden

This thoughtfully enlarged 5 bedroom character family house is believed to date back to circa 1905 and is situated in a leafy village turning of just seven individual properties. Constructed originally as a farm worker's cottage for the Knebworth Park Estate, the house enjoys red brick elevations, double glazed windows and spacious accommodation that is approached via a fine central hall with original front door. The accommodation comprises: dual aspect living room, family room, kitchen/ dining room, utility room and WC. To the first floor there are five bedrooms one of which is currently being used as a study. Two of the bedrooms have en-suite facilities and there is a family bathroom. The pretty and mature cottage style rear garden offers a timber deck, beautifully planted beds and lawned area. This property is being offered CHAIN FREE. Energy rating: D

Knebworth High Street has shops that cater for daily needs to include a chemist, post office, doctors' surgery, two dentists, Co-op general store, Indian restaurant, Chinese take away, two cafés, wine merchants, independent butcher & a well-regarded junior/mixed infant school. There are C of E & RC churches, Golf club & recreation ground with tennis courts & bowling green. The village is well placed for access to neighbouring towns and commuter links, with the following distances for guidance only: Stansted airport 28 miles Luton airport 13 miles Heathrow airport 39 miles - Welwyn Garden City 6 miles A1(m) 3.6 miles Hertford 8.5 miles St Albans 13 miles M25 Jct 23 14 miles. .



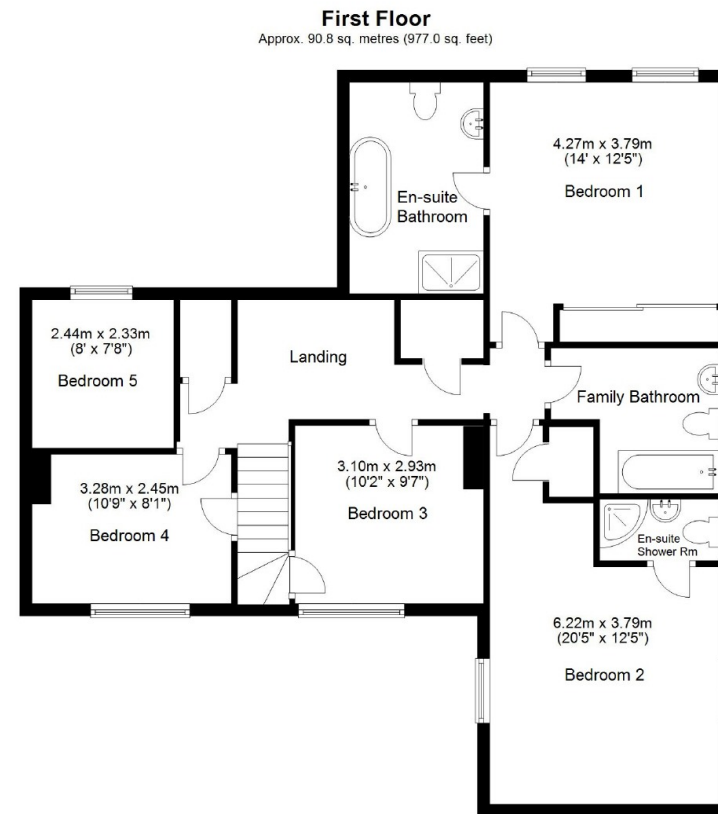












Total area: approx. 185.9 sq. metres (2001.3 sq. feet)