



PUTTERILLS

est. 1992

Hazelton, 133 Hertford Road, Bragbury End, SG2 8ST

Price £850,000

Individual detached character residence with self contained annexe.

Recently refurbished this extremely individual and deceptively spacious 3/4 bedroom detached chalet style house has fine double fronted elevations and an established plot of approx 0.213 of an acre. Offered as a chain free sale, the property boasts accommodation amounting to approx 2415 sq ft and includes a DETACHED SELF CONTAINED ANNEXE. Approached via a deep central reception hall with part gallery above, the accommodation comprises: Dual aspect sitting room with fireplace, recently fitted kitchen with adjoining breakfast area, separate utility room, family room, dining room/bedroom 4, ground floor bathroom, and 3 first floor double bedrooms approached via a feature central landing with additional shower room. The garage has been converted to a fully functioning annexe with kitchen, bathroom and living area. CHAIN FREE.

The mature and private rear garden of approx 100' has a patio with steps leading down to a deep lawn with established side shrubs. Electronic gates lead to the private driveway with parking for around 4 cars. Energy Rating: E

Bragbury End is situated at the southern end of Stevenage and is conveniently placed for Knebworth with shops that cater for daily needs including a chemist, post office, library, doctors' surgery, 2 dentists, Cooperative general store, well regarded junior/mixed infant school, churches and a recreational ground with tennis courts, bowling green and children's play area. There is also a private Golf Club with gymnasium and pool facilities. Stevenage town provides extensive schooling, shopping and leisure facilities and a mainline station serving London Kings Cross. In addition Hitchin, Welwyn G City, St Albans and the County Town of Hertford are within easy driving distance.



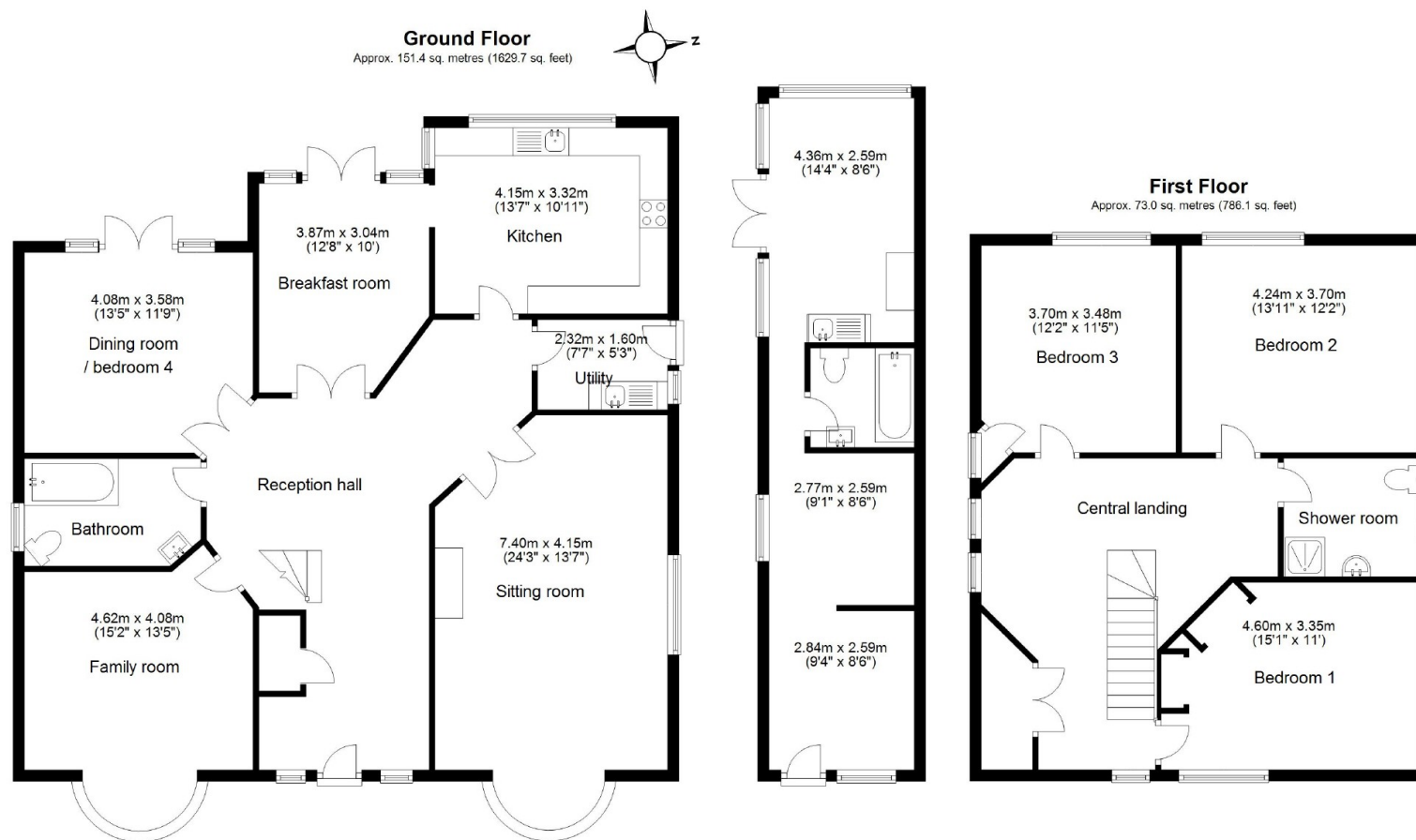












Total area: approx. 224.4 sq. metres (2415.8 sq. feet)