



## Dartmouth Road, NW2

Freehold - £1,900,000

FOR SALE is this six bedroom semi-detached house with a gated driveway for two/three cars, offering 3,113 sq ft over three floors. Situated on a sought-after road within the coveted Mapesbury Conservation Area, the house offers an exciting opportunity to acquire a sizeable family home in a superb location.

The Ground Floor comprises three reception rooms and an expansive kitchen/dining space. The 77ft rear garden is particularly noteworthy with six mature trees, ensuring complete seclusion from the neighbouring house. The First and Second floor offer six bedrooms, two shower rooms and a kitchenette. The principal bedroom is situated at the rear of the First Floor and boasts a balcony with wonderful views over the garden.

Dartmouth Road is a wide, tree-lined residential road close to the varied amenities of Kilburn and West Hampstead. Local transport links include Kilburn (Jubilee - Zone 2) and Brondesbury (Overground - Zone 2).

- 6 bedroom semi-detached house offering 3,113 sq ft
- 77 ft south-facing garden with decking
- Gated driveway with parking for 2/3 cars
- COUNCIL: Brent (G)

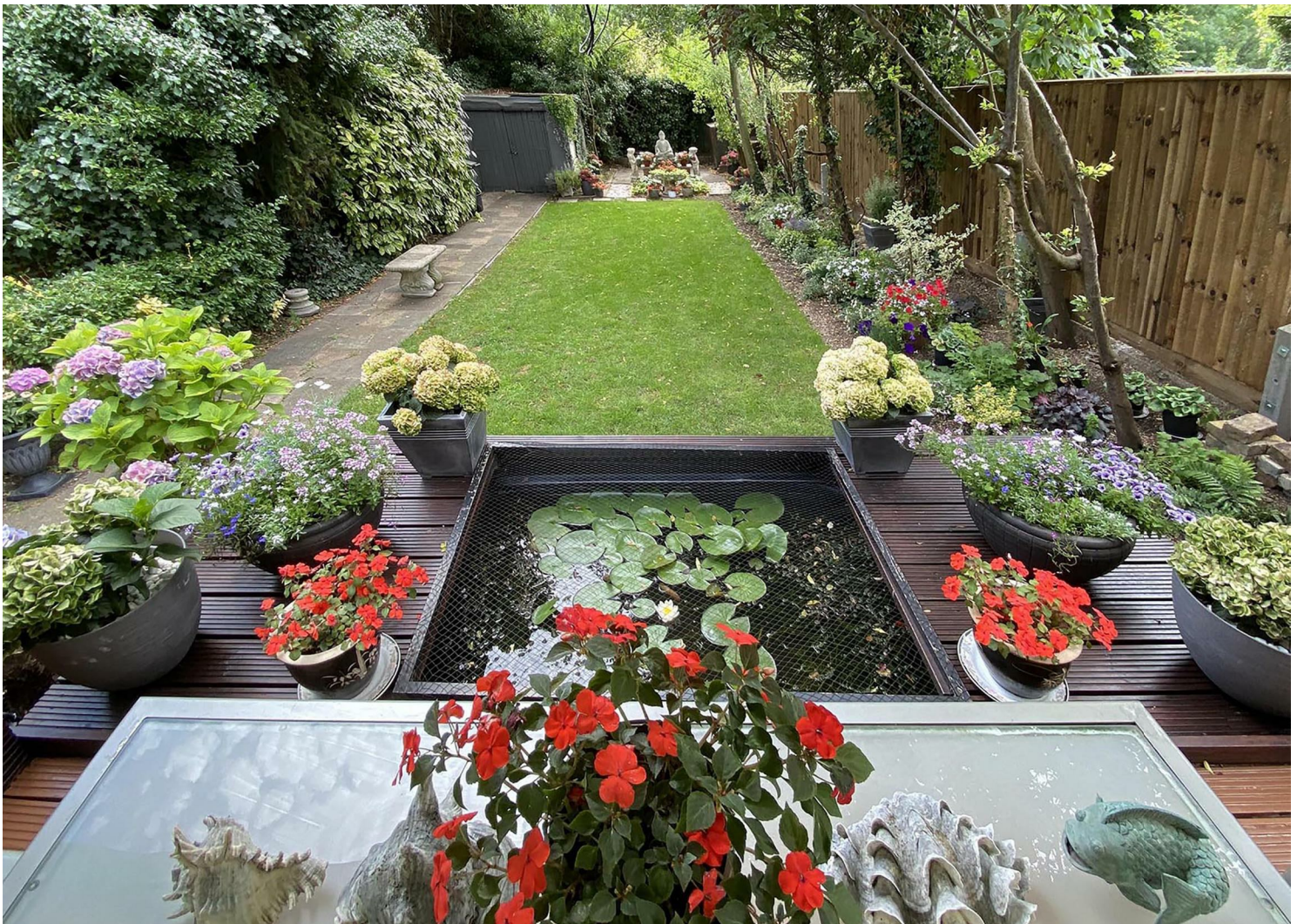
020 8459 1133

[enquiries@cameronsstiff.co.uk](mailto:enquiries@cameronsstiff.co.uk)

[cameronsstiff.co.uk](http://cameronsstiff.co.uk)







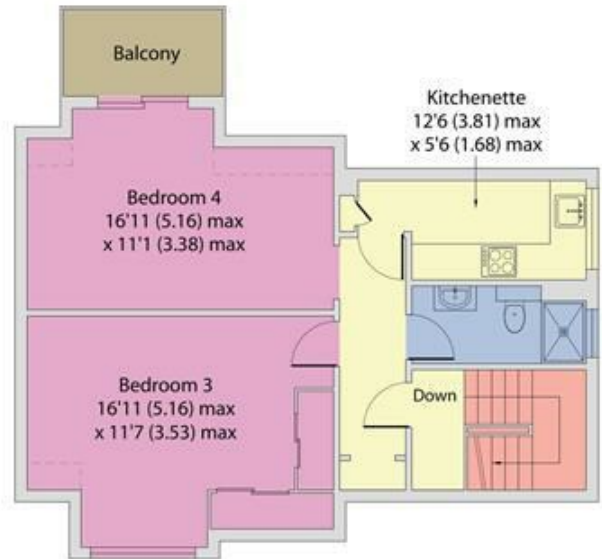
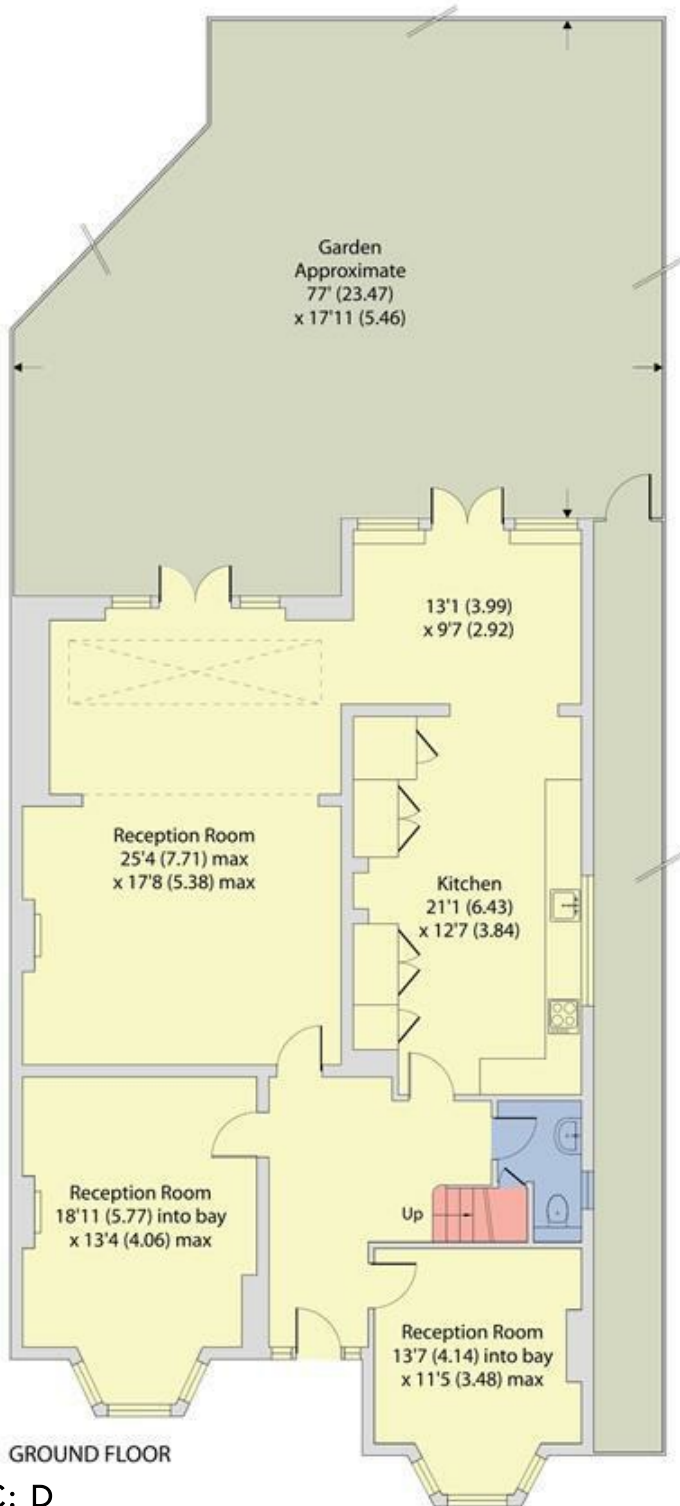
## Dartmouth Road, London, NW2

Approximate Area = 3113 sq ft / 289 sq m

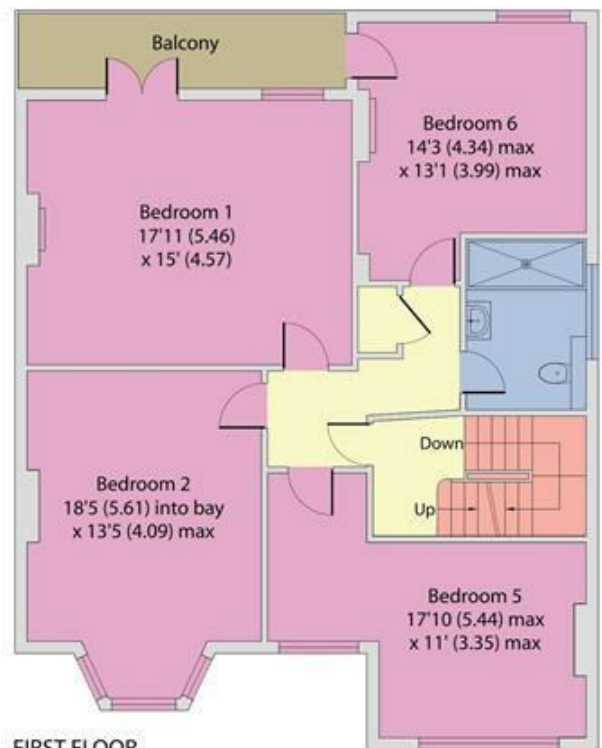
For identification only - Not to scale



Denotes restricted head height



SECOND FLOOR



FIRST FLOOR

EPC: D

Ref: 15070532



Floor plan produced in accordance with RICS Property Measurement Standards incorporating International Property Measurement Standards (IPMS2 Residential). © nichecom 2024. Produced for Camerons Stiff & Co. REF: 1124260

