

CAMERONS STIFF & Co.

Inc. QUEENS PARK PARTNERSHIP



Donnington Road, NW10

New to the market is this three bedroom semi-detached house built circa 1927, providing 1300 sq ft of fine lateral space and situated between Willesden Green and Kensal Rise. The house is abundant in period charm with working fireplaces, ornate corning and a beautiful tiled hallway.

Arranged over two floors, the property boasts three bedrooms and a family bathroom. The ground floor comprises a separate bright reception room, an elegantly presented dining room and 24 ft kitchen both with access to the 98 ft mature rear garden.

Within easy walking distance of Nuffield Fitness Gym, South Hampstead Cricket, Tennis Club and Willesden Green (Jubilee Line Zone 2) & Kensal Rise (Overground).

- Semi-detached period property c.1927
- Spanning over 1300 sq ft.
- 3 bedrooms, 1 family bathroom
- Period features throughout
- Spacious reception with working fireplace
- Separate dining area
- 24ft fully fitted kitchen
- Off street parking
- Close to an excellent Italian/Café Delicatessen & the Art house Cinema 'The Lexi'
- Excellent transport links

£899,950 Freehold

www.cameronsstiff.co.uk

CAMERONS STIFF & Co.

Inc. QUEENS PARK PARTNERSHIP



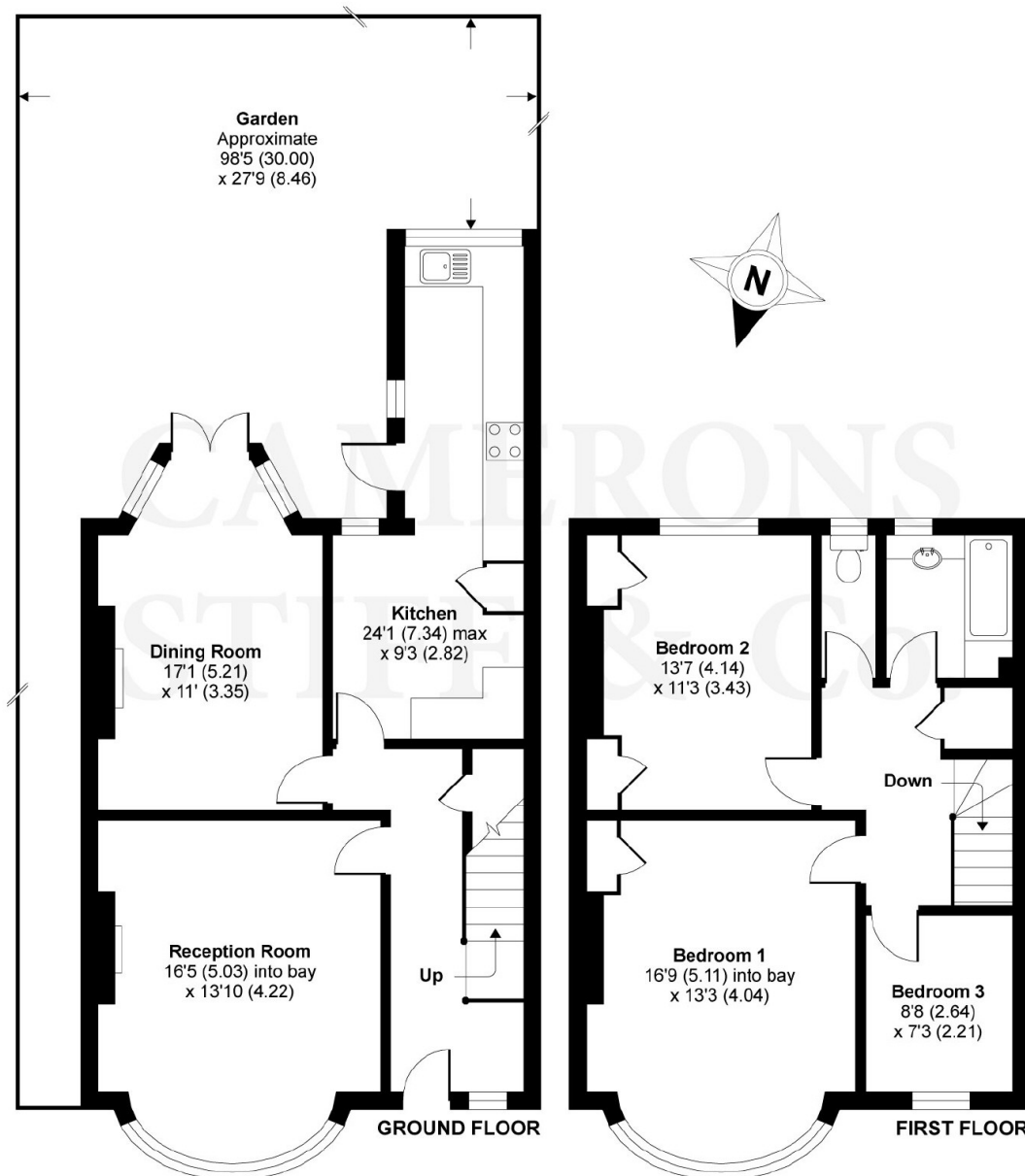
www.cameronsstiff.co.uk

You may download, store and use the material for your own personal use and research. You may not republish, retransmit, redistribute or otherwise make the material available to any party or make the same available on any website, online service or bulletin board of your own or of any other party or make the same available in hard copy or in any other media without the website owner's express prior written consent. The website owner's copyright must remain on all reproductions of material taken from this website.

Energy Efficiency Rating		Current	Potential
102-100	A		
92-101	B		
82-91	C		80
72-81	D		
62-71	E	49	
52-61	F		
42-51	G		
Not energy efficient - higher running costs			
England & Wales		EU Directive 2002/91/EC	

Donnington Road, London, NW10

APPROX. GROSS INTERNAL FLOOR AREA 1299 SQ FT 120.7 SQ METRES



Whilst every attempt has been made to ensure the accuracy of the floor plan contained here, measurements of doors, windows and rooms are approximate and no responsibility is taken for any error, omission or misstatement. These plans are for representation purposes only as defined by RICS Code of Measuring Practice and should be used as such by any prospective purchaser. Specifically no guarantee is given on the total square footage of the property if quoted on this plan. Any figure given is for initial guidance only and should not be relied on as a basis of valuation.

Copyright nichecom.co.uk 2019 Produced for Camerons Stiff & Co REF : 464248

www.cameronsstiff.co.uk

275 Willesden Lane, London NW2 5JA T: 020 8459 1133 E: enquiries@cameronsstiff.co.uk

62 Salusbury Road, London, NW6 6NS T: 020 7328 2828