



Willesden Lane, NW6

Share of Freehold - £750,000

AMAZING spacious en-suite two double bedroom luxury penthouse apartment boasting 1,282 sq ft of internal space and stretching across the entire top floor of this modern purpose built development. This prestigious apartment features private lift access that opens directly into the internal hallway and comprises a large elegant reception room with lounge and dining areas, a large high spec. fully fitted kitchen with breakfast peninsular, two double bedrooms both with ensuite bathrooms, a guest WC, and a utility room with a washing machine and central heating boiler. The immaculate kitchen incorporates Miele appliances including fully fitted oven, microwave combination oven, coffee machine, fridge/freezer and dishwasher, and a Wolf hob and pop up extractor fan unit. Further benefits include walnut hardwood flooring throughout, access to a large boarded loft, a private off street allocated parking space, communal gardens and a Share of Freehold.

Newhaven Court is located moments away from the popular Queens Park which offers a vast selection of bars, delis, cafes, restaurants, weekly farmers market and boutique shops. Queens Park and Gladstone Park are within easy walking distance, and Hampstead Heath and Regent's Park are a short journey away.

020 8459 1133

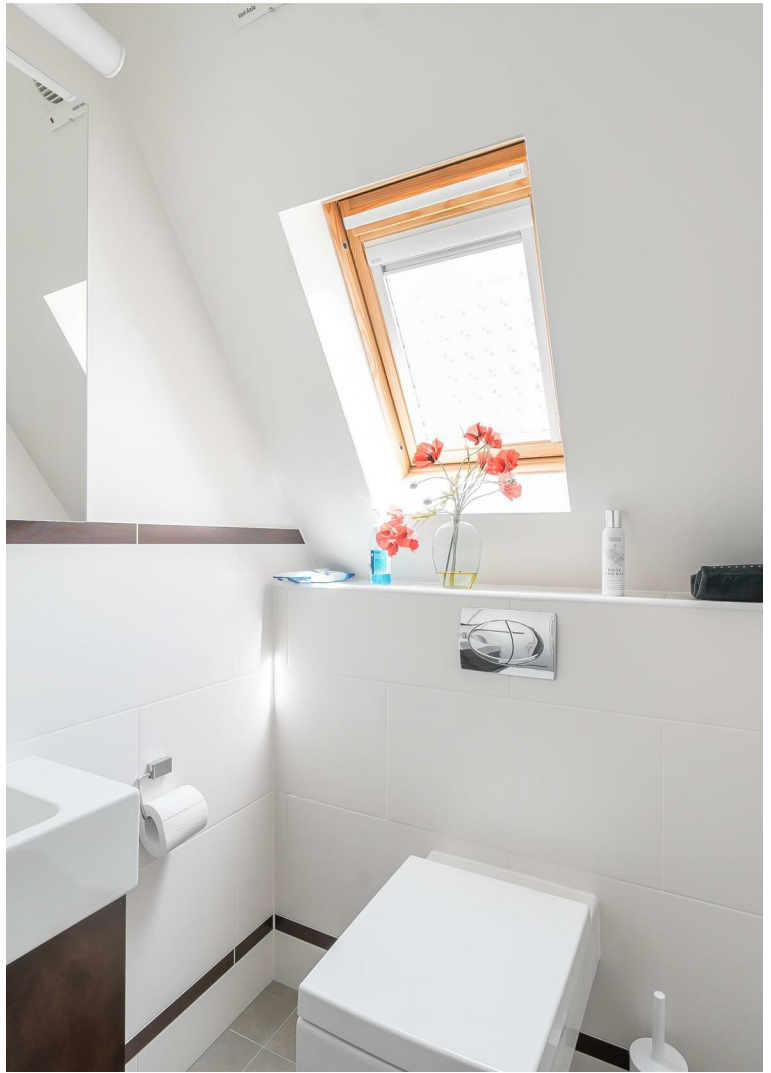
[enquiries@cameronsstiff.co.uk](mailto:enquiries@cameronsstiff.co.uk)

[cameronsstiff.co.uk](http://cameronsstiff.co.uk)











## Newhaven Court, 189 Willesden Lane, London, NW6



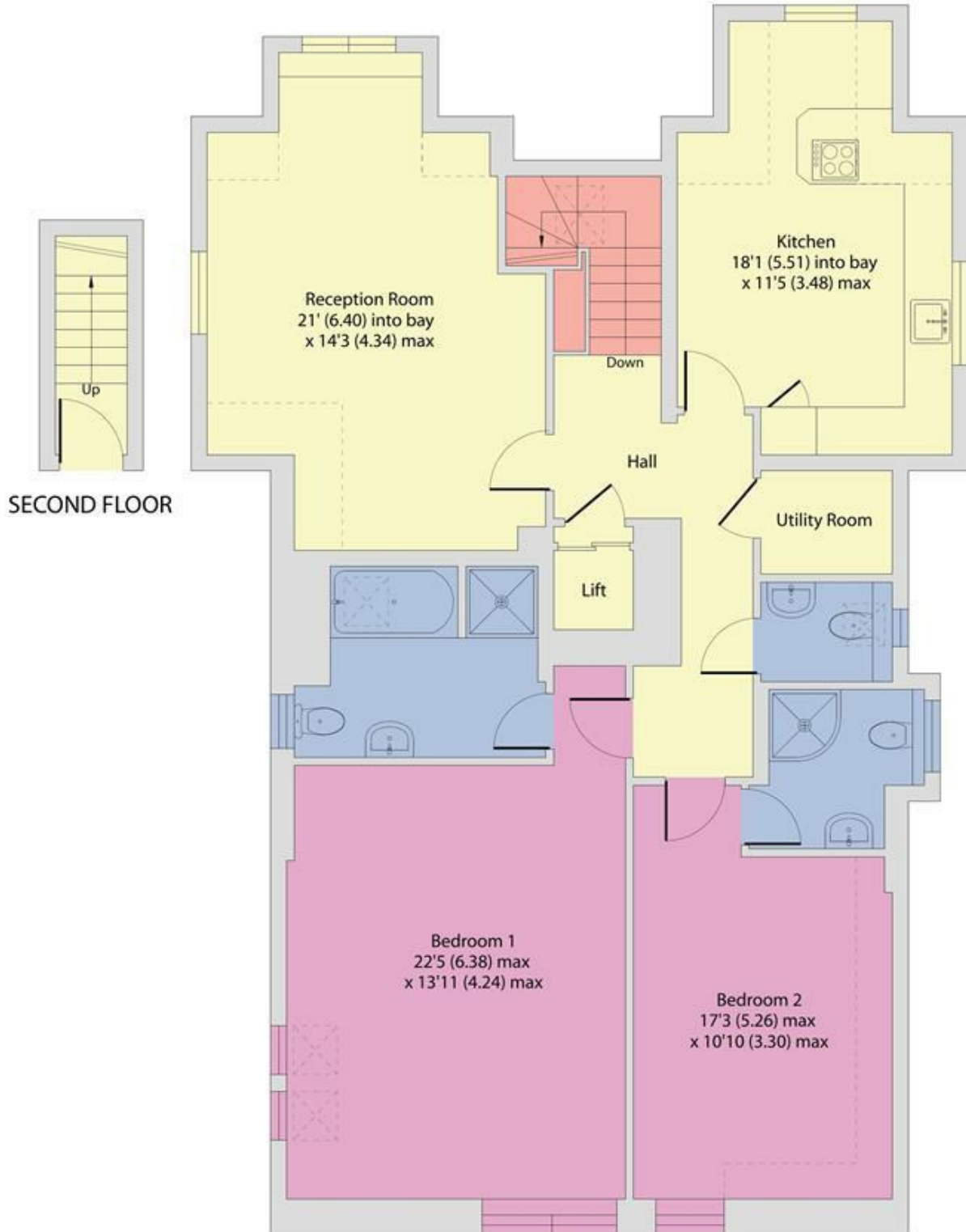
Denotes restricted head height

Approximate Area = 1187 sq ft / 110.2 sq m

Limited Use Area(s) = 95 sq ft / 8.8 sq m

Total = 1282 sq ft / 119 sq m

For identification only - Not to scale



### THIRD FLOOR

EPC: C

Ref: 18936545



Floor plan produced in accordance with RICS Property Measurement Standards incorporating International Property Measurement Standards (IPMS2 Residential). © nichecom 2024. Produced for Camerons Stiff & Co. REF: 1141396

