



St Gabriels Road, NW2

Share of Freehold - £350,000

We are delighted to present this beautifully refurbished one-bedroom flat For Sale. Situated on the Second Floor of a charming period building, this property offers 570 sq ft of stylish living space in the sought-after Mapesbury Conservation Area.

Refurbished within the past two years, the flat boasts a spacious open-plan kitchen/reception room with a sleek, contemporary design, integrated appliances, and an inviting breakfast bar. The modern shower room and double bedroom provide comfort and convenience, with the latter offering access to a generous storage area. Additional benefits include a newly extended lease and eaves storage access.

Positioned on St. Gabriel's Road, a peaceful tree-lined street, the flat is ideally located near Walm Lane's amenities and within easy reach of both Willesden Green (Jubilee Line - Zone 2) and Kilburn (Jubilee Line - Zone 2), ensuring excellent transport connections.

- Refurbished 1 bedroom flat
- 570 sq ft of accommodation
- Set in the Mapesbury Conservation Area
- Council: Brent (B)

020 8459 1133

enquiries@cameronsstiff.co.uk

cameronsstiff.co.uk





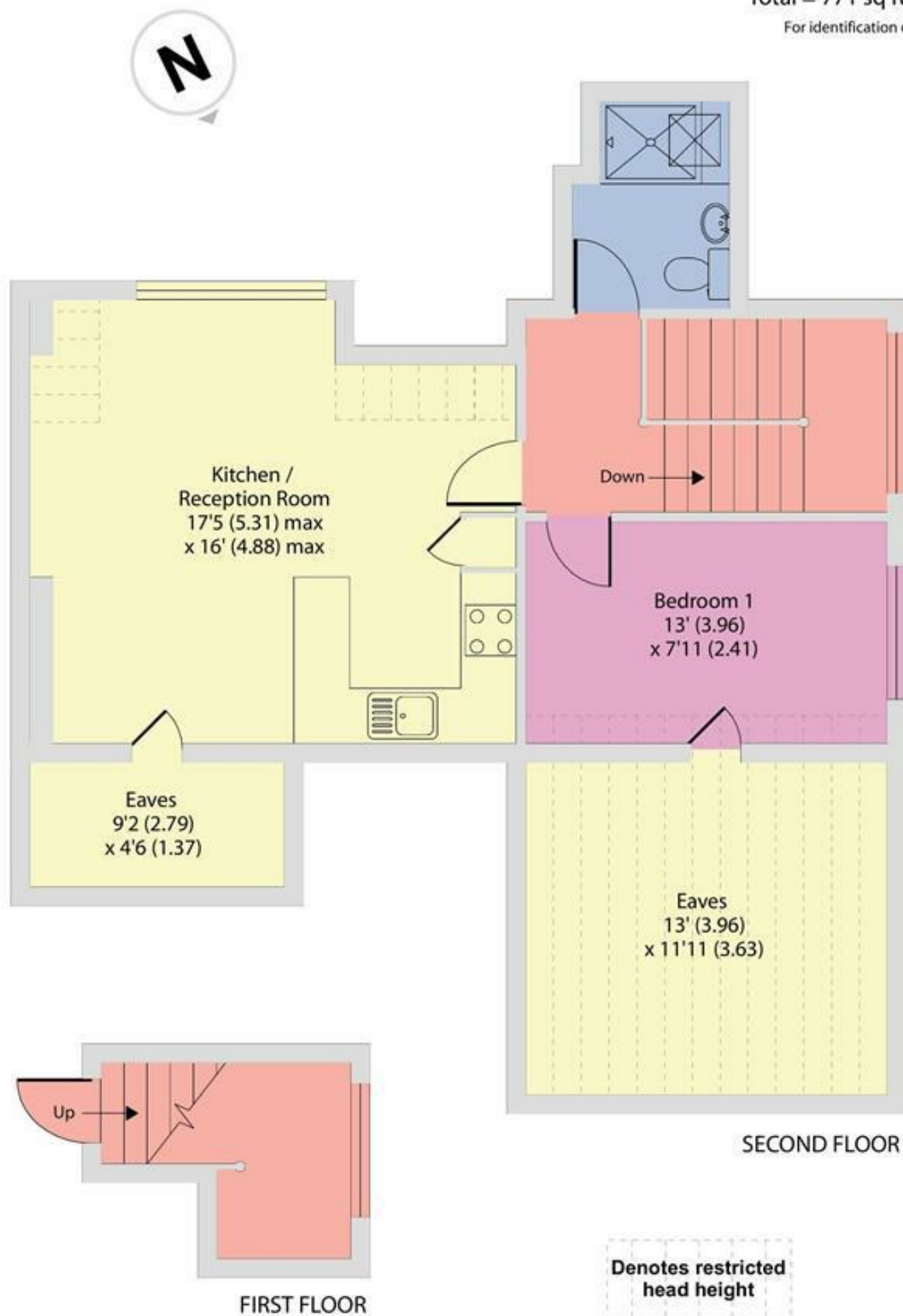
St. Gabriels Road, London, NW2

Approximate Area = 570 sq ft / 52.9 sq m

Limited Use Area(s) = 201 sq ft / 18.6 sq m

Total = 771 sq ft / 71.6 sq m

For identification only - Not to scale



EPC: D

Ref: 15172910



Floor plan produced in accordance with RICS Property Measurement 2nd Edition, Incorporating International Property Measurement Standards (IPMS2 Residential). © nitchecom 2025. Produced for Camerons Stiff & Co. REF: 596484

