



Blenheim Gardens, NW2

Freehold - £1,699,950

FOR SALE & CHAIN FREE – A rare opportunity to acquire a late Victorian five bedroom family home, offering 2,499 sq ft over three floors, situated in an enviable position in Willesden Green.

The Ground Floor features three reception rooms, a small kitchen, and a shower room. The First Floor offers three spacious bedrooms, all with en-suites, plus an additional bathroom. The Second Floor includes two double bedrooms, a large bathroom, and a study. Externally, an exceptional garden stretching nearly 200 ft. This property requires refurbishment, making it ideal for buyers seeking a blank canvas to extend and design their dream home, with potential to expand beyond 3,000 sq ft.

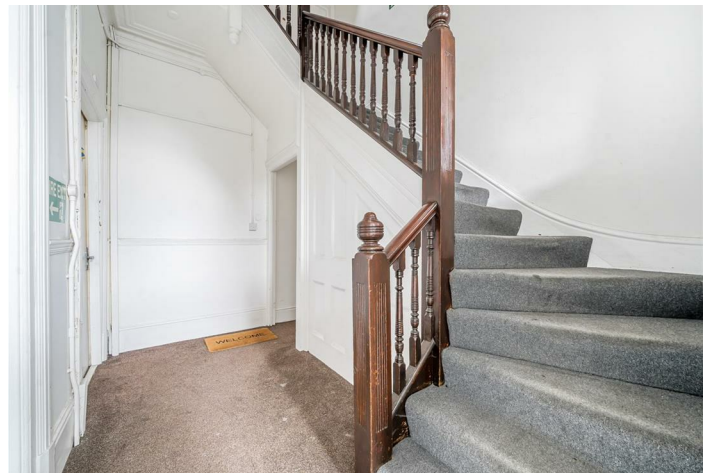
Blenheim Gardens is a short walk to Walm Lane's delis, bars, and restaurants, with 86-acre Gladstone Park nearby. Excellent transport links via Willesden Green Station (Jubilee Line - Zone 2) provide easy access to Central London.

- Offered CHAIN FREE - Ideal renovation project
- 5 bedroom home, offering 2,499 sq ft
- Council: Brent (E)

020 8459 1133

enquiries@cameronsstiff.co.uk

cameronsstiff.co.uk







Blenheim Gardens, London, NW2

Approximate Area = 2499 sq ft / 232.1 sq m

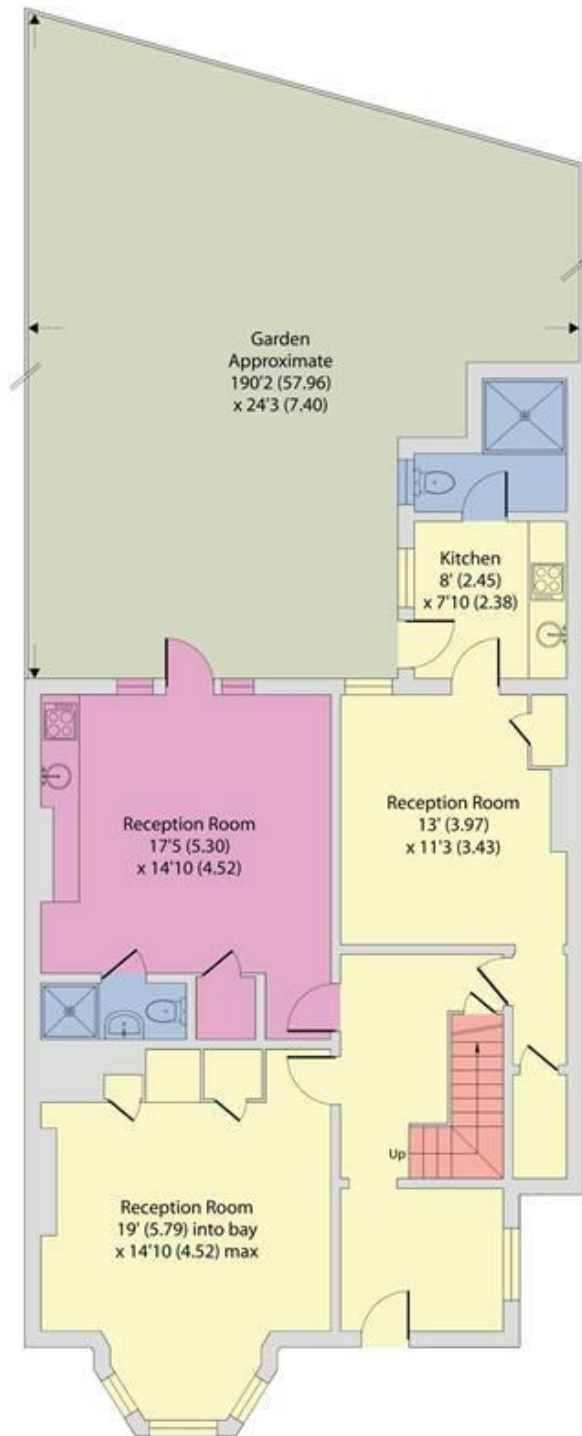
Limited Use Area(s) = 93 sq ft / 8.6 sq m

Total = 2592 sq ft / 240.7 sq m

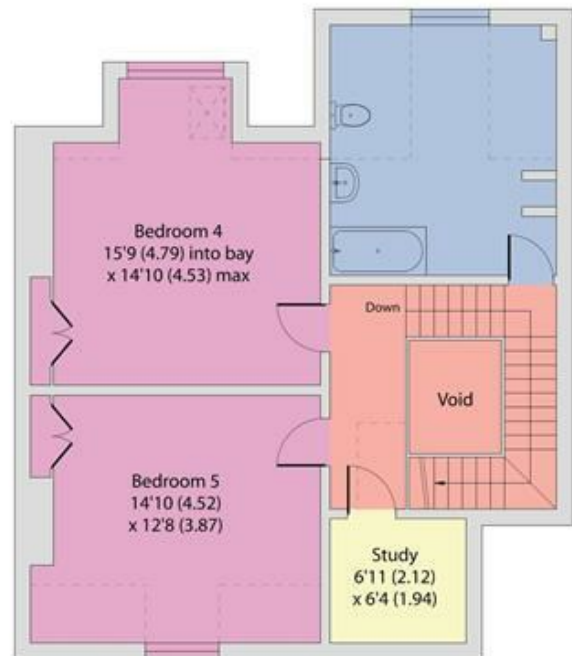
For identification only - Not to scale



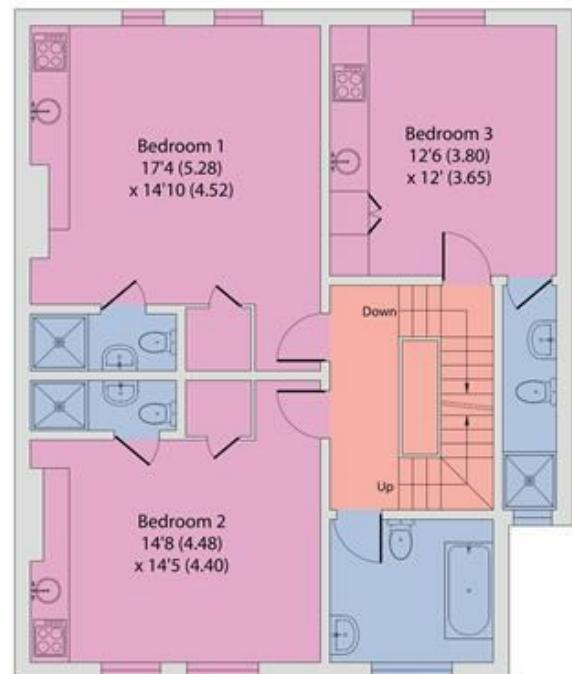
Denotes restricted head height



GROUND FLOOR



SECOND FLOOR



FIRST FLOOR

EPC: E
Ref: 18883571



Floor plan produced in accordance with RICS Property Measurement 2nd Edition, Incorporating International Property Measurement Standards (IPMS2 Residential). Produced for Camerons Stiff & Co. REF: 1251979. © nichecom 2025.

