



## Willesden Lane, NW6

### Leasehold - Share of Freehold - £475,000

OFFERED FOR SALE CHAIN FREE is this Third Floor, two bed purpose built flat within this well-regarded Mansion block, offering 739 sq ft of accommodation called Tarranbrae.

The property boasts a spacious living room with a charming fireplace and abundant natural light, a modern kitchen with integrated appliances and ample storage, a principal double bedroom with built-in wardrobes, and a generously sized second bedroom, all serviced by a tiled family bathroom. Residents enjoy an on-site caretaker, communal gardens, garage and OSP.

Located near West Hampstead, Kilburn, Queen's Park and its excellent eateries, pubs, and delis. Queen's Park is just a short stroll away. Kilburn (Jubilee - Zone 2) and Brondesbury Park (Overground - Zone 2) providing easy access to London.

- Offered CHAIN FREE - 2 bed flat of 739 sq ft
- Well maintained Mansion Block
- On-site caretaker, garage & communal gardens
- COUNCIL: Brent (D)

020 8459 1133

[enquiries@cameronsstiff.co.uk](mailto:enquiries@cameronsstiff.co.uk)

[cameronsstiff.co.uk](http://cameronsstiff.co.uk)



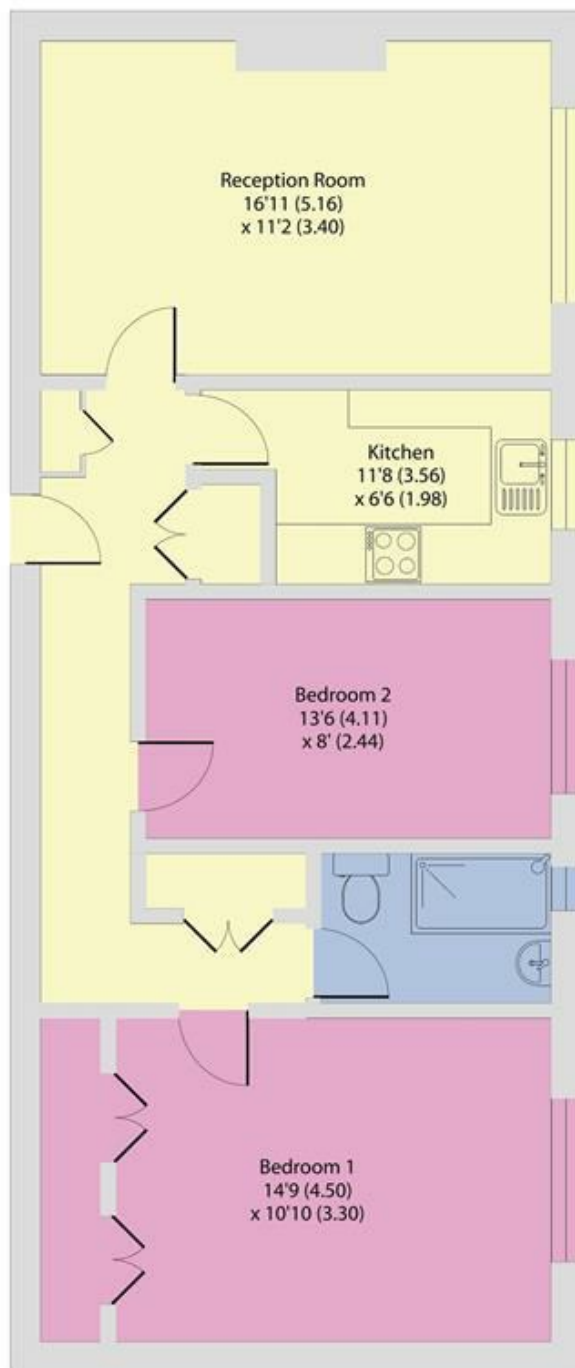




Willesden Lane, London, NW6

Approximate Area = 739 sq ft / 68.7 sq m

For identification only - Not to scale



THIRD FLOOR

EPC: C  
Ref: 18780341



Floor plan produced in accordance with RICS Property Measurement 2nd Edition, Incorporating International Property Measurement Standards (IPMS2 Residential). © nitchecom 2025. Produced for Camerons Stiff & Co. REF: 1242163

