



## Pine Road, NW2

### Freehold - £789,000

FOR SALE is this charming four bedroom Period terraced house offering 1,425 sq ft of accommodation set in the heart of Cricklewood. The property is offered with vacant possession and there is potential to extend at the side and into the loft (SSTP).

The Ground Floor offers a bright bay fronted reception room, a dining room, large kitchen/diner with access to the 35 ft west-facing private rear garden, a second double bedroom, a guest WC and a shower room. The Top Floor comprises three large bedrooms, including the bay fronted bedroom, which are serviced by a family bathroom.

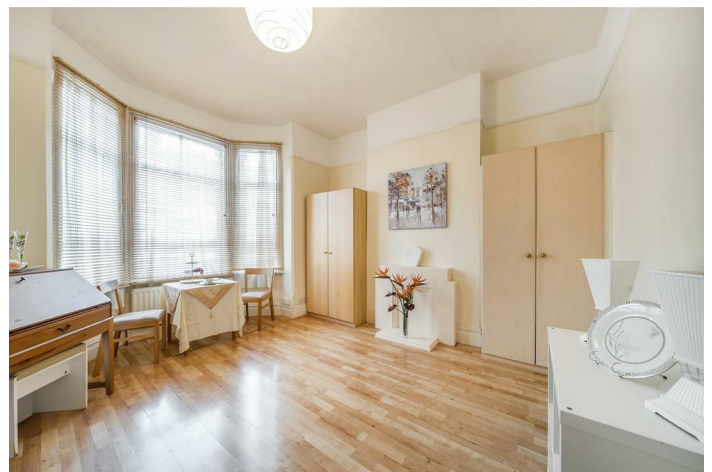
Pine Road is moments away from Cricklewood Broadway and Willesden Green. The area offers an excellent array of local bars, restaurants and the green open spaces of the award winning 86-acre Gladstone Park.

- Charming 4 bedroom Period terraced house
- Offering 1,425 sq ft of accommodation
- 35 ft west-facing private rear garden
- Willesden Green (Jubilee - Zone 2) & Cricklewood Thameslink
- Viewing highly recommended
- COUNCIL: Brent (E)

020 8459 1133

[enquiries@cameronsstiff.co.uk](mailto:enquiries@cameronsstiff.co.uk)

[cameronsstiff.co.uk](http://cameronsstiff.co.uk)







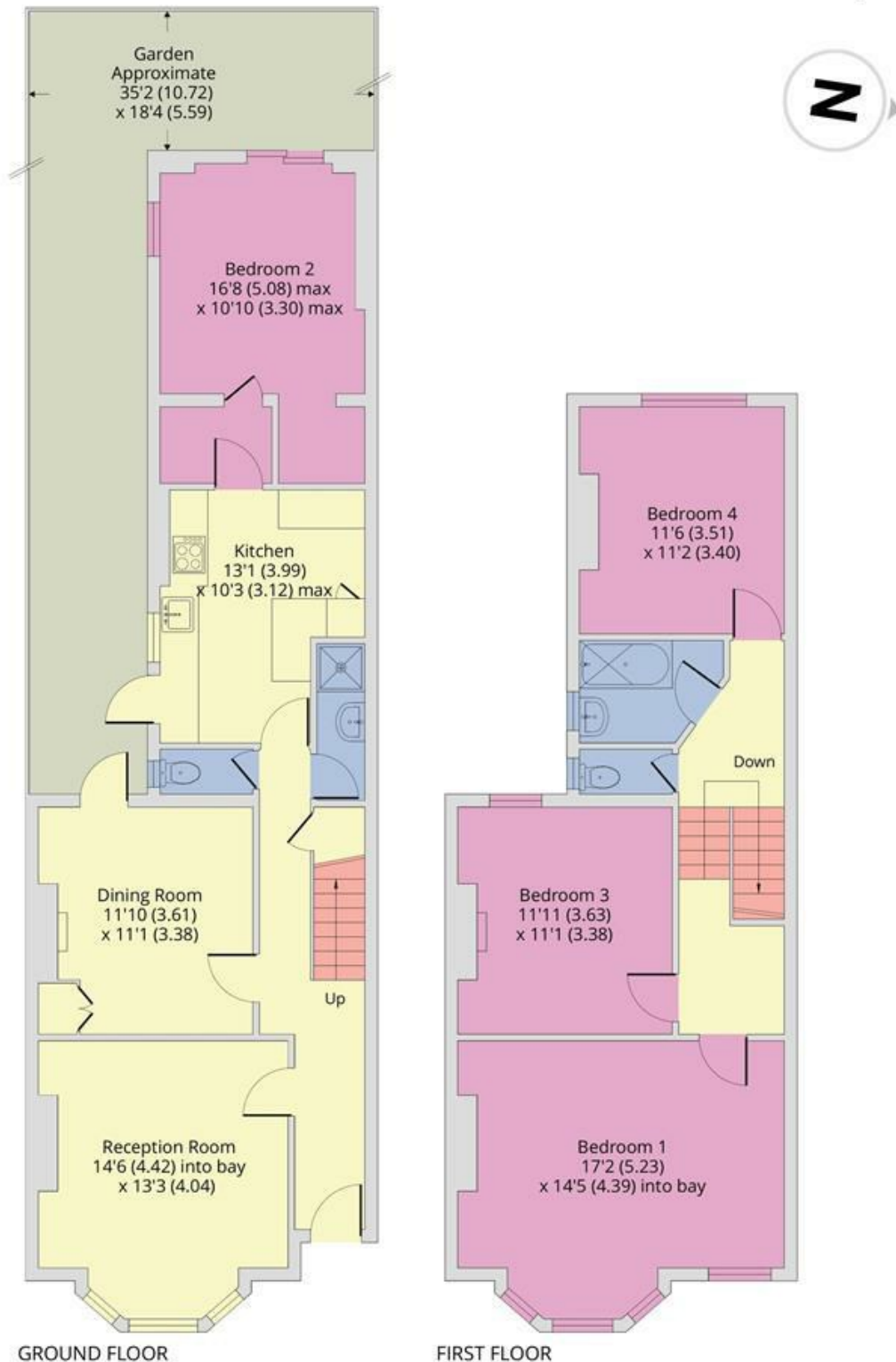




Pine Road, London, NW2

Approximate Area = 1425 sq ft / 132.3 sq m

For identification only - Not to scale



Floor plan produced in accordance with RICS Property Measurement Standards incorporating International Property Measurement Standards (IPMS2 Residential). © nitchecom 2024. Produced for Camerons Stiff & Co. REF: 1120951

EPC: D

Ref: 18897199

