



Chatsworth Road, NW2

Leasehold - £585,000

We are delighted to bring to the market For Sale this modern & spacious First Floor apartment, providing 758 sq ft of luxurious living space in a sought after location close to Mapesbury Dell & Queen's Park.

This apartment has been stylishly designed with a contemporary open plan kitchen/reception room that creates an excellent entertaining space. There are two large double bedrooms both beautifully decorated with fitted wardrobes, one of them with en-suite shower room and a modern family bathroom.

Situated on this popular tree-lined road within easy walking distance of great transport facilities via Willesden Green & Kilburn (Jubilee - Zone 2), Brondesbury Park (Overground) and local buses. Excellent social amenities can be found in Kilburn and Willesden Green with a selection of independent eateries, cafes and gastropubs.

- Charming 2 bedroom First Floor flat offering 758 sq ft
- Herringbone wood flooring throughout & tiled kitchen
- Off-street parking
- COUNCIL: Brent (D)

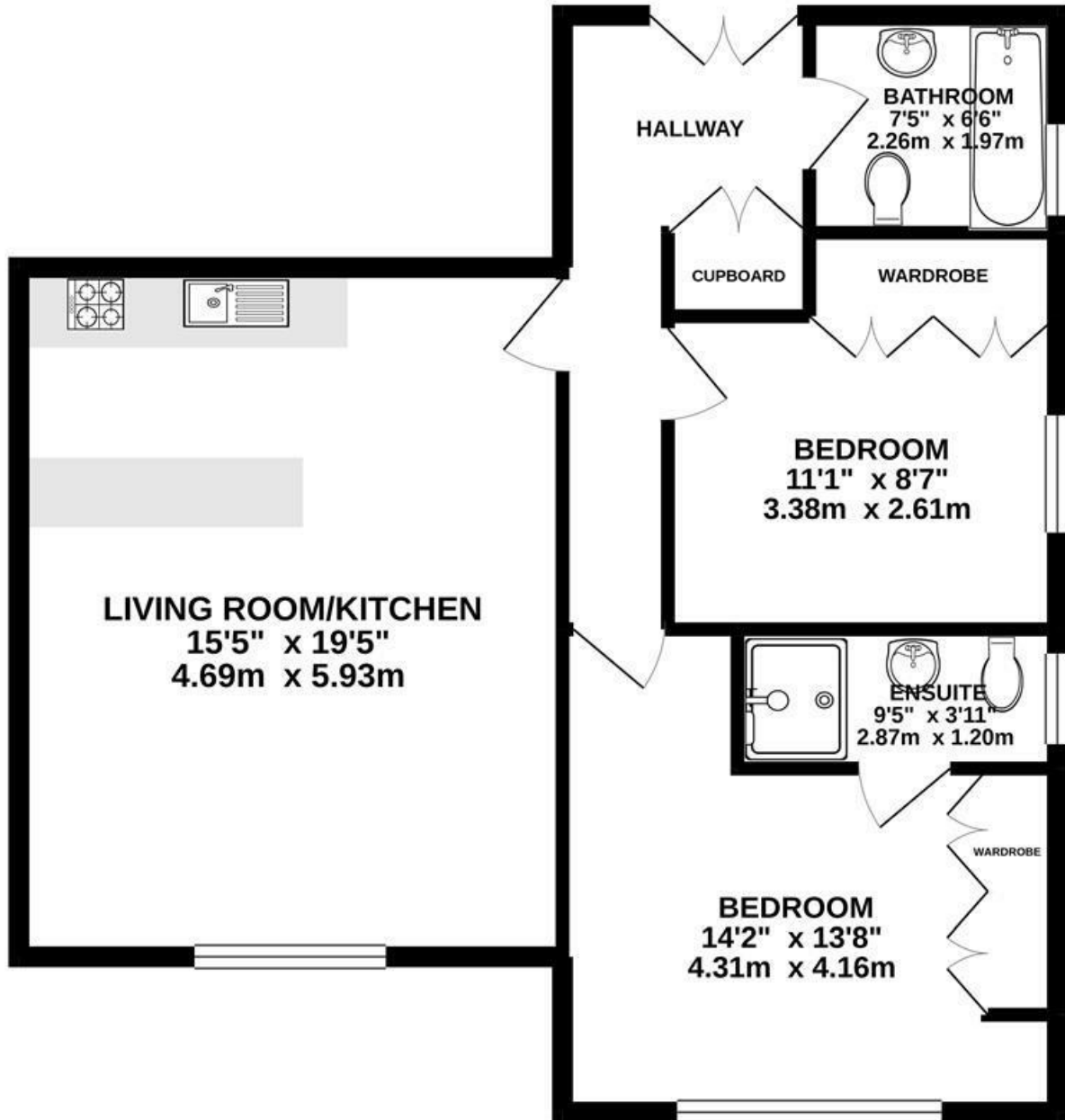
020 8459 1133

enquiries@cameronsstiff.co.uk

cameronsstiff.co.uk



1ST FLOOR



TOTAL FLOOR AREA : 758sq.ft. (70.4 sq.m.) approx.

Whilst every attempt has been made to ensure the accuracy of the floorplan contained here, measurements of doors, windows, rooms and any other items are approximate and no responsibility is taken for any error, omission or mis-statement. This plan is for illustrative purposes only and should be used as such by any prospective purchaser. The services, systems and appliances shown have not been tested and no guarantee as to their operability or efficiency can be given.
Made with Metropix ©2021.



EPC: B
Ref: 18911388

