



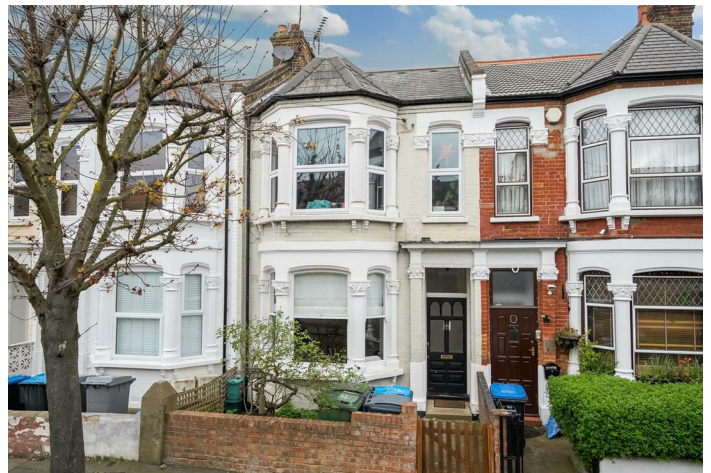
Leighton Gardens, NW10

Share of Freehold - £665,000

Introducing our latest gem: a two-bedroom Garden Flat nestled in the heart of the Kensal Green triangle. This Victorian terraced property offers a Share of Freehold and 659 sq ft of refined living.

Step inside to discover two inviting bedrooms and a three-piece family bathroom, but the real treat awaits in the spacious open plan kitchen/dining/living space at the rear. Adorned with French doors that open onto the meticulously landscaped garden, it's the perfect spot for entertaining or simply unwinding in style.

Convenience meets cosmopolitan living, as this property sits adjacent to Chamberlayne Road and Kensal Rise station. Indulge in the vibrant neighbourhood scene with an array of bars and restaurants at your doorstep, including favourites like Gail's and The Chamberlayne.



- Charming 2 bedroom flat with a 37 ft garden
- Original Victorian fireplace, wood flooring & corning
- Transport links: Kensal Rise (Overground – Zone 2)
- COUNCIL: Brent (D)

020 8459 1133

enquiries@cameronsstiff.co.uk

cameronsstiff.co.uk



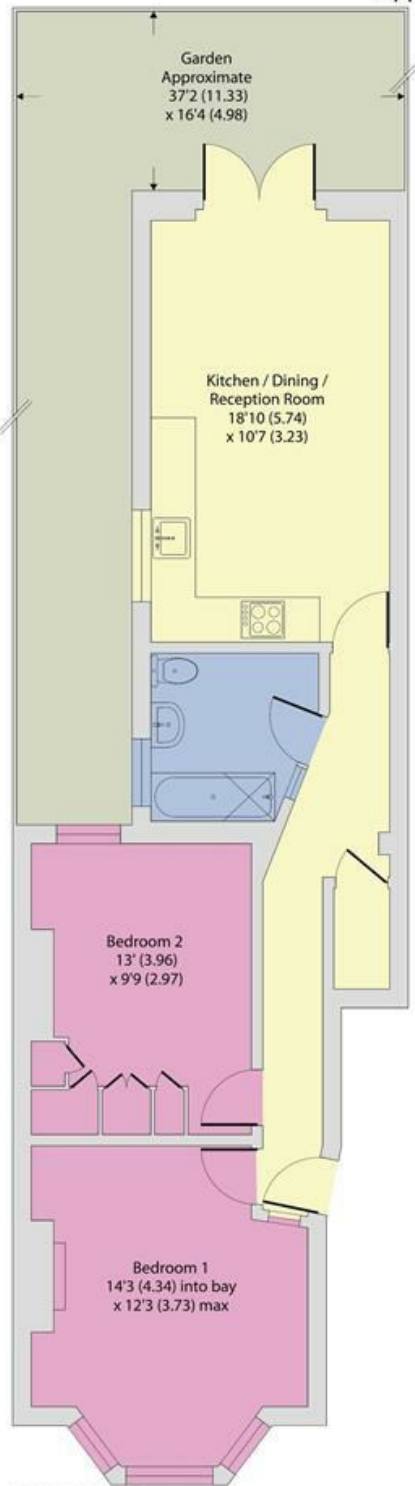




Leighton Gardens, London, NW10

Approximate Area = 659 sq ft / 61.2 sq m

For identification only - Not to scale



GROUND FLOOR



Floor plan produced in accordance with RICS Property Measurement Standards incorporating International Property Measurement Standards (IPMS2 Residential). © n/dhecom 2024. Produced for Camerons Stiff & Co. REF: 1101026

EPC: D

Ref: 18834842

