



Egerton Gardens, NW10

Freehold - £2,200,000

A superb semi detached fully extended family home in the heart of Kensal Rise. Situated in a quiet cul de sac location, tucked away from the vibrant Chamberlayne Road.

This halls adjoining 5 bedroom house offers 2608 sq ft of living space. The Ground Floor offers 2 spacious reception rooms, a kitchen/diner opening out onto a south-facing garden and a utility room. The First Floor comprises of 3 double bedrooms, to include a principal suite overlooking the gardens and 2 bathrooms. The loft conversion provides 2 further bedrooms, one with an en-suite shower room.

Egerton Gardens is nestled in the Kensal Triangle, which is a very popular area for young families and also one of the most popular parts of NW London in recent years, with its very popular High Street which offers some of the finest eateries, bars and restaurants.

- Semi-detached house offering 2583 sq ft
- Kensal Rise (Overground), Kensal Green (Bakerloo-Zone 2)
- Council: Brent F

020 8459 1133

enquiries@cameronsstiff.co.uk

cameronsstiff.co.uk







Egerton Gardens, London, NW10

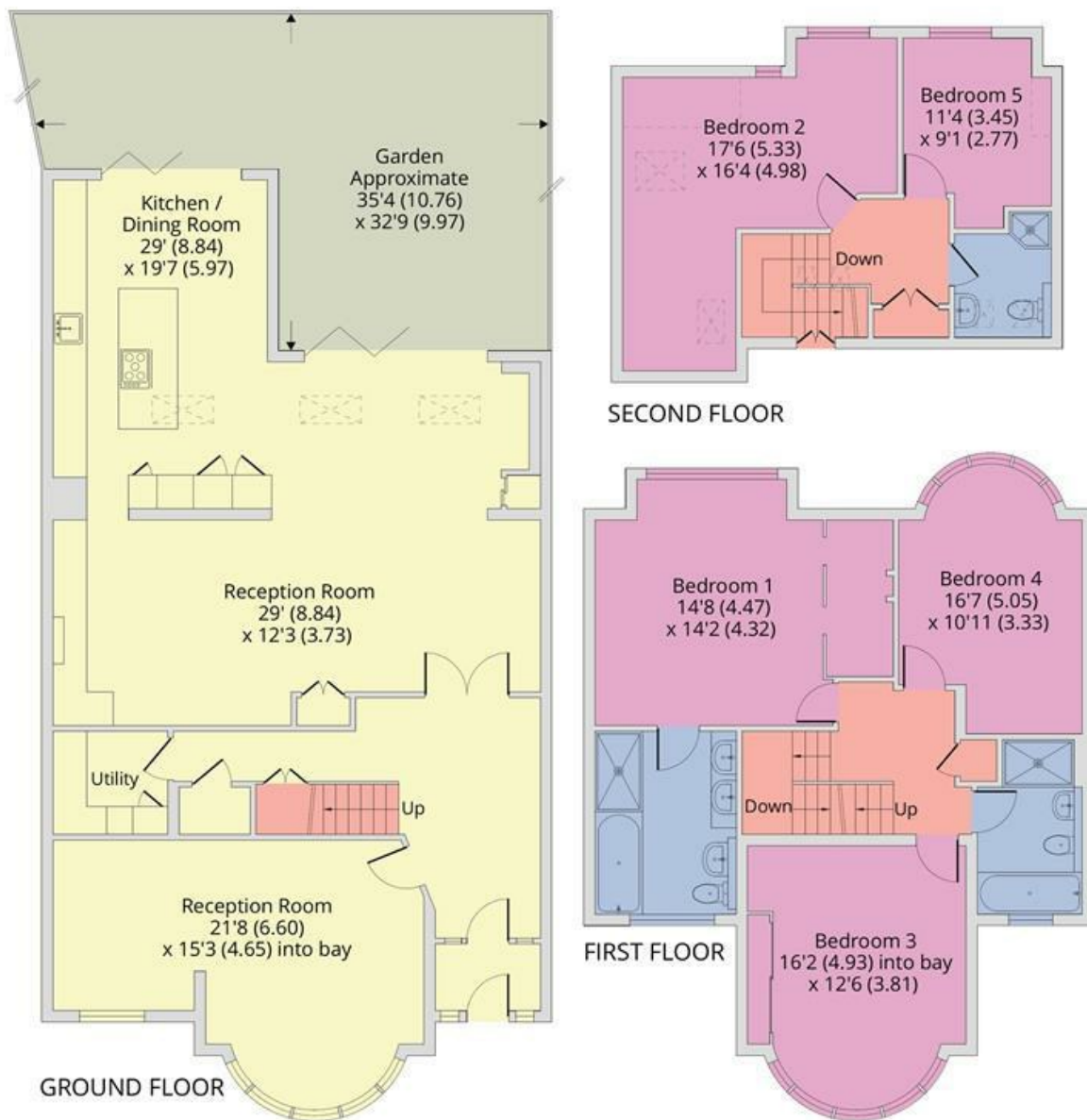
Approximate Area = 2583 sq ft / 239.9 sq m

Limited Use Area(s) = 25 sq ft / 2.3 sq m

Total = 2608 sq ft / 242.2 sq m

For identification only - Not to scale

Denotes restricted head height



Floor plan produced in accordance with RICS Property Measurement Standards incorporating International Property Measurement Standards (IPMS2 Residential). © nichecom 2024. Produced for Camerons Stiff & Co. REF: 989889

EPC: C

Ref: 18549129

