



## Blenheim Gardens, NW2

### Share of Freehold - £749,950

FOR SALE is this First Floor, four bedroom Flat set within this substantial red brick semi-detached building offering 1186 sq ft of well laid out accommodation in a highly sought after location.

Filled with an abundance of light this airy property comprises of a spacious reception room with large windows, plenty of storage space, fitted kitchen, four double bedrooms and family bathroom suite. The property presents an opportunity to acquire a sizeable apartment in an enviable location that an ambitious purchaser could reimagine in their own taste and style.

Blenheim Gardens is a quiet, tree lined residential street in Willesden Green, just seconds away from Willesden Green (Jubilee - Zone 2) and close to Walm Lane which offers an abundance of restaurants, bars, delis and a wide range of shopping facilities.

- First Floor, 4 bedroom flat offering 1186 sq ft
- Spacious reception & kitchen
- High ceilings & character features throughout
- Transport: Willesden Green (Jubilee - Zone 2)
- COUNCIL: Brent (E)
- Viewing recommended

020 8459 1133

[enquiries@cameronsstiff.co.uk](mailto:enquiries@cameronsstiff.co.uk)

[cameronsstiff.co.uk](http://cameronsstiff.co.uk)





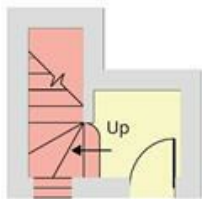
## Blenheim Gardens, London, NW2

Approximate Area = 1186 sq ft / 110.2 sq m

For identification only - Not to scale



FIRST FLOOR



GROUND FLOOR



Floor plan produced in accordance with RICS Property Measurement Standards incorporating International Property Measurement Standards (IPMS2 Residential). © nitchecom 2024. Produced for Camerons Stiff & Co. REF: 1084212

EPC: C

Ref: 18630727

