



Blenheim Gardens, NW2

Share of Freehold - £799,950

A four bedroom Garden Flat set within this substantial Red Brick semi-detached building providing 1272 sq ft of well laid out accommodation situated on a sought after street in Willesden Green.

Boasting high ceilings and character features, accommodation includes a bright reception with large windows, kitchen, access to a 61 ft private mature garden and four large double bedrooms which are serviced by two three-piece family bathrooms. The property requires modernisation but has enormous potential.

Blenheim Gardens is a quiet, tree lined residential street in Willesden Green, just seconds away from Willesden Green (Jubilee-Zone 2) and close to Walm Lane which offers restaurants, bars, delis and a wide range of shopping facilities.



- 4 bedroom Garden Flat offering 1272 sq ft
- Decorative high ceilings
- Spacious reception & kitchen
- 61 ft private mature garden
- Transport: Willesden Green Station (Jubilee-Zone 2)
- COUNCIL: Brent (E)

020 8459 1133

enquiries@cameronsstiff.co.uk

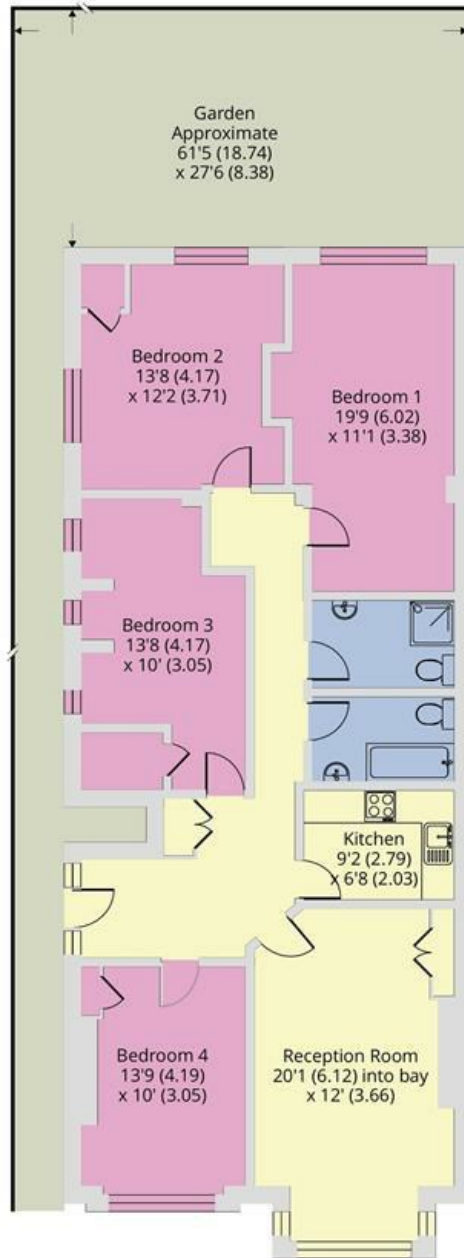
cameronsstiff.co.uk



Blenheim Gardens, London, NW2

Approximate Area = 1272 sq ft / 118.2 sq m

For identification only - Not to scale



GROUND FLOOR



Floor plan produced in accordance with RICS Property Measurement Standards incorporating International Property Measurement Standards (IPMS2 Residential). © nichecom 2024. Produced for Camerons Stiff & Co. REF: 1084215

EPC: E
Ref: 18630739

