



## Blenheim Gardens, NW2

### Share of Freehold - £899,950

For Sale is this stylish 3 bedroom Garden Flat offering 1200 sq ft over two floors. Converted from a large Victorian semi-detached house, this property offers very well proportioned rooms.

To the front is a large bay fronted reception room with a south west facing aspect. The property comprises of 3 double bedrooms with the main bedroom serviced by an en suite shower room. The well-designed Kitchen diner is on the Lower Ground Floor with doors opening out onto a staircase leading up to the garden. The garden can also be accessed on the Ground Floor level via the principal bedroom. Further benefits include off street parking and a side garage useful for storage purposes.

Blenheim Gardens is a quiet, tree lined residential street in Willesden Green, just seconds away from Willesden Green (Jubilee - Zone 2) and Walm Lane which offers some great café's and deli's.

- 3 Bedroom Garden Flat For Sale
- 1200 sq ft of well laid out accommodation
- Bright reception room with bay windows
- Beautiful garden & off street parking
- Transport: Willesden Green (Jubilee-Zone 2)
- COUNCIL: Brent (D)

020 8459 1133

[enquiries@cameronsstiff.co.uk](mailto:enquiries@cameronsstiff.co.uk)

[cameronsstiff.co.uk](http://cameronsstiff.co.uk)

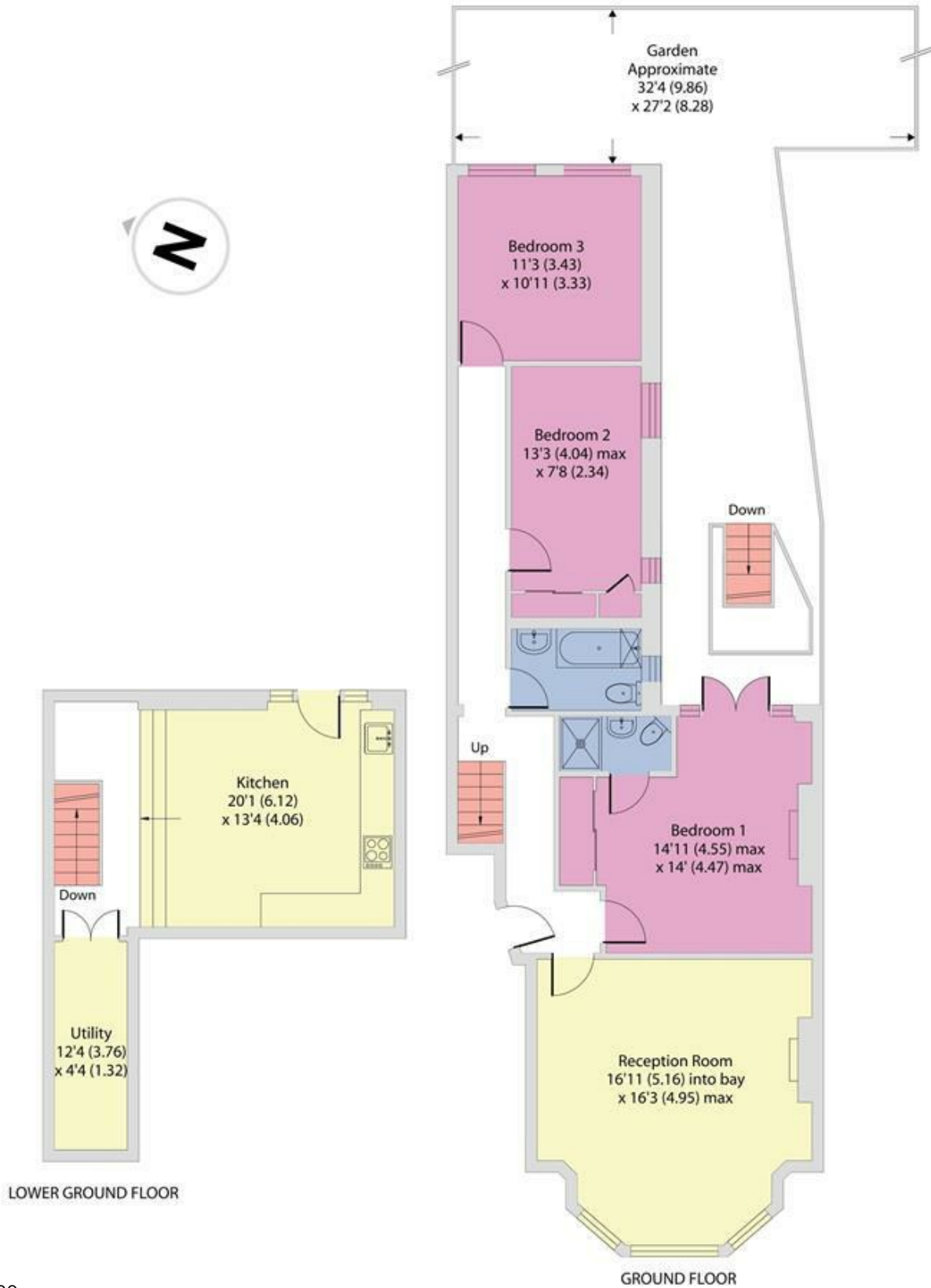




## Blenheim Gardens, London, NW2

Approximate Area = 1210 sq ft / 112.4 sq m

For identification only - Not to scale



EPC: D

Ref: 18662280



Floor plan produced in accordance with RICS Property Measurement Standards incorporating International Property Measurement Standards (IPMS2 Residential). © nichecom 2024. Produced for Camerons Stiff & Co. REF: 1033249

