



4 Albert Street, Queensbury, Bradford, BD13 1AT

£95,000

- TWO BEDROOM MID-TERRACE
- GAS CENTRAL HEATING
- GARDEN TO THE FRONT
- CLOSE TO VILLAGE AMENITIES
- POPULAR LOCATION
- BACK-TO-BACK
- UPVC DOUBLE GLAZING
- WALKING DISTANCE TO TESCO
- BUS ROUTES NEARBY
- CUL-DE-SAC

4 Albert Street, Bradford BD13 1AT

**** TWO BEDROOM MID-TERRACE ** BACK TO BACK ** GARDEN TO THE FRONT ** GAS CH & UPVC DG ** CLOSE TO LOCAL AMENITIES **** This ideal first time buyer property is located in the heart of Queensbury and is within easy reach of bus routes and Queensbury High St. Briefly comprising of an open plan Lounge and Kitchen, Cellar, two double Bedrooms and a Bathroom.



Council Tax Band: A



ENTRANCE VESTIBULE

Staircase to first floor and access to the lounge.

LOUNGE

14'8 x 13'2

Window to the front elevation, fireplace, central heating radiator and being open plan to:

KITCHEN AREA

Open plan kitchen with fitted base and wall units, four ring gas hob with electric oven below and extractor above, stainless steel sink unit with mixer tap and plumbing for a washing machine.

Access to the cellar.

CELLAR

Providing additional storage space.

FIRST FLOOR LANDING

Access to second floor and doors to bedroom one and the bathroom.

BEDROOM ONE

8'3 x 14'9

Window to the front elevation and a central heating radiator.

BATHROOM

White three piece suite comprising of a pedestal wash basin, W.C and a corner bath with an electric shower over. Central heating radiator and a window to the front elevation.

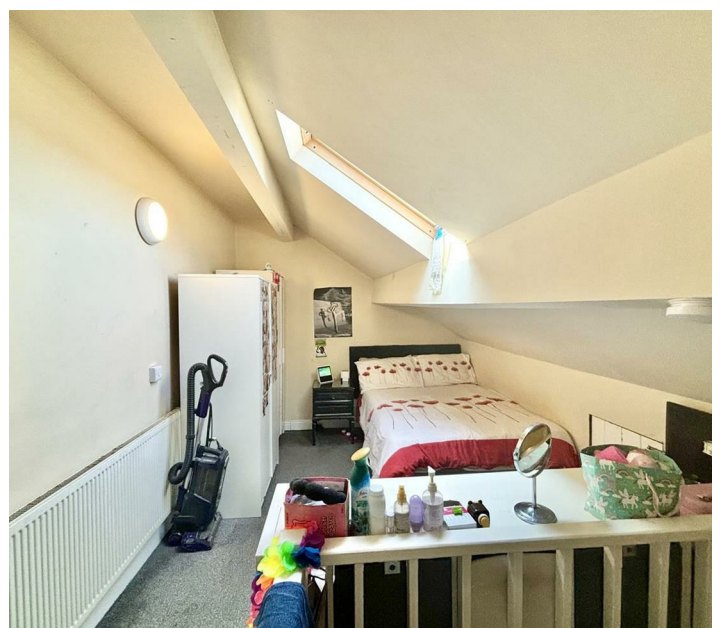
BEDROOM TWO

14'8 x 8'5

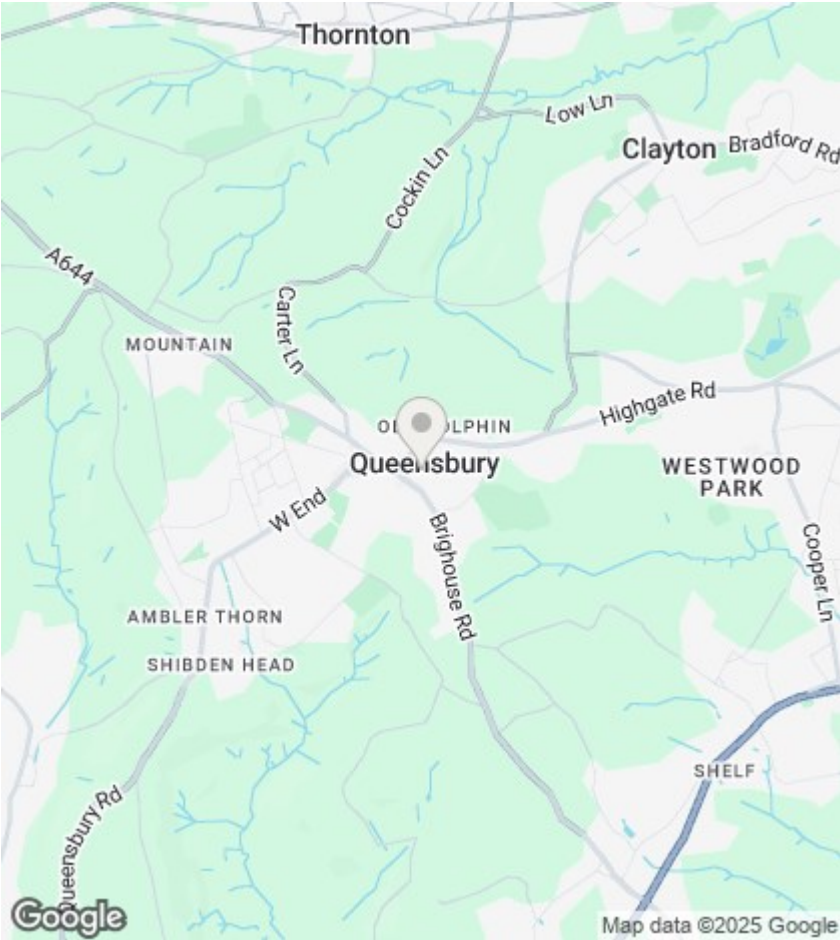
Attic bedroom with a velux window, central heating radiator and access to the eaves.

EXTERIOR

Enclosed garden to the front with artificial grass, walled boundary and garden gate.







Directions

Viewings

Viewings by arrangement only.
Call 01274884040 to make an appointment.

EPC Rating:
D

