



SIBLEY PARES

CHARTERED SURVEYORS & ESTATE AGENTS

Peel Street

Maidstone, ME14 2SA

£1,300 PCM

Peel Street

Maidstone, ME14 2SA

Key Features

- Three Bedroom Home
- Rear garden
- Within walking distance to Maidstone East
- On Street Parking Available

Description

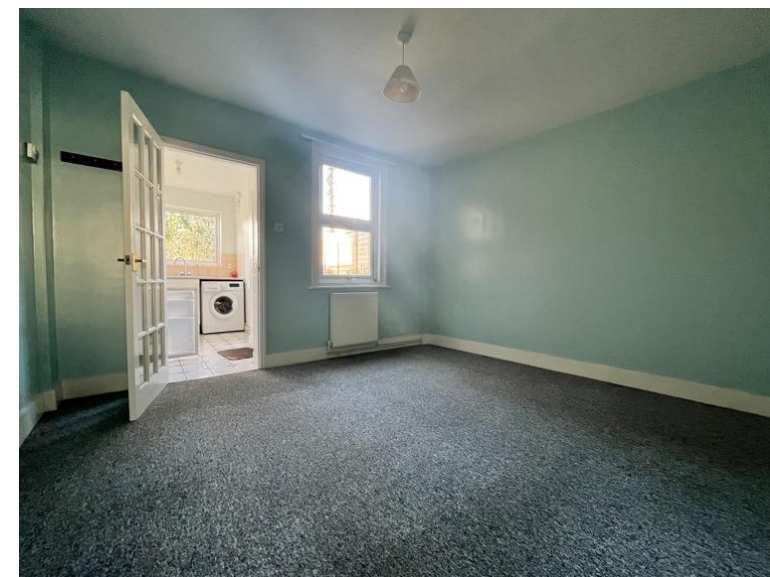
Centrally located to Maidstone Town centre, this three bedroom house is within easy reach of an array of local amenities. This spacious property comprises separate fitted kitchen/dining room along with a separate living area, family bathroom which is situated on the ground floor, one double bedroom and a two further bedrooms.

This family home also benefits from it's own spacious private rear garden, on street parking and useful cellar space.

The property is situated within walking distance to Maidstone Town Centre giving easy access to a variety of retail shops, restaurants and Aldi supermarket. Maidstone East Station is also within walking distance offering high speed links to London. It is also situated near local schools.

NOTE: Rental, prices or any other charges are inclusive of VAT unless otherwise stated.

MISREPRESENTATION ACT 1967. These particulars are believed to correct, their accuracy cannot be guaranteed and are expressly excluded from any other contract. Any intending purchaser must satisfy himself by inspection or otherwise as to the correctness of each of the statements contained in these particulars. No fittings, appliances or services mentioned have been tested by Sibley Pares. Please note that In accordance with Money Laundering Regulations, we are now required to obtain proof of identity for purchasers.



1 Ashford Road, Maidstone, Kent ME14 5BJ
sibleypares.co.uk | Maidstone (01622) 673086 | Ashford (01233) 629281

Partners: Sarah Raggett, BSc (Hons) MRICS | Phillip Hubbard, BA (Hons) MRICS
Sibley Pares Chartered Surveyors is a trading name of Sibley Pares LLP

Registered in England and Wales No: OC400776. | Registered as above. | VAT Reg No: 218 5130 30.