



SIBLEY PARES

CHARTERED SURVEYORS & ESTATE AGENTS



The Nursery

Bredhurst, Gillingham, Kent, ME7 3ND

GUIDE PRICE £925,000 to £985,000

The Nursery

Bredhurst, Gillingham, Kent, ME7 3ND

Key Features

- Four Bedroom Detached Family Home
- Guide Price £925,000 to £985,000
- Four Double Bedrooms
- Stunning Kitchen/Dining Room
- Double Garage with Parking for Multiple Vehicles
- Sought After Location

Description

Four detached four bedroom family house, with stunning rural views.

The Nursery is an exclusive gated development of just four detached family homes currently being built by locally based developer, Classic Property Holdings. Each house has been specified with meticulous attention to detail and will be sold with the benefit of a 10 Year Homebuilders Warranty.

The ground floor of this family home benefits from underfloor heating throughout and comprises an inviting entrance hall, 26' double aspect living room, bespoke German kitchen/dining room with granite work surfaces and Neff integrated appliances, study, utility room and guest cloakroom.

Upstairs, the principle bedroom features bi-fold doors onto an indulgent balcony, as well as an en-suite shower room. There are also three further double bedrooms and a family bathroom.

The property also benefits from a gated entrance leading to the double garage with space for a games room/office above and off street parking for several cars.



The Nursery

Bredhurst, Gillingham, Kent, ME7 3ND

Location

Oak Lodge is situated in the village of Bredhurst, 2 miles from junction 4 of the M2 motorway and approximately 3.0 miles away from Rainham train station which offers direct services to many of London's major stations, including St Pancras International in 49 minutes , Stratford International, Cannon Street, Blackfriars and Victoria in 57 minutes

Lovers of outdoor pursuits will be spoilt for choice with the 'Garden of England' on their doorstep. Whether it's long country walks, a leisurely round of golf or even a trip to the beach, Oak Lodge is perfectly placed for everything Kent has to offer.

For those with a more global outlook on life, Ebbsfleet International is a mere 18 miles away, offering direct services to Paris in around 2 hours. Gatwick Airport is only 43 miles away and easily accessible via the motorway network.

For all Viewings and Enquiries contact:



Mr Mitchell Bourner
mitchell.bourner@sibleypares.co.uk



Mr Marcus Monger
marcus.monger@sibleypares.co.uk



SIBLEY PARES

CHARTERED SURVEYORS & ESTATE AGENTS

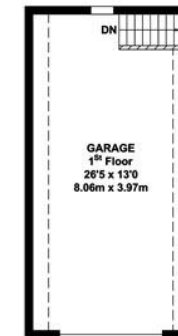
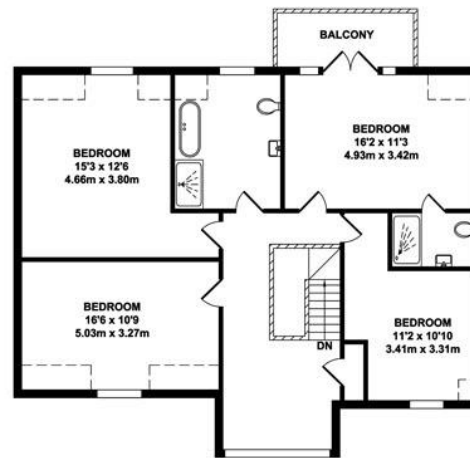
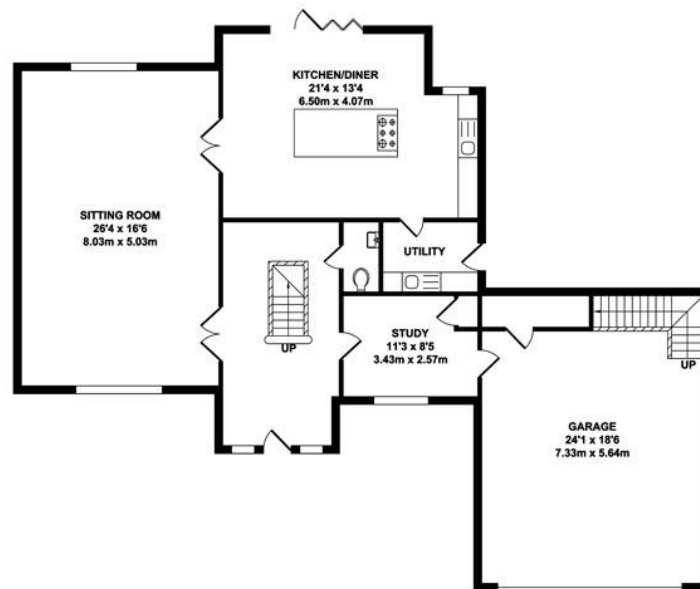
01622 673086

sibleypares.co.uk





Floorplan and Dimensions



TOTAL APPROX. FLOOR AREA 2959 SQ.FT. (274.93 SQ.M.)

Whilst every attempt has been made to ensure the accuracy of the floor plan contained here, measurements of doors, windows, rooms and any other items are approximate and no responsibility is taken for any error, omission or mis-statement. This plan is for illustrative purposes only and should be used as such by any prospective purchaser. The services, systems and appliances shown have not been tested and no guarantee as to their operability or efficiency can be given.

Zome Media ©2023

NOTE: Rental, prices or any other charges are inclusive of VAT unless otherwise stated.

MISREPRESENTATION ACT 1967. These particulars are believed to be correct, their accuracy cannot be guaranteed and are expressly excluded from any other contract. Any intending purchaser must satisfy himself by inspection or otherwise as to the correctness of each of the statements contained in these particulars. No fittings, appliances or services mentioned have been tested by Sibley Pares. Please note that in accordance with Money Laundering Regulations, we are now required to obtain proof of identity for purchasers.



1 Ashford Road, Maidstone, Kent ME14 5BJ
sibleypares.co.uk | Maidstone (01622) 673086 | Ashford (01233) 629281

Partners: Sarah Raggett, BSc (Hons) MRICS | Phillip Hubbard, BA (Hons) MRICS

Sibley Pares Chartered Surveyors is a trading name of Sibley Pares LLP

Registered in England and Wales No: OC400776. | Registered as above. | VAT Reg No: 218 5130 30.