



SIBLEY PARES

CHARTERED SURVEYORS & ESTATE AGENTS



Wren House, Greenwich Close

Maidstone, Kent, ME16 0JA

£900,000

Wren House, Greenwich Close

Maidstone, Kent, ME16 0JA

Key Features

- Five Bedroom Detached New Home
- Modern Fitted Kitchen and Island with Breakfast Bar
- Driveway and Garage with Parking for Multiple Vehicles
- Open-Plan Contemporary Living
- Two En-Suite Shower Rooms and Family Bathroom
- Excellent Transport Links

Description

Wren House, a prestigious five bedroom, three bathroom newly built detached family home. Wren House has been designed and finished to a high specification with contemporary decor and meticulous attention to details throughout.

The ground floor offers underfloor heating and comprises an open plan kitchen/dining room with granite work surfaces, integrated appliances, island with breakfast bar and dual bi-fold doors leading to a magnificent private rear garden. There is also a spacious living room, a study/home office, utility room, entrance hall and guest cloakroom.

The first floor features a spacious primary bedroom with en-suite shower room, second bedroom with en-suite shower room, a further three double bedrooms and a family bathroom with separate shower and bath.

Externally the property benefits from a driveway with parking for multiple vehicles, a garage with integral access via the utility room and EV charging point and the rear garden which offers a large patio area with the remainder of the garden laid to lawn.



Wren House, Greenwich Close

Maidstone, Kent, ME16 0JA

Location

Wren House is conveniently situated in Maidstone, a perfect location for various local amenities, schools and travel links, allowing easy access to the M20 & M2 motorways. Access into Maidstone town is either a short drive or bus journey away with regular services running into the centre being on the Maidstone Hospital route. Maidstone has a wealth of shopping facilities, entertainment venues and eateries. Along with Maidstone East and West rail stations offering high speed links to London.

For schools, both Jubilee and Bower Grove Primary Schools are both rated Ofsted 'Outstanding' and only a short walk away. The nearby Oakwood Park complex offers a variety of secondary schools as well as Mid-Kent College.

■ EPC Rating TBC

■ Council Tax Band TBC

■ Maidstone Borough Council

■ For Broadband Speed Refer to the Ofcom Website

For all Viewings and Enquiries contact:



Mr Mitchell Bourner
mitchell.bourner@sibleypares.co.uk



Phil Hubbard
phil.hubbard@sibleypares.co.uk



SIBLEY PARES

CHARTERED SURVEYORS & ESTATE AGENTS

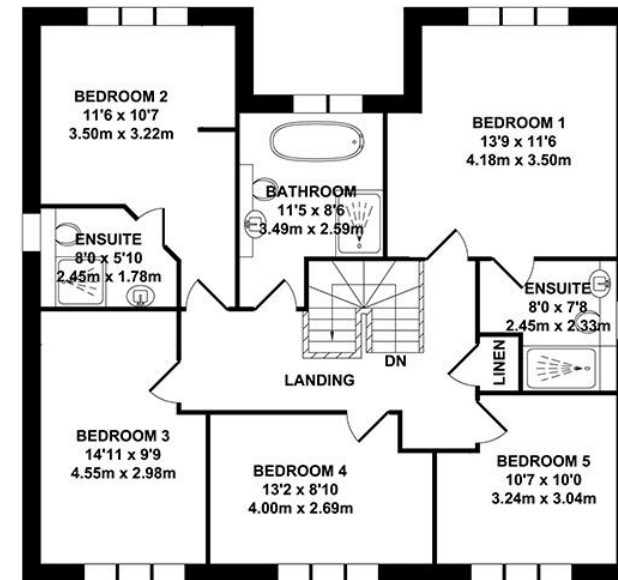
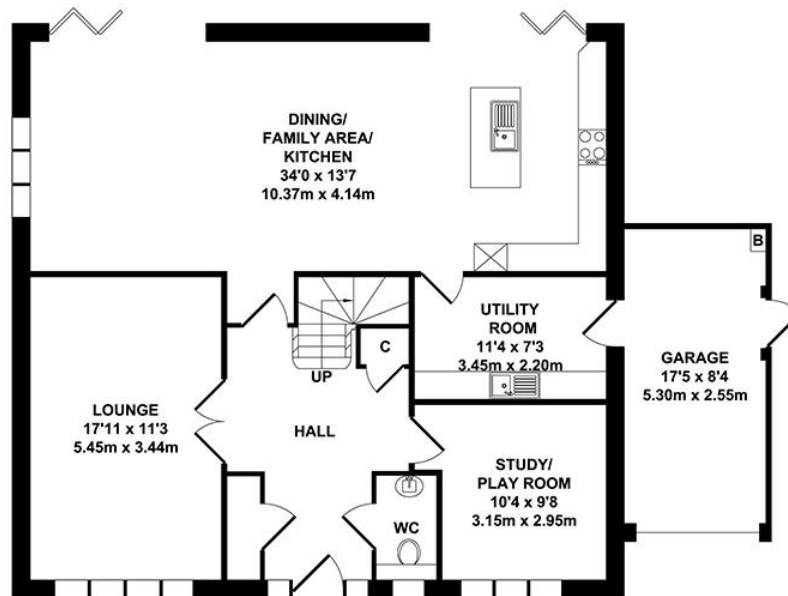
01622 673086

sibleypares.co.uk





Floorplan and Dimensions



TOTAL APPROX. FLOOR AREA 2269 SQ.FT. (210.83 SQ.M.)

Whilst every attempt has been made to ensure the accuracy of the floor plan contained here, measurements of doors, windows, rooms and any other items are approximate and no responsibility is taken for any error, omission or mis-statement. This plan is for illustrative purposes only and should be used as such by any prospective purchaser. The services, systems and appliances shown have not been tested and no guarantee as to their operability or efficiency can be given.
Zome Media ©2024

NOTE: Rental, prices or any other charges are inclusive of VAT unless otherwise stated.

MISREPRESENTATION ACT 1967. These particulars are believed to be correct, their accuracy cannot be guaranteed and are expressly excluded from any other contract. Any intending purchaser must satisfy himself by inspection or otherwise as to the correctness of each of the statements contained in these particulars. No fittings, appliances or services mentioned have been tested by Sibley Pares. Please note that in accordance with Money Laundering Regulations, we are now required to obtain proof of identity for purchasers.



1 Ashford Road, Maidstone, Kent ME14 5BJ
sibleypares.co.uk | Maidstone (01622) 673086 | Ashford (01233) 629281

Partners: Sarah Raggett, BSc (Hons) MRICS | Phillip Hubbard, BA (Hons) MRICS

Sibley Pares Chartered Surveyors is a trading name of Sibley Pares LLP

Registered in England and Wales No: OC400776. | Registered as above. | VAT Reg No: 218 5130 30.