



4 Coppertree Walk  
Thrapston, Northants NN14 4RQ



**Simpson & Partners**

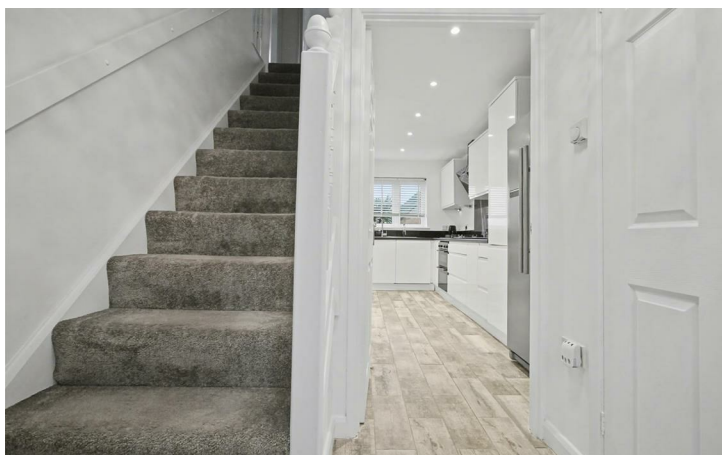


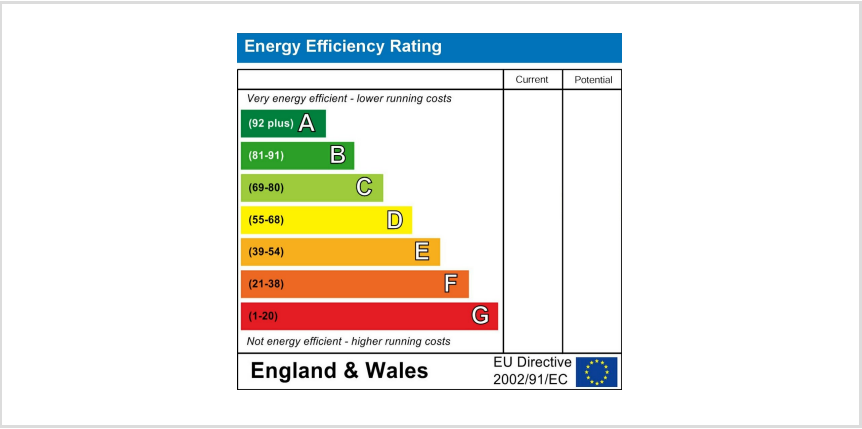
\*Available immediately\* Located on Coppertree Walk in Thrapston, this immaculately presented four-bedroom home offers comfortable, modern living in a popular residential area. The property has been freshly decorated throughout and provides generous accommodation comprising: entrance hall, downstairs cloakroom, living room, separate dining room, modern fitted kitchen, four good size bedrooms, brand new en-suite shower room and further brand new family bathroom. The property further benefits from an enclosed rear garden, single garage and off road parking. An internal viewing is highly recommended. EPC rating C, council tax band C. A pet considered, please note that the landlord may request an extra £25-£50 per month pet pet).



£1,600 Per Month

4 2 2





When you buy with Simpson and Partners, you know **you'll be in safe hands**. From the moment you walk through our doors, we'll make you **feel truly welcome**. Our sales consultants and financial advisors will take you through **every step of the process**, offering **free expert advice** along the way, from help choosing the right mortgage and insurance through to finding your conveyancer. And if you need help selling your home too, **with over 20 years of local experience, you can trust us to get you moving**.



**Simpson  
& Partners**

Making Every  
Journey Personal



01832 731222

[thrapston@simpsonandpartners.co.uk](mailto:thrapston@simpsonandpartners.co.uk)

<https://www.simpsonandpartners.co.uk/>

43-45 High Street, Thrapston, Northants, NN14 4JJ