



4 Gladstone Street
Ringstead, NN14 4DE

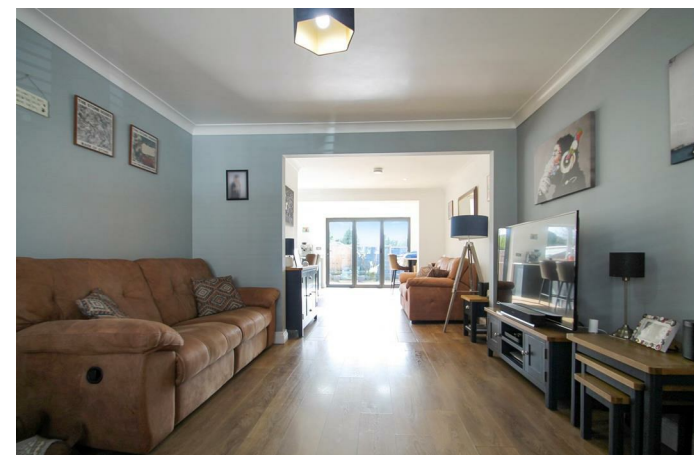


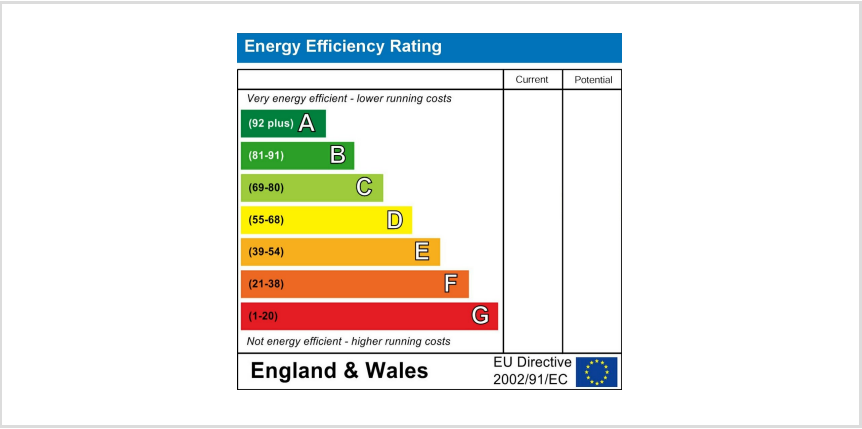
Simpson & Partners

Available immediately! A three bedroom detached family home located in the heart of Ringstead. Presented in excellent condition throughout, the property comprises: entrance hall, downstairs cloakroom, living room with feature log burner, through to open plan kitchen/dining area with bifold doors to the garden and utility room. To the first floor there are three generous bedrooms and family bathroom. Externally the property further benefits from an enclosed low maintenance rear garden, single garage with power, lighting and an electric door, driveway providing off road parking and an electric car charger. Fitted with a Nest heating system, underfloor heating in the kitchen and dining area and a contemporary feel throughout an interval viewing is highly recommended. Sorry no pets. Available immediately. Council tax band D, EPC rating C.



£1,350 Per Calendar Month





When you buy with Simpson and Partners, you know **you'll be in safe hands**. From the moment you walk through our doors, we'll make you **feel truly welcome**. Our sales consultants and financial advisors will take you through **every step of the process**, offering **free expert advice** along the way, from help choosing the right mortgage and insurance through to finding your conveyancer. And if you need help selling your home too, **with over 20 years of local experience, you can trust us to get you moving**.



**Simpson
& Partners**

Making Every
Journey Personal



01832 731222

thrapston@simpsonandpartners.co.uk

<https://www.simpsonandpartners.co.uk/>

43-45 High Street, Thrapston, Northants, NN14 4JJ