



5 Kestrel Drive
Thrapston, Northants NN14 4GH



Simpson & Partners



GUIDE PRICE £350,000 TO £375,000. This spacious and well presented four double bedroom detached home was constructed by David Wilson Homes to a high specification and situated on the edge of the market town of Thrapston within walking distance to all amenities in the town and countryside walks on your doorstep. Further benefits include single garage, off road parking and enclosed garden. Enter the property into the spacious hallway with stairs rising to the first floor, Karndean flooring and useful understairs cupboard, living room set to the front with dual aspect and feature fireplace, to the rear is a lovely light and airy kitchen/dining room providing ideal family/entertaining space. The kitchen is fitted with ample storage units with integrated appliances to include: oven, hob and extractor fan, wine fridge, dishwasher and fridge/freezer, under unit and kick board lighting, Karndean flooring. Door leads through to useful utility room with integrated washer/dryer and door to cloakroom. To the first floor are four good sized bedrooms with built in storage and en-suite to master bedroom, family bathroom fitted with a three piece suite comprising of bath with shower over. Externally to the front is a driveway providing off road parking leading to an integral single garage with power connected, lawn front garden with shrub border and gated access to the rear. The rear garden is west facing, enclosed with timber fencing, having patio area and lawn with timber shed. Viewing is highly recommended to appreciate the location and beautiful interior of this detached home.

COUNCIL TAX BAND D

EPC RATING B

 4  2  1

Guide Price £350,000



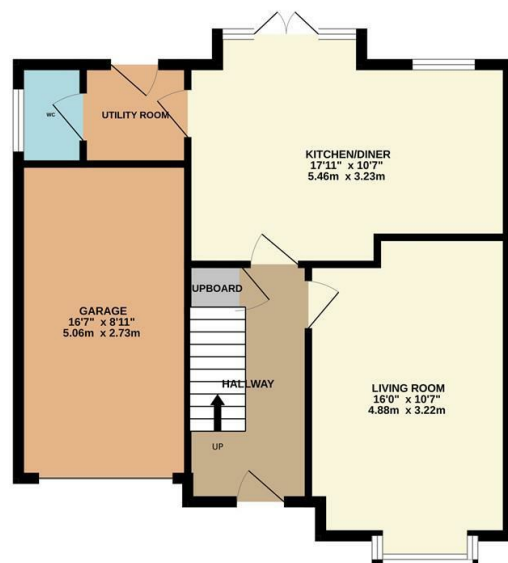
The market town of Thrapston offers many facilities to include shops, pubs, schooling, doctors and dentist, and is conveniently located for rural and riverside walks.

The new Rushden Lakes development is a short drive away providing many amenities to include shopping, cinema and restaurants.

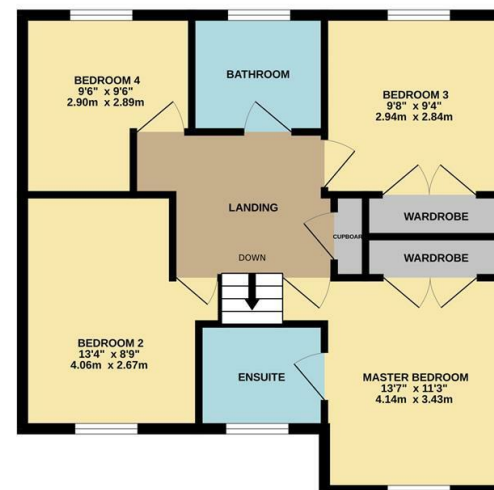


Simpson & Partners

GROUND FLOOR
624 sq.ft. (57.9 sq.m.) approx.

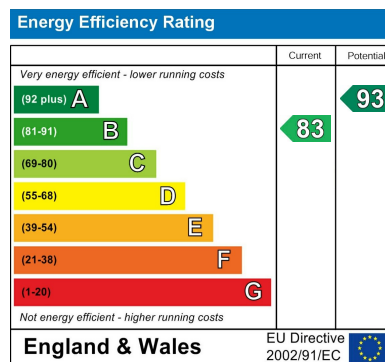


1ST FLOOR
592 sq.ft. (55.0 sq.m.) approx.



TOTAL FLOOR AREA : 1215 sq.ft. (112.9 sq.m.) approx.

Whilst every attempt has been made to ensure the accuracy of the floor plan contained here, measurements of doors, windows, rooms and any other items are approximate and no responsibility is taken for any error, omission, or mis-statement. The plan is copyright to Simpson and Partners and is for illustrative purposes and should only be used as such by any prospective purchaser. The services, systems and appliances shown have not been tested and no guarantee as to their operability can be given.
Made with Metropix ©2025



When you buy with Simpson and Partners, you know **you'll be in safe hands**. From the moment you walk through our doors, we'll make you **feel truly welcome**. Our sales consultants and financial advisors will take you through **every step of the process**, offering **free expert advice** along the way, from help choosing the right mortgage and insurance through to finding your conveyancer. And if you need help selling your home too, **with over 20 years of local experience, you can trust us to get you moving**.



**Simpson
& Partners**

Making Every
Journey Personal



01832 731222

thrapston@simpsonandpartners.co.uk

<https://www.simpsonandpartners.co.uk/>

43-45 High Street, Thrapston, Northants, NN14 4JJ