



23 Pierce Crescent
Warmington, Northants PE8 6UG



Simpson & Partners



Location Location Location! This well presented, modern detached bungalow is situated in the sought after village of Warmington with lovely countryside walks on your door step and a short walk to all local amenities to include, shop, pub and primary schooling. Further benefits include off road parking, single garage and conservatory to the rear. Enter the property into porch which in turn leads into open plan living/dining room having bay window to front, opening through to modern fitted kitchen with breakfast bar area, ample storage units, space and plumbing for washing machine, integrated appliances to include oven, hob, extractor, fridge/freezer and dishwasher, door to rear garden. Refitted modern bathroom fitted with a three piece suite comprising bath with shower over, vanity storage with low level wc and wash hand basin. Three good sized bedrooms with built in storage to bedroom one and lovely conservatory to the rear overlooking the rear garden. Externally to the front is a driveway providing off road parking leading to a single garage with up and over door and window to the rear. Low maintenance front garden laid to gravel with shrub borders and gated access to a private rear garden laid to patio with shrub borders and timber garden shed. Viewing is highly recommended to appreciate the location and interior of this detached bungalow.

 3

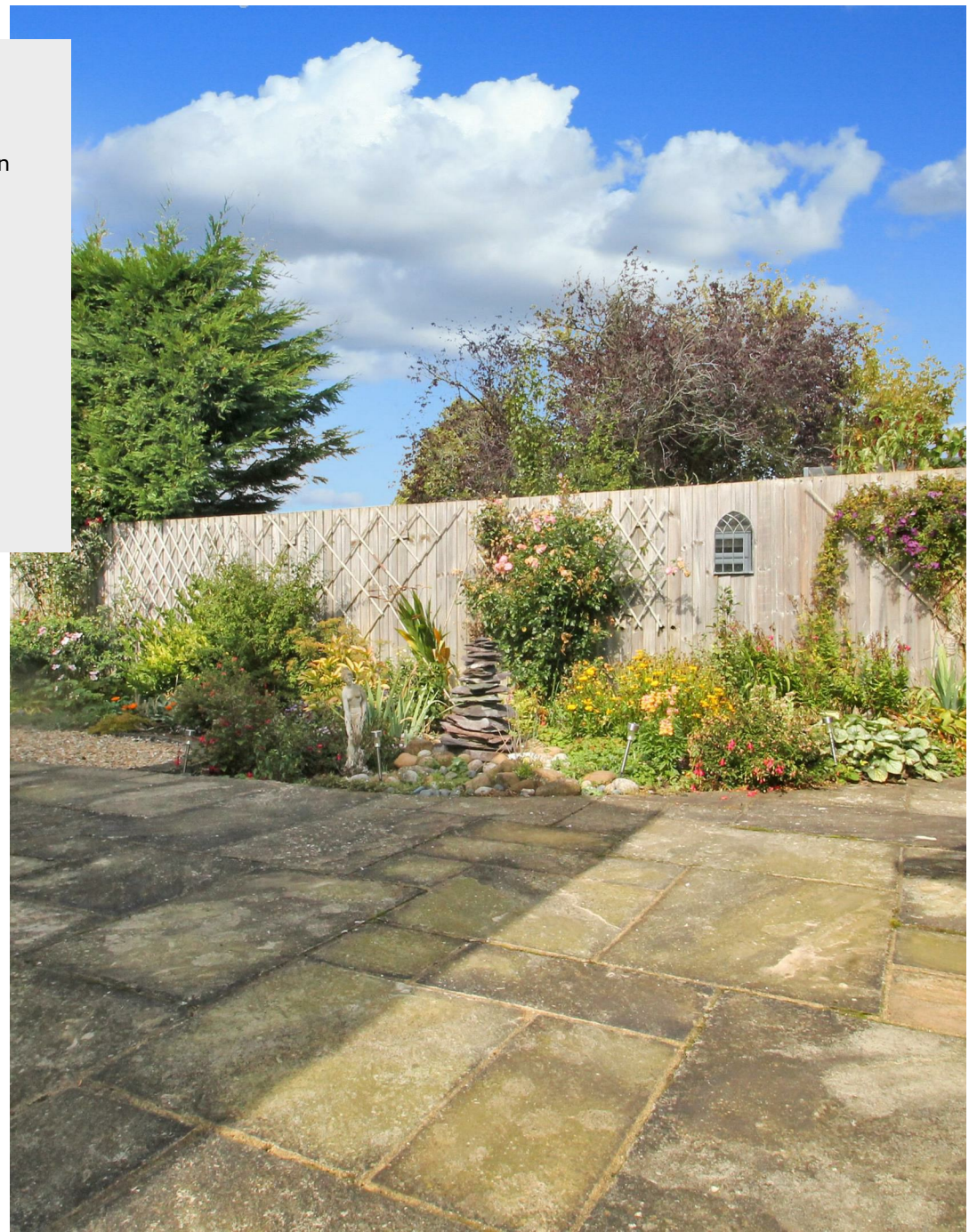
 1

 1

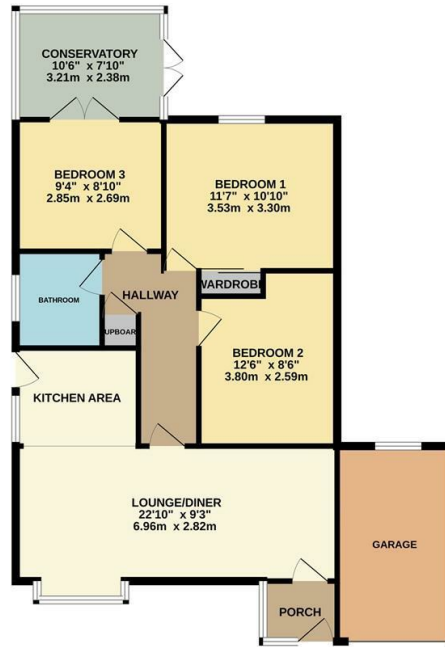
Price £365,000



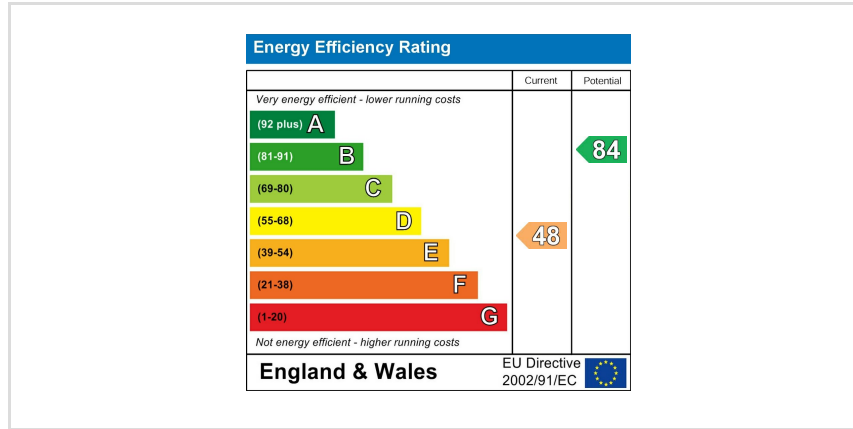
Warmington offers a lovely rural village feel with a strong local community and many amenities to include, a primary school, village shop, post office, a butcher's and pub. The nearest junior and secondary schools are in Oundle. It is 2½ miles east of the town of Oundle near the Cambridgeshire border and is 10 miles south west of the city of Peterborough, both of which offer many amenities and train links in Peterborough. Good road network links to the A1/A14 and M6.



GROUND FLOOR
975 sq.ft. (90.6 sq.m.) approx.



TOTAL FLOOR AREA - 975 sq.ft. (90.6 sq.m.) approx.
Whilst every attempt has been made to ensure the accuracy of the floor plan contained here, measurements of walls, windows, doors and any other items are approximate and no responsibility is taken for any error, omission, or mis-statement. The plan is copyright to Simpson and Partners and is for illustrative purposes and should only be used as such by any prospective purchaser. The services, systems and appliances shown have not been tested and no guarantee as to their operability can be given.
Made with Hologram 02024



When you buy with Simpson and Partners, you know **you'll be in safe hands**. From the moment you walk through our doors, we'll make you **feel truly welcome**. Our sales consultants and financial advisors will take you through **every step of the process**, offering **free expert advice** along the way, from help choosing the right mortgage and insurance through to finding your conveyancer. And if you need help selling your home too, **with over 20 years of local experience, you can trust us to get you moving**.



**Simpson
& Partners**

Making Every
Journey Personal



01832 731222

thrapston@simpsonandpartners.co.uk

<https://www.simpsonandpartners.co.uk/>

43-45 High Street, Thrapston, Northants, NN14 4JJ