



9 Meeting Lane

Irthlingborough, Northants NN9 5SQ



Simpson & Partners

Former 18th century Baptist Church that has been converted into four lovely homes with communal garden to the rear. This mid terrace home offers flexible accommodation across three floors boasting entrance hall, downstairs wc, kitchen, living room with door to the rear. To the first floor are two bedrooms with en-suites and to the second floor is a further bedroom with en-suite. Communal garden to the rear. Situated in the sought after town of Irthlingborough offering many amenities to include shops, cafe's, restaurants, schooling, doctors and country walks situated on the edge of the town. Viewing is highly recommended.

Currently the whole block is used as 2 x three bedroom and 2 x four bedroom HMO properties (housing for multiple occupants). Offering a gross income of £8200 pm across the 14 rooms.

Offered to the market as separate dwellings with a share of the freehold or as a whole.

Offers In Excess Of £250,000



3

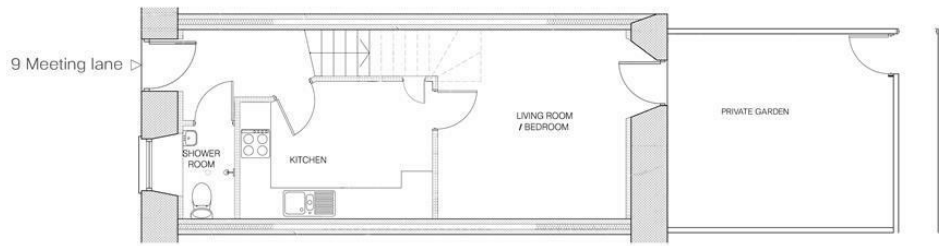


3

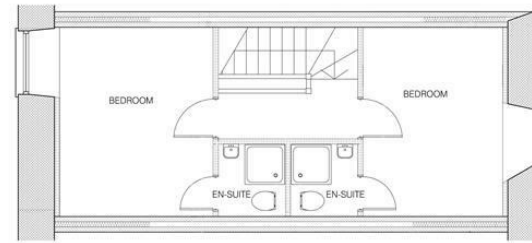


1

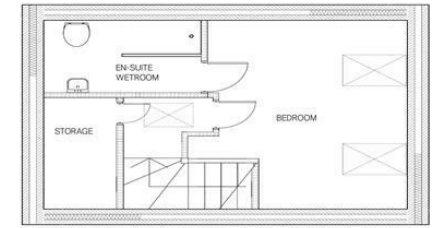




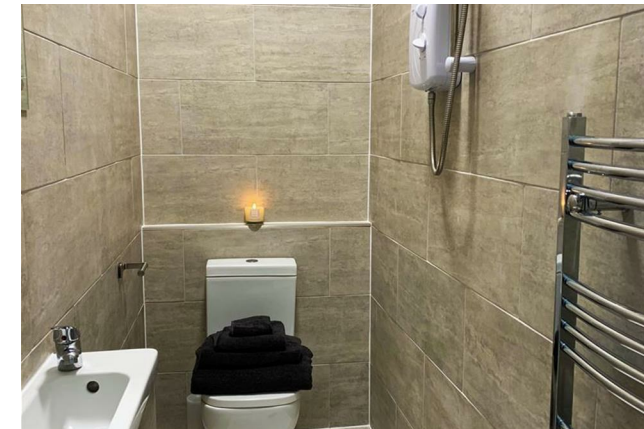
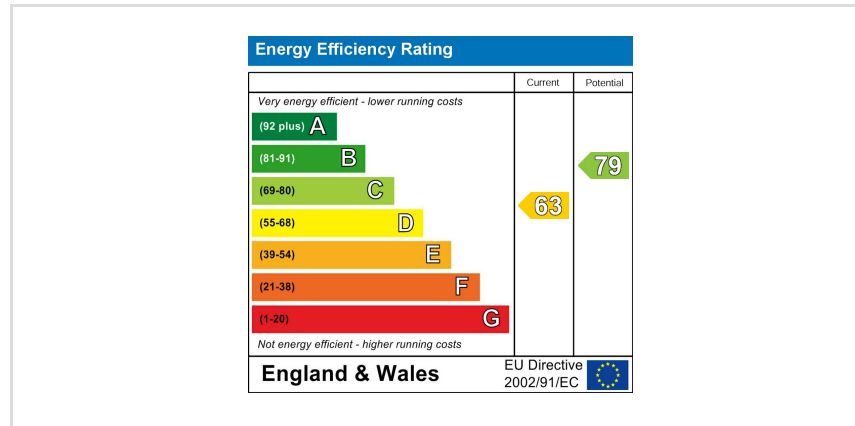
Ground Floor



First Floor



Second Floor



When you buy with Simpson and Partners, you know **you'll be in safe hands**. From the moment you walk through our doors, we'll make you **feel truly welcome**. Our sales consultants and financial advisors will take you through **every step of the process**, offering **free expert advice** along the way, from help choosing the right mortgage and insurance through to finding your conveyancer. And if you need help selling your home too, **with over 20 years of local experience, you can trust us to get you moving**.



**Simpson
& Partners**

Making Every
Journey Personal



01832 731222

thrapston@simpsonandpartners.co.uk

<https://www.simpsonandpartners.co.uk/>

43-45 High Street, Thrapston, Northants, NN14 4JJ