



10 Lilac Close
Thrapston, Northants NN14 4RJ



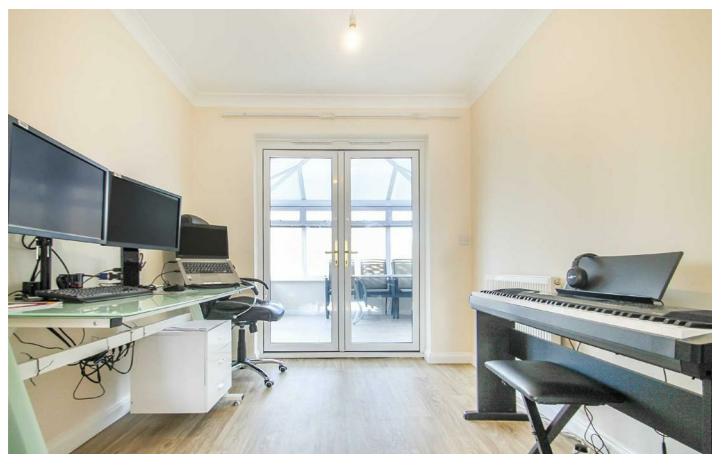
Simpson & Partners

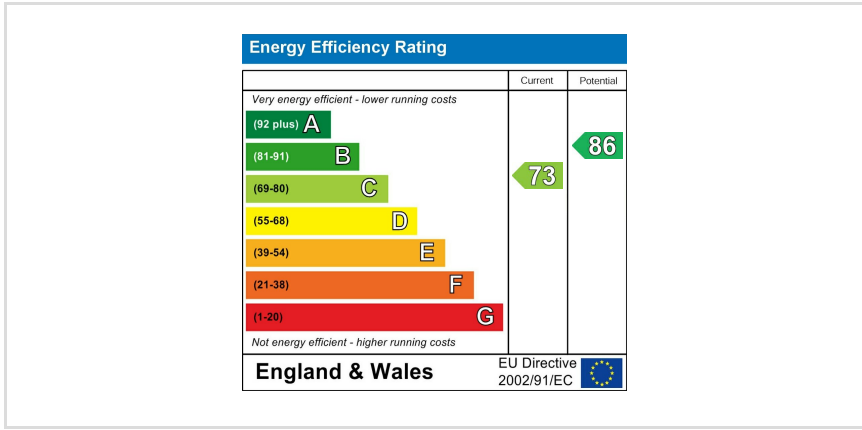
****Available May 2024**** Simpson and Partners are delighted to welcome to the market this modern three bedroom family home. The accommodation is presented in very good condition throughout and comprises: entrance hall, living room, dining room, conservatory, kitchen, downstairs cloakroom, master bedroom with an en-suite shower room, two further bedrooms and family bathroom. The property further benefits from a good size, private rear garden and single garage. Available mid April 2024. A cat considered, please note that the Landlord may charge an extra £25-£50 per month for a pet (sorry no dogs) Council tax band D, EPC rating C.



£1,250 PCM

 3  2  2





When you buy with Simpson and Partners, you know **you'll be in safe hands**. From the moment you walk through our doors, we'll make you **feel truly welcome**. Our sales consultants and financial advisors will take you through **every step of the process**, offering **free expert advice** along the way, from help choosing the right mortgage and insurance through to finding your conveyancer. And if you need help selling your home too, **with over 20 years of local experience, you can trust us to get you moving**.



**Simpson
& Partners**

Making Every
Journey Personal



01832 731222

thrapston@simpsonandpartners.co.uk

<https://www.simpsonandpartners.co.uk/>

43-45 High Street, Thrapston, Northants, NN14 4JJ