



2 Paddock Road

Woodford, Northamptonshire NN14 4FL

Simpson
and Partners



Located on the outskirts of this sought after village of Woodford with stunning views to the front of the property over rolling countryside. Within easy walking distance to the village amenities and countryside walks on your doorstep. This spacious property boasts off road parking and garage. Enter the property to hallway leading to dual aspect lounge with feature fireplace and kitchen/dining room with patio doors leading out to the enclosed rear garden, downstairs wc, to the first floor are four bedrooms with the master having en-suite shower room and family bathroom. To the front is a lovely enclosed garden with views over open countryside and private rear garden enclosed with brick wall. Viewing is highly recommended to appreciate the location of this village property.

🛏 4 🚽 2 🛋 2

Price: £355,000



Woodford is a small village with shop, pub, school, doctors etc. Lovely countryside walks and close to the market town of Thrapston offering many more facilities.

The new Rushden Lakes development is approximately 20 minutes drive offering many recreational facilities to include, shops, restaurants, cinema and countryside walks.

Kettering is approximately 15 minutes drive offering many services and train links to the capital in under an hour.



Offices at:

Thrapston
01832 731222

Kettering
01536 518200

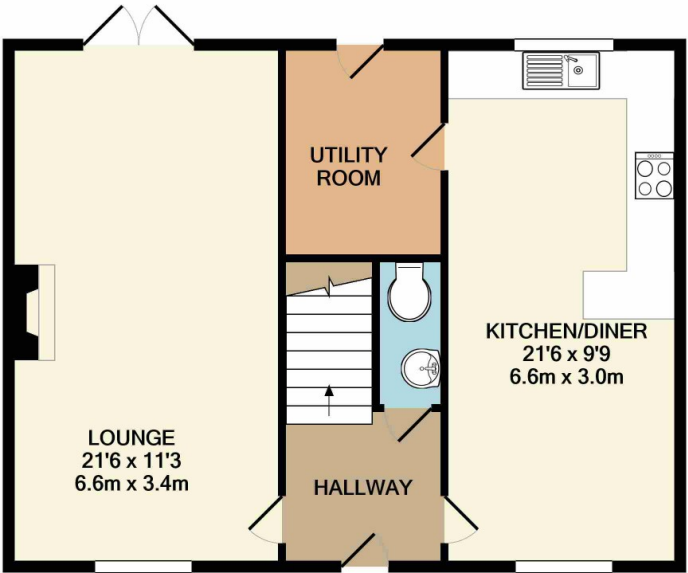
Burton Latimer
01536 722355

Corby
01536 202007

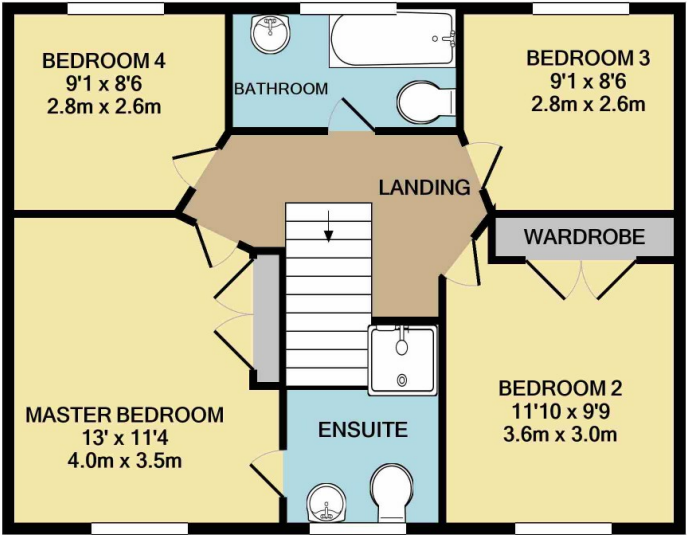
Wellingborough
01933 224953

Rushden
01933 418917

Northampton
01604 590888



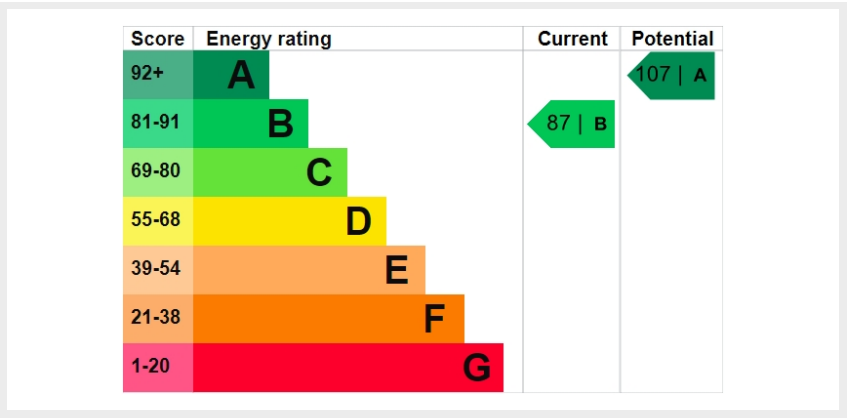
GROUND FLOOR
APPROX. FLOOR
AREA 594 SQ.FT.
(55.2 SQ.M.)

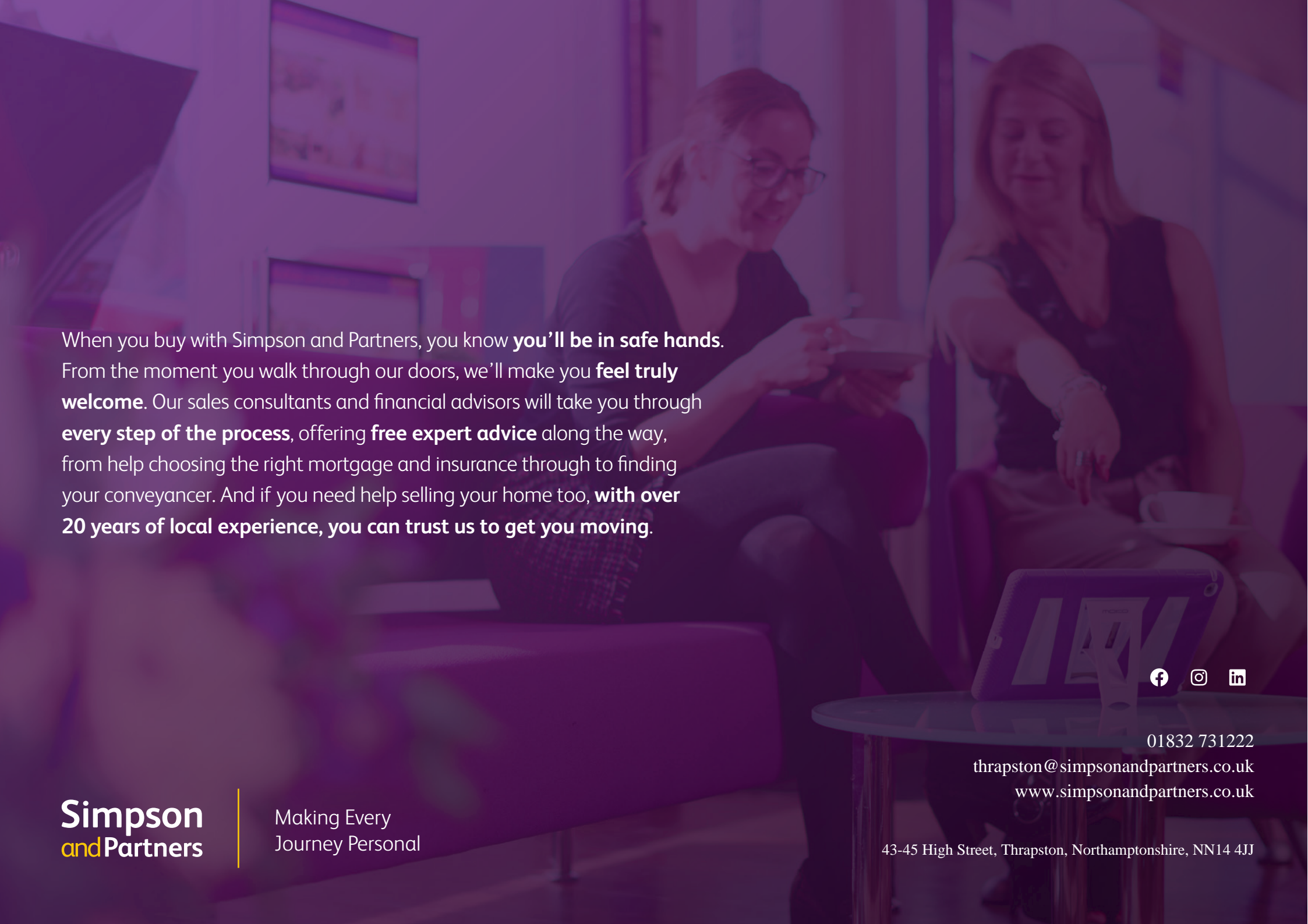


1ST FLOOR
APPROX. FLOOR
AREA 593 SQ.FT.
(55.0 SQ.M.)

TOTAL APPROX. FLOOR AREA 1187 SQ.FT. (110.3 SQ.M.)

Whilst every attempt has been made to ensure the accuracy of the floor plan contained here, measurements of doors, windows, rooms and any other items are approximate and no responsibility is taken for any error, omission, or mis-statement. The plan is copyright to Simpson and Partners and is for illustrative purposes and should only be used as such by any prospective purchaser. The services, systems and appliances shown have not been tested and no guarantee as to their operability can be given.
Made with Metropix ©2021





When you buy with Simpson and Partners, you know **you'll be in safe hands**. From the moment you walk through our doors, we'll make you **feel truly welcome**. Our sales consultants and financial advisors will take you through **every step of the process**, offering **free expert advice** along the way, from help choosing the right mortgage and insurance through to finding your conveyancer. And if you need help selling your home too, **with over 20 years of local experience, you can trust us to get you moving**.

**Simpson
and Partners**

Making Every
Journey Personal



01832 731222

thrapston@simpsonandpartners.co.uk

www.simpsonandpartners.co.uk

43-45 High Street, Thrapston, Northamptonshire, NN14 4JJ