

# HUNTERS®

HERE TO GET *you* THERE



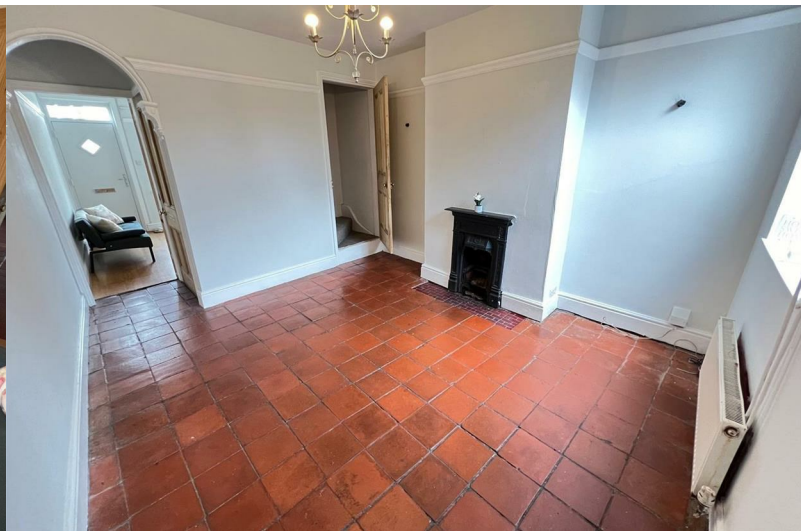
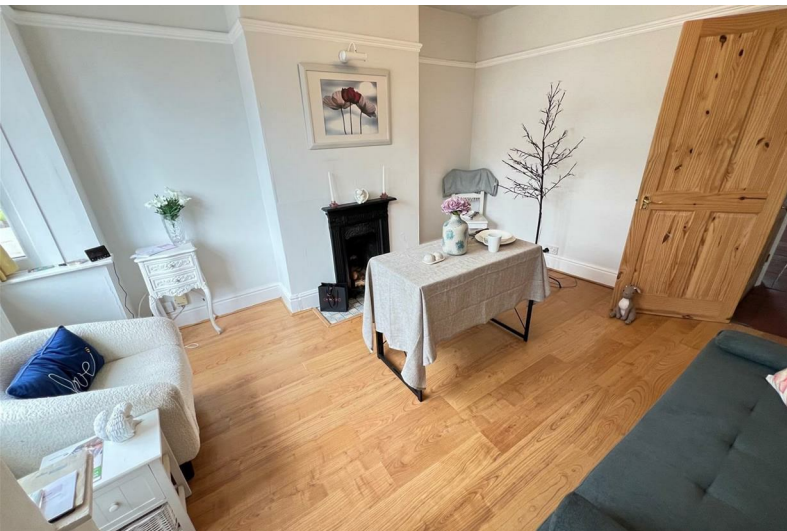
## Corser Street

Stourbridge, DY8 2DE

Offers Over £270,000



Council Tax: B



# Corser Street

Stourbridge, DY8 2DE

Offers Over £270,000



## Front Of The Property

With a garden wall, path to front door, decorative chipping stones and gate to side entry.

## Dining Room

With a double glazed door to front, double glazed bay window to front, original open fire surround and tiled hearth, picture rail, recessed spotlights and a central heating radiator.

## Lounge

12'5" x 11'1" (3.8 x 3.4)

With a door from the dining room, doors to rooms, original open fire surround and quarry tiled floor, stairs to the first floor landing, double glazed window to rear and a central heating radiator.

## Kitchen

13'11" x 7'4" (4.26 x 2.26)

With a door from the lounge, fitted with wall and base units, tiled splashback, stainless steel sink and drainer, space for coker, integrated extractor fan, plumbing for dishwasher, space for further kitchen appliances, cupboard housing boiler, double glazed window to rear, double glazed door to rear and a door to the shower room,.

## Shower Room

With a door from the kitchen, walk in shower cubicle, WC, wash hand basin, part tiled walls, tiled floor, skylight window, two double glazed windows to side and a central heating radiator.

## Cellar

11'9" x 10'10" (3.6 x 3.32)

With a door and stairs from the lounge, double glazed window to front, recessed spotlights and a central heating radiator.

## Landing

With stairs from the lounge, and doors to rooms.

## Bedroom One

12'0" x 13'10" (3.66 x 4.24)

With a door from the landing, built in wardrobes, storage cupboard, two double glazed windows to front and a central heating radiator.

## Bedroom Two

12'5" x 11'2" (3.8 x 3.42)

With a door from the landing, stairs to loft area, double glazed window to rear and a central heating radiator.

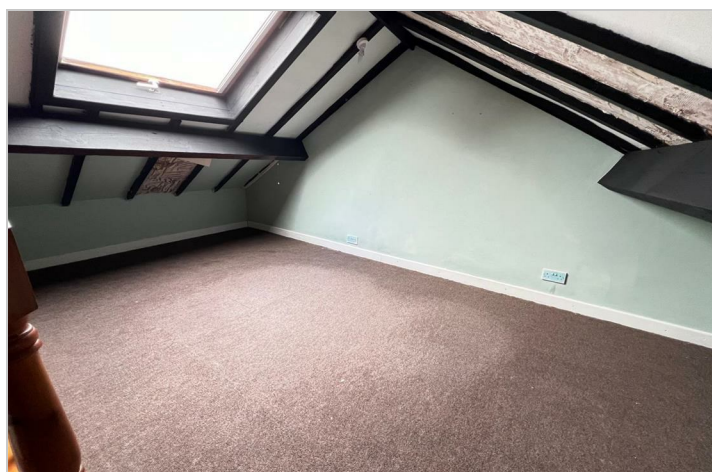
## Loft Area

14'9" x 14'9" (4.5 x 4.5)

With stairs from bedroom two, useful space with skylight window to rear, power and light.

## Garden

With a double glazed door from the kitchen, path to lawn, shrub borders, patio seating area, outside tap and gate to side entry.



## Road Map



## Hybrid Map



## Terrain Map



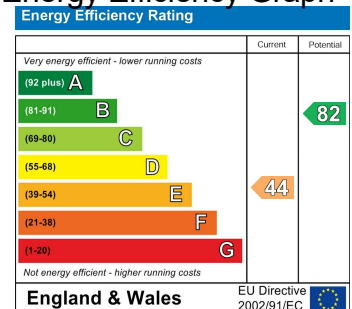
## Floor Plan



## Viewing

Please contact our Hunters Stourbridge Office on 01384 443331 if you wish to arrange a viewing appointment for this property or require further information.

## Energy Efficiency Graph



These particulars are intended to give a fair and reliable description of the property but no responsibility for any inaccuracy or error can be accepted and do not constitute an offer or contract. We have not tested any services or appliances (including central heating if fitted) referred to in these particulars and the purchasers are advised to satisfy themselves as to the working order and condition. If a property is unoccupied at any time there may be reconnection charges for any switched off/disconnected or drained services or appliances - All measurements are approximate. **THINKING OF SELLING?** If you are thinking of selling your home or just curious to discover the value of your property, Hunters would be pleased to provide free, no obligation sales and marketing advice. Even if your home is outside the area covered by our local offices we can arrange a Market Appraisal through our national network of Hunters estate agents.