

HUNTERS[®]

HERE TO GET *you* THERE



Queen Street

Kingswinford, DY6 7AQ

£290,000



Javar Queen Street

Kingswinford, DY6 7AQ

£290,000



Front Of The Property

With a tarmac driveway to front, lawn, up and over door to garage, door to sun room and a door to the porch.

Porch

With a door from the front, double glazed windows and double glazed door to entrance hall.

Entrance Hall

With a double glazed door from the porch, stairs to the first floor landing, doors leading to various rooms and a central heating radiator.

Lounge

13'1" x 10'11" (into bay) (4.01 x 3.33 (into bay))

With a door from the entrance hall, media wall, electric fire with tiled surround and marble hearth, double glazed bay window to front and a central heating radiator.

Dining Room

9'10" x 11'1" (3 x 3.4)

With a door leading from the entrance hall, double glazed window to rear and a central heating radiator.

Kitchen Utility

11'10" x 5'6" (3.62 x 1.69)

With a door from the entrance hall, fitted with a range of wall and base units, work surfaces, storage cupboard, part tiled walls, integrated oven, plumbing for dishwasher and a double glazed window to rear, opening to the utility with fitted wall and base units, plumbing for washing machine, space for tumble dryer, stainless steel sink and drainer, tiled walls, double glazed window to rear and a double door to sunroom.

Sunroom

With a door leading from the utility, door to front, tiled floor and doors leading to garden.

Garden

With a door leading from the sun room, block paved patio, gate leading to lawn area and garden shed.

Garage

With an up and over door to front, power and light.

Landing

With stairs leading from the entrance hall, doors leading to various rooms and a double glazed window to side.

Bedroom One

9'6" x 10'11" (2.90 x 3.34)

With a door leading from the landing, double glazed window to rear and a central heating radiator.

Bedroom Two

8'8" front of wardrobe x 10'10" (2.66 front of wardrobe x 3.31)

With a door leading from the landing, double glazed window to front and a central heating radiator.

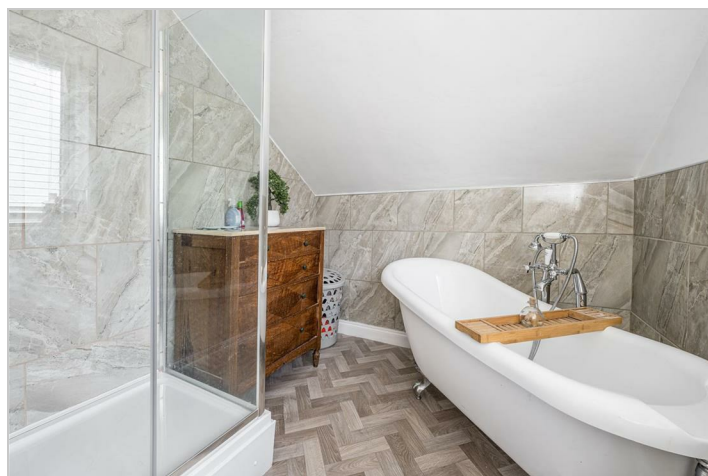
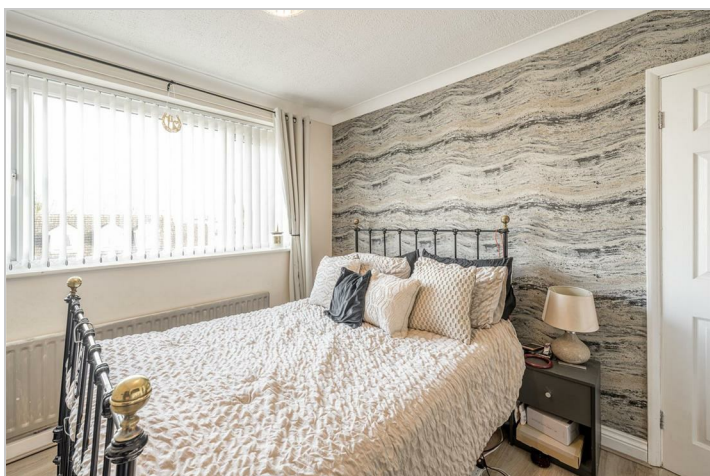
Bedroom Three

10'10" x 9'4" (3.31 x 2.85)

With a door from the landing, double glazed window to front and a central heating radiator.

Bathroom

With a door from the landing, double glazed window to rear, tiled walls, WC, wash hand basin, bath, walk in shower cubicle with waterfall shower head and a chrome heated towel rail.



Road Map



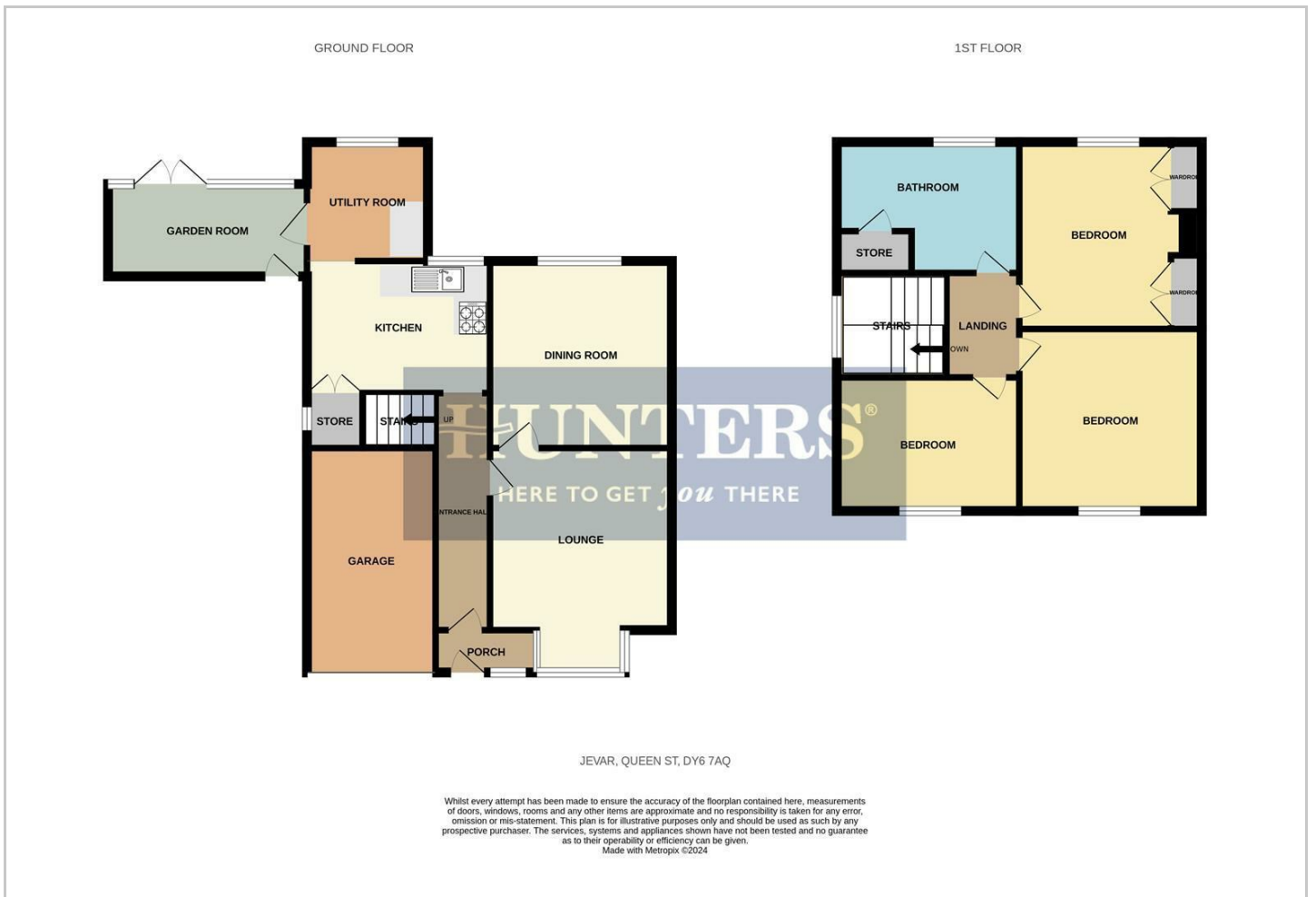
Hybrid Map



Terrain Map



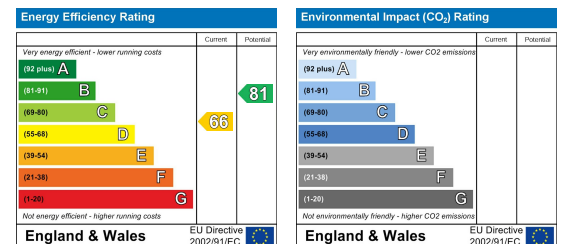
Floor Plan



Viewing

Please contact our Hunters Stourbridge Office on 01384 443331 if you wish to arrange a viewing appointment for this property or require further information.

Energy Efficiency Graph



These particulars are intended to give a fair and reliable description of the property but no responsibility for any inaccuracy or error can be accepted and do not constitute an offer or contract. We have not tested any services or appliances (including central heating if fitted) referred to in these particulars and the purchasers are advised to satisfy themselves as to the working order and condition. If a property is unoccupied at any time there may be reconnection charges for any switched off/disconnected or drained services or appliances - All measurements are approximate. **THINKING OF SELLING?** If you are thinking of selling your home or just curious to discover the value of your property, Hunters would be pleased to provide free, no obligation sales and marketing advice. Even if your home is outside the area covered by our local offices we can arrange a Market Appraisal through our national network of Hunters estate agents.