



37 Redvers Way, Tiverton, EX16 6XL
£220,000

A lovely two bedroom mid terrace house within a quiet cul-de-sac, close to local amenities benefiting from an enclosed garden and gas central heating.

Description

Situated in a serene cul-de-sac within the highly desirable Moorhayes development, this lovely two-bedroom semi-detached house offers contemporary living in a tranquil environment.

The ground floor features a stylish fitted kitchen with ample storage space, a handy downstairs cloakroom, and a light-filled lounge with a door leading to the rear garden.

Upstairs, there are two spacious bedrooms equipped with double fitted wardrobes and a family bathroom with a shower over the bath.

Outside, the property features a private carport for parking, a newly refurbished rear garden with a charming patio area and easy-to-maintain artificial grass, as well as a shed for additional storage needs. With gas central heating and double glazing throughout, this home ensures both comfort and efficiency throughout the seasons.

Tiverton

Tiverton is a market town in Mid Devon with a wide range of amenities, with a range of shops, recreational and educational facilities, as well as superb travel links to Exeter and Taunton via the North Devon link road, the M5 accessible from here via junction 27.

Services

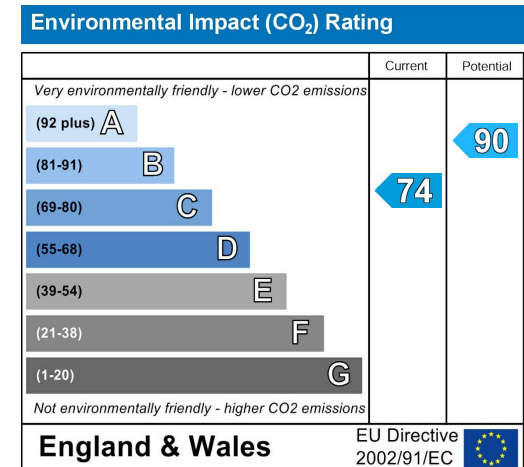
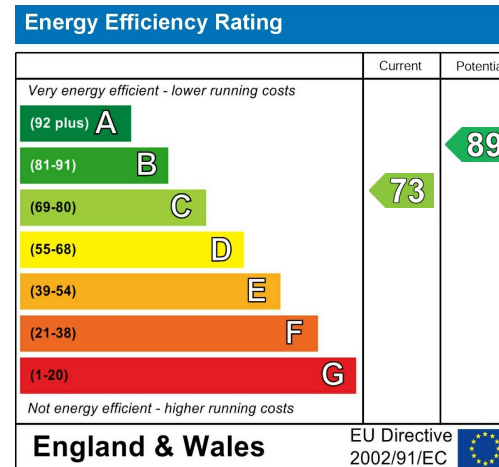
- All Mains Connected
- Council Tax Band B
- Freehold
- Two Allocated Parking Spaces
- Broadband Speed:
 - Standard: 12mbps
 - Superfast: 80mpbs
 - Utlarafast: 1000mbps

Sales enquiries

If you have any enquiries, please do not hesitate to contact the office on 01884 257997 or email us at sales@weldenedwards.co.uk.

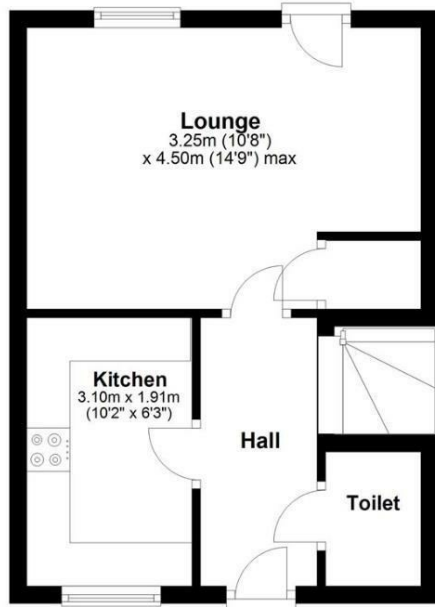
Disclaimer

Whilst every attempt has been made to ensure our sales particulars are accurate and reliable, they are only a general guide to the property, and accordingly, if there is any point which is of particular importance to you, please contact the office and we will be pleased to clarify the position for you.



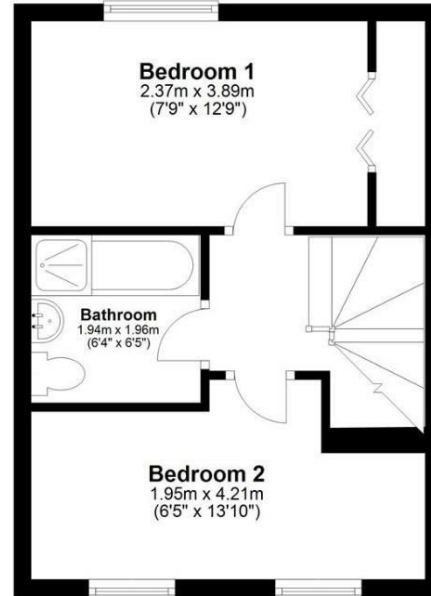
Ground Floor

Approx. 27.0 sq. metres (290.5 sq. feet)



First Floor

Approx. 28.4 sq. metres (305.8 sq. feet)



Total area: approx. 55.4 sq. metres (596.2 sq. feet)

This plan is for guidance only and is not to be relied upon. Measurements are approximate.
Plan produced using PlanUp.



