

36 Thomas Place, Wellington, TA21 8FA

£1,495 PCM

A large four bedroom property in the Wellington area. The property boasts a large attached garage, driveway with parking for 2 cars, gas central heating, utility area with door to garage, spacious kitchen/diner and two ensuite shower rooms and family bathroom.

Property Description

A stunning 4 bedroom detached property located on the popular Longforth Farm area in Wellington. This property is an ex show home and is therefore presented to a high standard the property comprises of a large attached Garage, Driveway parking for 2 cars, Gas Central Heating, Utility Area, Large Kitchen/Diner and 2 En-Suites.

Wellington

Wellington is a town close to Taunton with many local amenities and easy access to the M5. There is a selection of supermarkets, independent shops, a cinema and a farmers market.

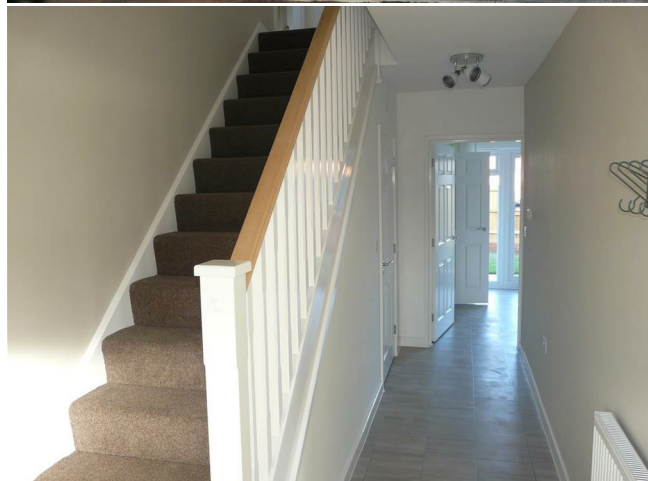
Lettings enquiries

If you have any enquiries, please do not hesitate to contact the office on 01884 257997 or email us at lettings@weldenedwards.co.uk.

Disclaimer

Whilst every attempt has been made to ensure our sales particulars are accurate and reliable, they are only a general guide to the property, and accordingly, if there is any point which is of particular importance to you, please contact the office and we will be pleased to clarify the position for you.

- Four bedrooms, two with ensembles
- Spacious entrance hall
- Downstairs cloakroom
- Large kitchen/diner
- Family bathroom
- Utility area with access to garage
- Enclosed rear garden
- Garage & driveway
- Council tax band E
- EPC rating B



Energy Efficiency Rating		Current	Potential
Very energy efficient - lower running costs			
(92 plus) A			96
(81-91) B		83	
(69-80) C			
(55-68) D			
(39-54) E			
(21-38) F			
(1-20) G			
Not energy efficient - higher running costs			
England & Wales	EU Directive 2002/91/EC		

Environmental Impact (CO ₂) Rating		Current	Potential
Very environmentally friendly - lower CO ₂ emissions			
(92 plus) A			
(81-91) B			
(69-80) C			
(55-68) D			
(39-54) E			
(21-38) F			
(1-20) G			
Not environmentally friendly - higher CO ₂ emissions			
England & Wales	EU Directive 2002/91/EC		