

Tavistock, PL19 8FP

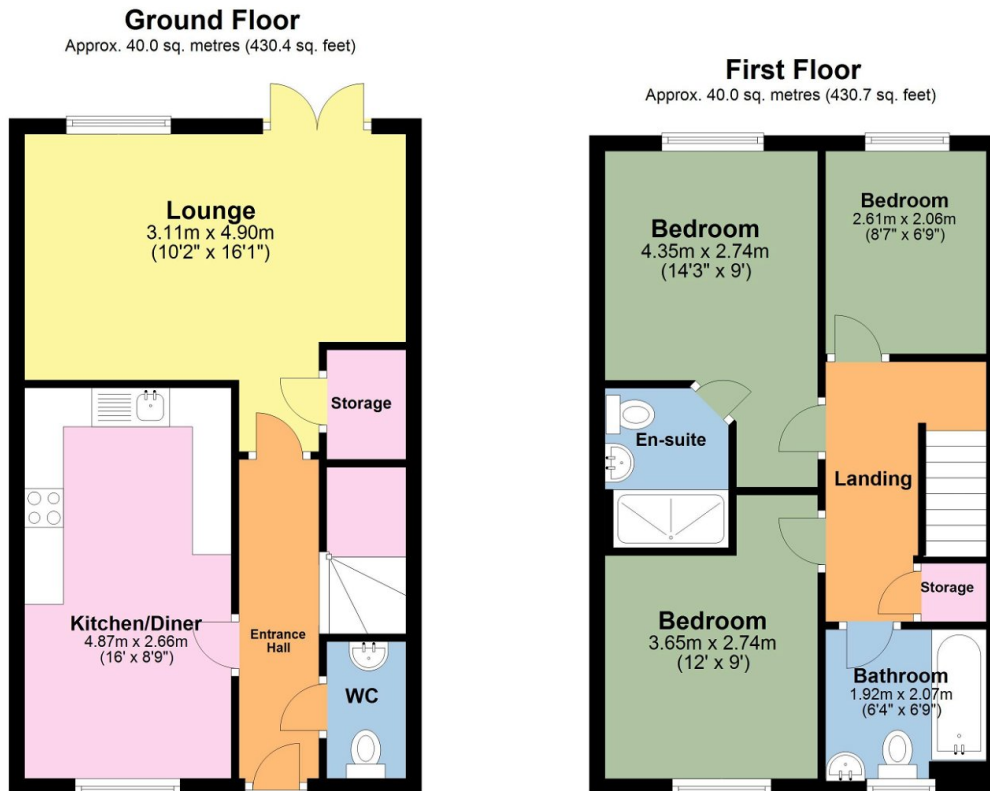
Offers In Region Of £325,000

3 2 1



Set within a new build development on the northwest edges of the historic market town of Tavistock and surrounded by countryside is this stylish semi-detached home. Offering comfortable living for couples and families, this 3 bedroom property boasts spacious accommodation with a fully fitted shaker style, quality kitchen with dining area, a lounge that overlooks the garden with French doors that provide access to the patio and a lawned garden.

- Semi Detached New build Home
- Three Bedrooms
- Master ensuite
- Family bathroom
- Stylish Fully Fitted Kitchen with integrated appliances
- Kitchen/dining area
- Lounge overlooking patio area and lawned garden
- French doors to enclosed rear garden
- Downstairs cloakroom
- Off Road Parking for several vehicles



Total area: approx. 80.0 sq. metres (861.1 sq. feet)

These are appropriate dimensions.
Plan produced using PlanUp.