



Salisburys

Dousland, Yelverton, PL20 6LU

Offers In Region Of £865,000

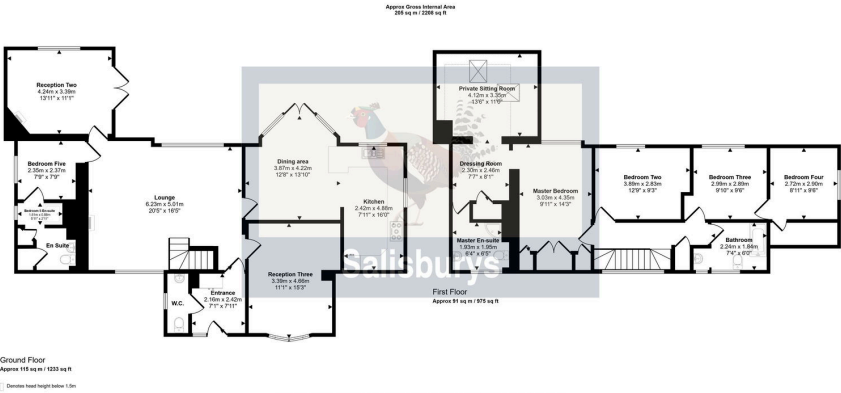
🛏 4 🍳 3 🛋 4



- Stunning Detached Family Home
- Extremely Desirable Location
- Flexible Living Accommodation
- Beautiful lawned gardens
- Alto Interiors quality fitted Kitchen
- Master Bedroom Suite with Dressing Room/En-Suite/Private Sitting Room
- 3 further double bedrooms
- Feature French doors onto extensive decking area
- Immaculately presented
- Driveway parking with single garage



This rarely available and simply stunning family home is situated within the DNP close to Burrator which offers a huge range of activities for lovers of the great outdoors. The handsome early 20th Century Lodge provides flexible accommodation with downstairs offering a central "heart of the home" Lounge and three receptions rooms (one ensuite) and additional w.c. Adjacent to the Lounge is a beautiful Dining area with a luxurious open plan kitchen, both of which overlook the decked Sun Terrace with far reaching uninterrupted views across. Upstairs are four bedrooms with Family Bathroom and luxury Master Suite with Bedroom, Ensuite, Dressing Room and private Sitting Room. Externally the property has beautiful lawned south westerly grounds with a range of mature shrubs, additional seating areas and a large summer house. The Lodge has a detached garage and parking for several vehicles. A stunning home, fabulous location and set within beautiful grounds!



Score	Energy rating	Current	Potential
92+	A		
81-91	B		
69-80	C		71 C
55-68	D		
39-54	E	49 E	
21-38	F		
1-20	G		

