



Salisburys

Russell Court, PL19.

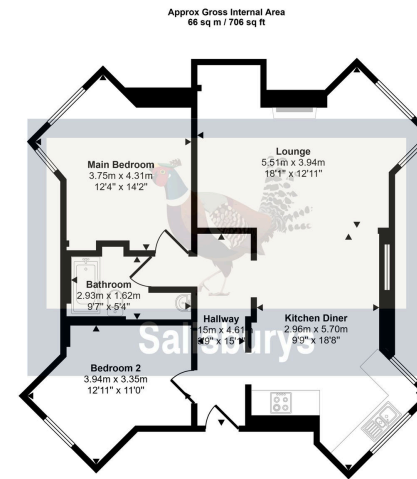
Offers In Region Of £165,000

2 1 1



- First floor apartment
- Surprisingly spacious
- Open plan kitchen/Living area
- Walking distance to Tavistock town centre
- Communal gardens
- Two double bedrooms
- Gas central heating
- Open aspect to front
- Family bathroom
- Unallocated parking spaces + visitors





Floorplan

This floorplan is only for illustrative purposes and is not to scale. Measurements of rooms, doors, windows, and any items are approximate and no responsibility is taken for any error, omission or mis-statement. Icons of items such as bathroom suites are representations only and may not look like the real items. Made with Made Snappy 360.

A well presented, first floor apartment located in the tranquil grounds of Russell Court with private parking. This property has two bedrooms, a spacious kitchen / living space, a family bathroom and a spacious hallway. The stylishly tiled entrance hall leads into the well equipped, modern kitchen all finished to an excellent standard. Leading through to the dining area with views to the front of the building. This home benefits from a comfortable lounge area featuring a gas fireplace. The two bedrooms, quietly located to the rear of the property, benefits from ample storage and office space. The family bathroom includes a bath/shower, chrome towel rail and plenty of storage space. The cleverly designed hallway also benefits from further storage. Russell Court is set in well established grounds with communal gardens available to residents. This is a fantastic opportunity to buy a cleverly designed apartment,

Score	Energy rating	Current	Potential
92+	A		
81-91	B		
69-80	C		79 C
55-68	D		
39-54	E	54 E	
21-38	F		
1-20	G		

