



Calstock Road, Gunnislake. PL18

Offers Over £565,000

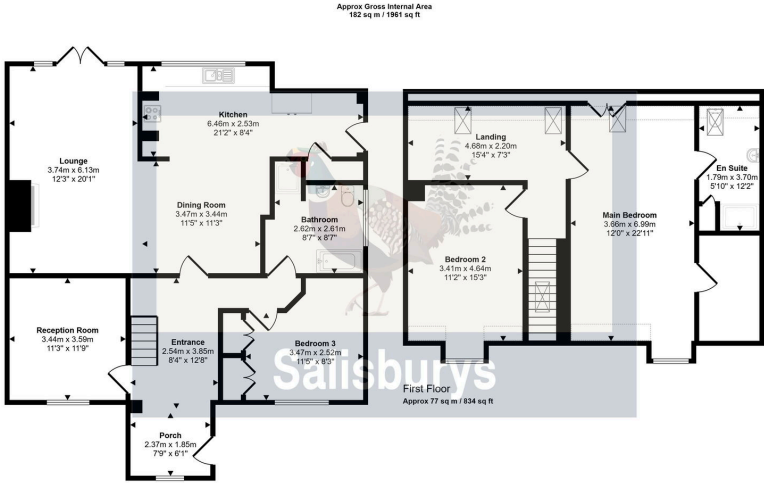
🛏 4 🚿 2 🚗 1



- Stunning contemporary 4 bedroom home
- Open plan living space with multi fuel stove
- Downstairs bathroom
- Fully enclosed, easterly facing garden
- Tranquil village location with amenities and train station
- Remodelled to an exceptionally high standard
- Ensuite Master bedroom
- Fantastic views of the Tamar Valley
- Single garage and parking for several vehicles
- Easy access to Dartmoor and the coast



Offering the opportunity for multi-generational living, this exceptional Contemporary Home is beautifully presented with stunning Tamar Valley Views. Remodelled to the highest standards, this detached home boasts breath-taking panoramic views over the Tamar Valley. Designed for modern living, the light-filled open-plan living, dining, and kitchen area is the heart of the home, featuring floor-to-ceiling windows that open onto a spacious balcony with a hot tub—perfect for unwinding while soaking in the views. The property offers two bedrooms and a bathroom on the ground floor and a luxury master bedroom (with en-suite and dressing room) and further bedroom on the first floor. A sleek, contemporary family bathroom completes the accommodation. Additional highlights include a large storage/utility area, a single garage, and generous driveway parking. The rear garden is fully enclosed and a must-see for those seeking modern luxury in an unrivalled setting.



Ground Floor
Approx 105 sq m / 1127 sq ft

Denotes head height below 1.5m

This floorplan is only for illustrative purposes and is not to scale. Measurements of rooms, doors, windows, and any items are approximate and no responsibility is taken for any error, omission or mis-statement. Icons of items such as bathroom suites are representations only and may not look like the real items. Made with Made Drafty 360.

| Score | Energy rating | Current | Potential |
|-------|---------------|---------|-----------|
| 92+ | A | | |
| 81-91 | B | | |
| 69-80 | C | | |
| 55-68 | D | 56 D | 65 D |
| 39-54 | E | | |
| 21-38 | F | | |
| 1-20 | G | | |

