






Salisburys

St. Giles-on-the-Heath, Launceston, PL15 9RT

Offers In Region Of £395,000

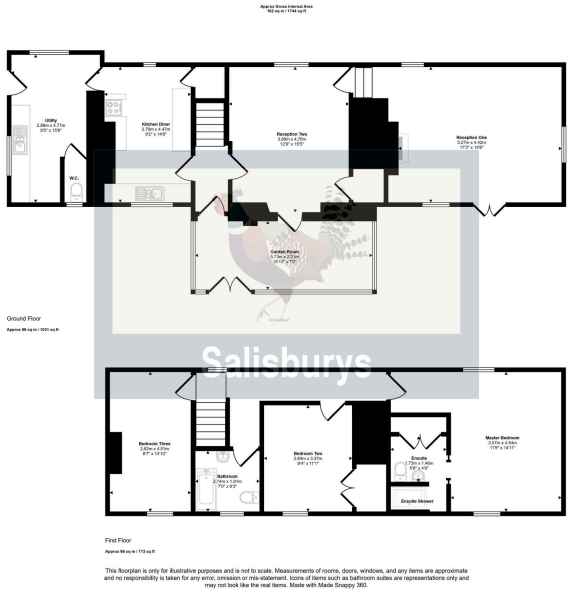
 3  2  3



- Spacious detached cottage
- 3 bedrooms/2 bathrooms
- Kitchen with large Utility Room
- Driveway, double Garage with workshop
- Close to local amenities
- Superb views over countryside
- Garden Room
- Level lawned garden
- 360 Virtual Tour
- CHAIN FREE



Charming countryside 3-bedroom character cottage with scope to improve – no onward chain. We're delighted to present this beautifully spacious character cottage, full of charm and offering a wealth of features inside and out. Perfectly positioned to enjoy open countryside views, this home is truly a rare find. The accommodation briefly includes: three double bedrooms, including a master with en-suite shower, a family bathroom, two reception rooms, a well-appointed kitchen, a generous utility room, downstairs W.C., and a garden room that showcases the stunning rural outlook. Outside, the property offers driveway parking for multiple vehicles, a double garage with attached workshop, and level lawned gardens with two separate seating areas—perfect for relaxing or entertaining. Spacious, full of character, and offered with no onward chain, this wonderful home is not to be missed.



Score	Energy rating	Current	Potential
92+	A		93 A
81-91	B		
69-80	C		
55-68	D		
39-54	E	43 E	
21-38	F		
1-20	G		

