



Salisburys

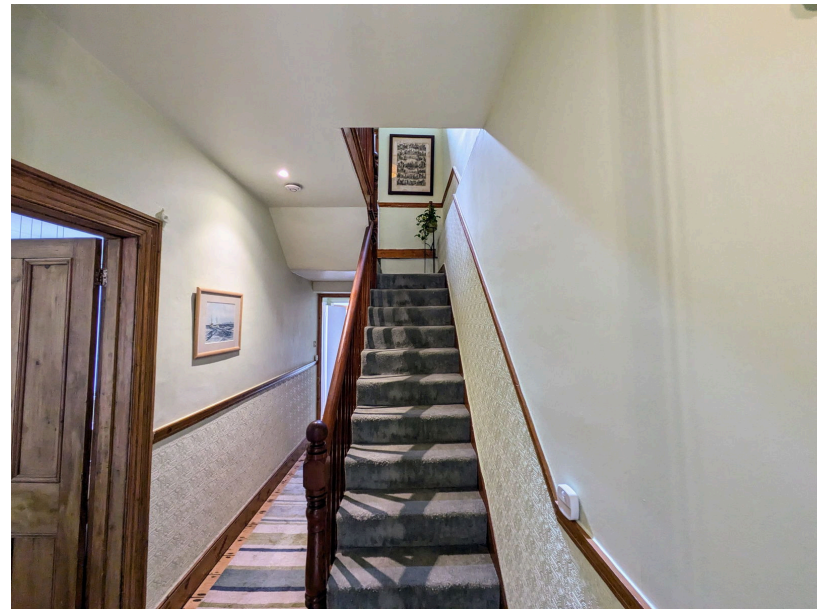
# Whitchurch Road, Tavistock, PL19 9DE

Offers In Region Of £485,000

🛏️ 4 🚿 1 🚗 3



- Substantial Victorian property • Four double bedrooms
- Prime Whitchurch Road location
- Well proportioned accommodation
- Garden room/annexe with French doors with potential for multi-generational living
- Walking distance to Tavistock centre
- Spacious and full of stylish character
- Wealth of original features
- Panoramic views
- Close to Whitchurch Primary School



A fantastic opportunity to purchase a spacious family home in the highly desirable Whitchurch Road area of Tavistock. This very well presented 4 bedroom property offers substantial and spacious accommodation with many original features. The accommodation briefly comprises of 4 double bedrooms, Family bathroom, generous through Lounge/Dining Room, contemporary Kitchen/Breakfast Room, separate w.c., a ground floor annexe, rear garden with raised patio area and a Summer House. Very well presented throughout and not to be missed.



Score	Energy rating	Current	Potential
92+	A		
81-91	B		
69-80	C		79 C
55-68	D	61 D	
39-54	E		
21-38	F		
1-20	G		

