

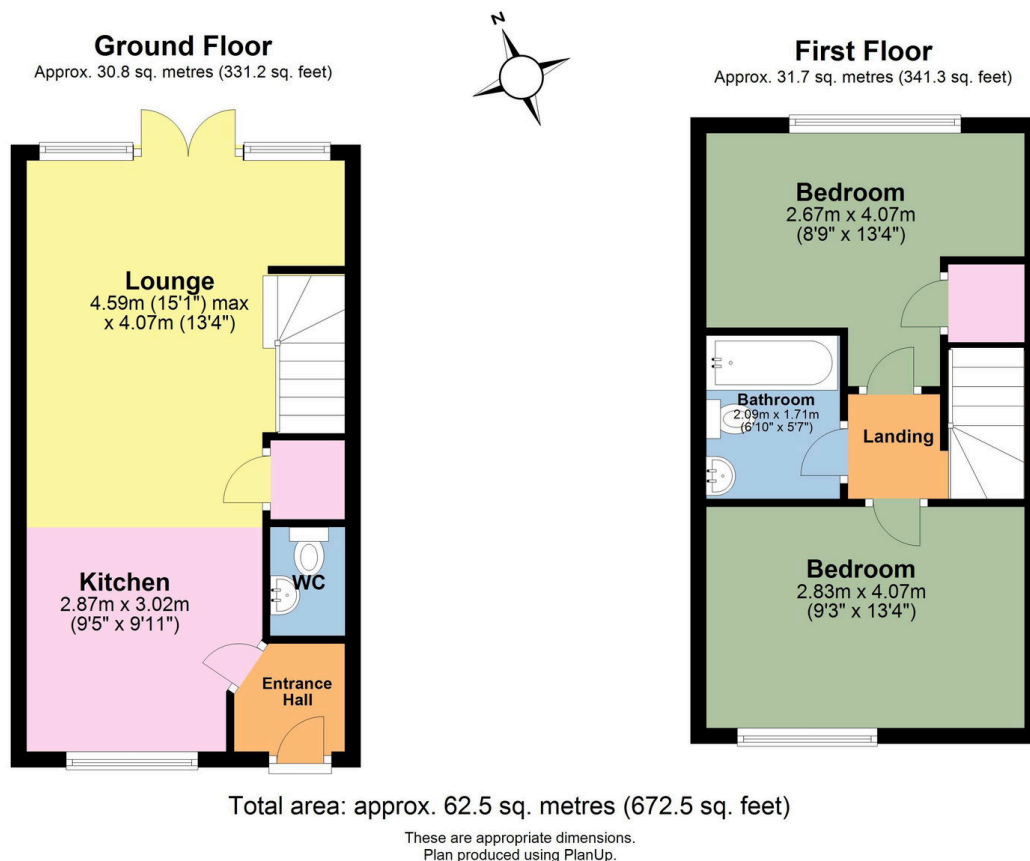
Staple Tor Road, PL19 8FY

Offers In Region Of £245,000

🛏️ 2 🚿 1 🛋️ 1



- Very well presented 2 bedroom terraced house
- Built in 2020 by Bovis Homes
- Garage and parking
- Two double bedrooms
- Well appointed family bathroom
- Quality fitted kitchen
- Open plan lounge/diner
- Enclosed lawned garden
- Patio area
- CHAIN FREE



This very well presented mid terraced property was originally built in 2020 by Bovis Homes and is offered to the market CHAIN FREE and ready to move into. The accommodation briefly comprises of a front vestibule with downstairs w.c with white sanitary ware and an open plan stylish kitchen/living/dining room with French doors opening onto a patio area and part lawned garden including a garden shed. Upstairs there are two double bedrooms, the Master with a useful storage cupboard and a well appointed Family Bathroom with contemporary white



sanitary ware with bath and overhead shower. Externally the property has the additional benefit of an off road parking space in front of a single garage which can be accessed through the garden.