

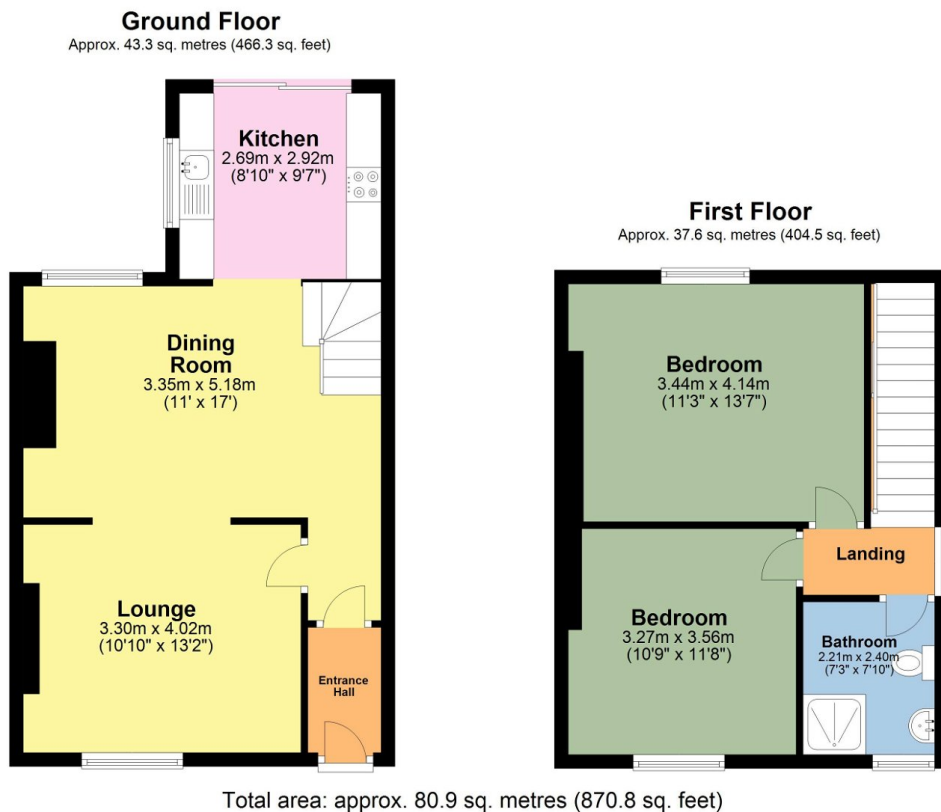
Parkwood Road, Tavistock, PL19 0HH

Offers In Region Of £249,000

🛏️ 2 🚿 1 🛋️ 2



- Attractive end of terrace period home
- Through lounge/dining room
- Family bathroom - modern white suite with electric shower
- Gated side access to rear
- Flat walk to Town and shops
- 2 good sized double bedrooms
- Well fitted kitchen with integrated appliances
- Double glazing throughout
- Patio doors to garden
- NO ONWARD CHAIN



These are appropriate dimensions.
Plan produced using PlanUp.

Located in a highly sought after residential road, an end of terrace, two bedroom Victorian property which is a short flat walk into the centre of Tavistock and it's many shops and cafes. The property which is neutrally decorated throughout, offers the benefit of a through Lounge/ Dining Room, a separate kitchen with patio doors to the rear and integrated appliances, two good sized double bedrooms and a large Family Bathroom. Externally, the rear garden offers both a

lawned area and a patio with a useful storage shed to the side. The garden can also be accessed through a gated side entrance from the front.