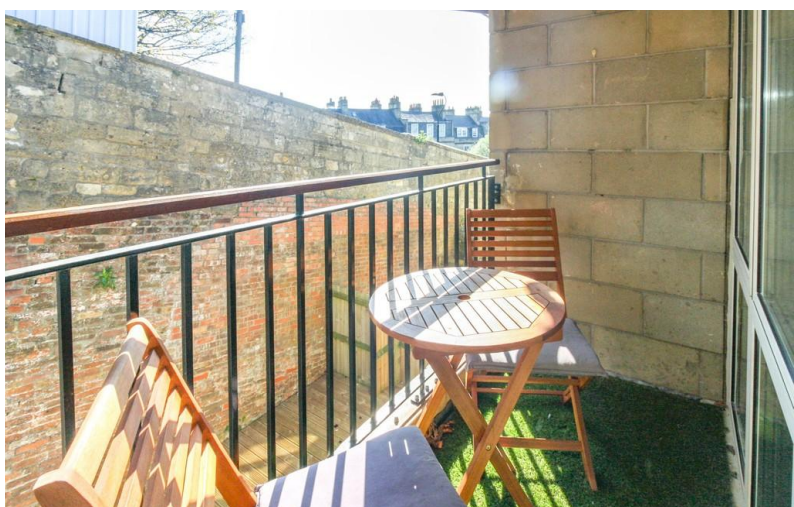


**TO LET**



## **Camden Row, Bath**

**1 Bedroom, 1 Bathroom, Apartment**

**£850 pcm**



## Camden Row, Bath

Apartment,  
1 bedroom, 1 bathroom

£850 pcm

Date available: Available Now

Deposit: £980.76

Furnished

Council Tax band:

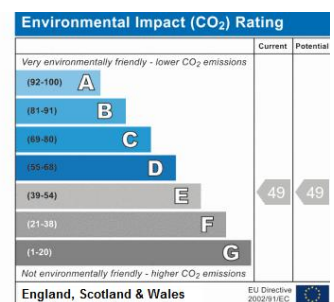
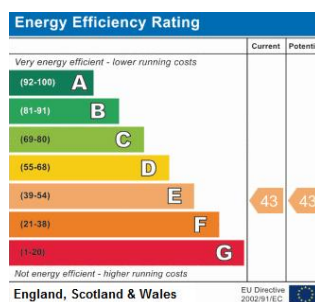
- Modern, Light and Spacious Apartment
- Private Balcony
- Lower Slopes of Lansdown
- Quiet Location
- Large open plan living
- Double Bedroom
- Well equipped kitchen

## FULL DESCRIPTION

A spacious one bed FURNISHED apartment located in the popular Lansdown area. This light and bright property is maintained to a high standard and comprises - Large open plan living/dining room with large floor to ceiling windows and door leading to the BALCONY.

Modern, well equipped kitchen with wooden flooring, complete with white goods including dishwasher and washer/drier. Large double bedroom with fitted cupboards. Fully tiled bathroom - smart 3 piece white suite with shower over bath.

Electric heating and generous storage space. No parking.

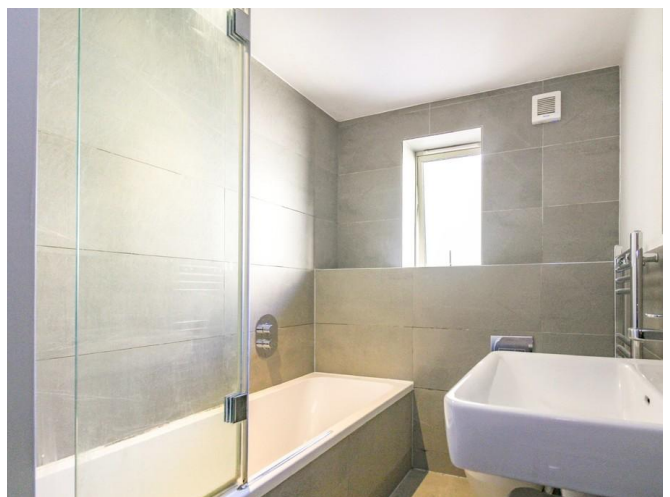






**LOCATION** The apartment is located on the lower slopes of Lansdown.

Tucked away in a quiet location, yet within easy walk of the bright lights of Bath City Centre, with the array of shops, bars and restaurants.



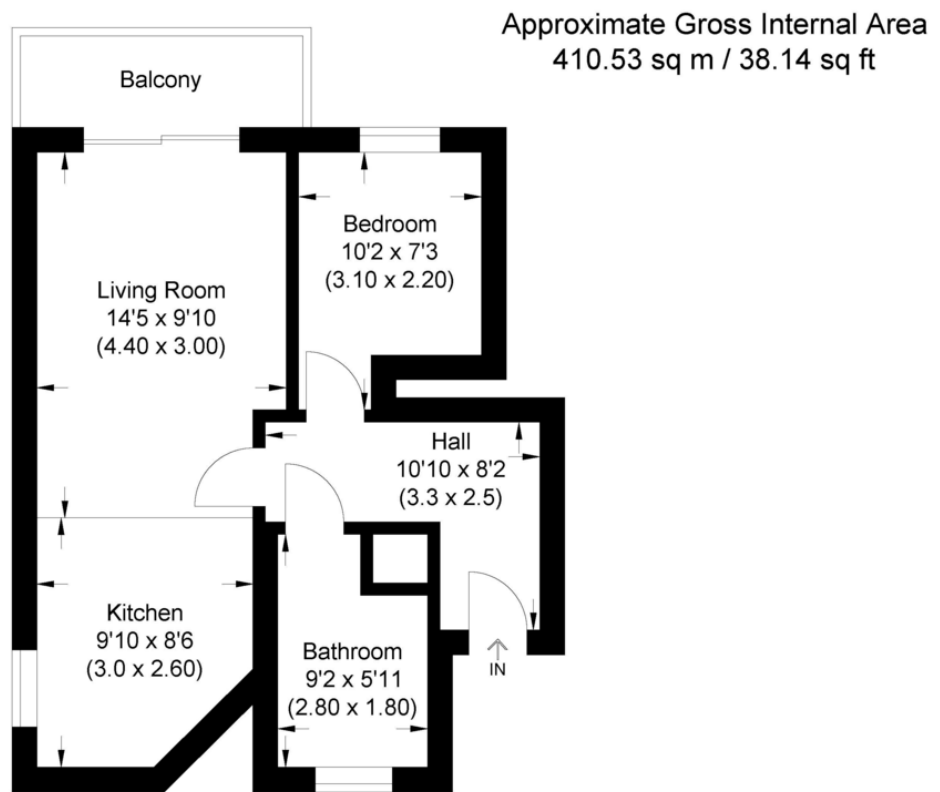


Illustration for identification purposes only, measurements are approximate, not to scale.

## Martin & Co Bath

1 Cleveland Terrace • Bath • BA1 5DF  
T: 01225 429999 • E: bath@martinco.com

**01225 429999**  
<http://www.martinco.com>



**Accuracy:** References to the Tenure of a Property are based on information supplied by the Seller. The Agent has not had sight of the title documents. A Buyer is advised to obtain verification from their Solicitor. Items shown in photographs including but not limited to carpets, fixtures and fittings are not included unless specifically mentioned within the sales particulars. They may however be available by separate negotiation. Buyers must check the availability of any property and make an appointment to view before embarking on any journey to see a property. No person in the employment of the agent has any authority to make any representation about the property, and accordingly any information given is entirely without responsibility on the part of the agents, sellers(s) or lessors(s). Any property particulars are not an offer or contract, nor for m part of one. **Sonic / Laser Tape:** Measurements taken using a sonic / laser tape measure may be subject to a small margin of error. **All Measurements:** All Measurements are Approximate. **Services Not tested:** The Agent has not tested any apparatus, equipment, fixtures and fittings or services and so cannot verify that they are in working order or fit for the purpose. A Buyer is advised to obtain verification from their Solicitor or Surveyor.