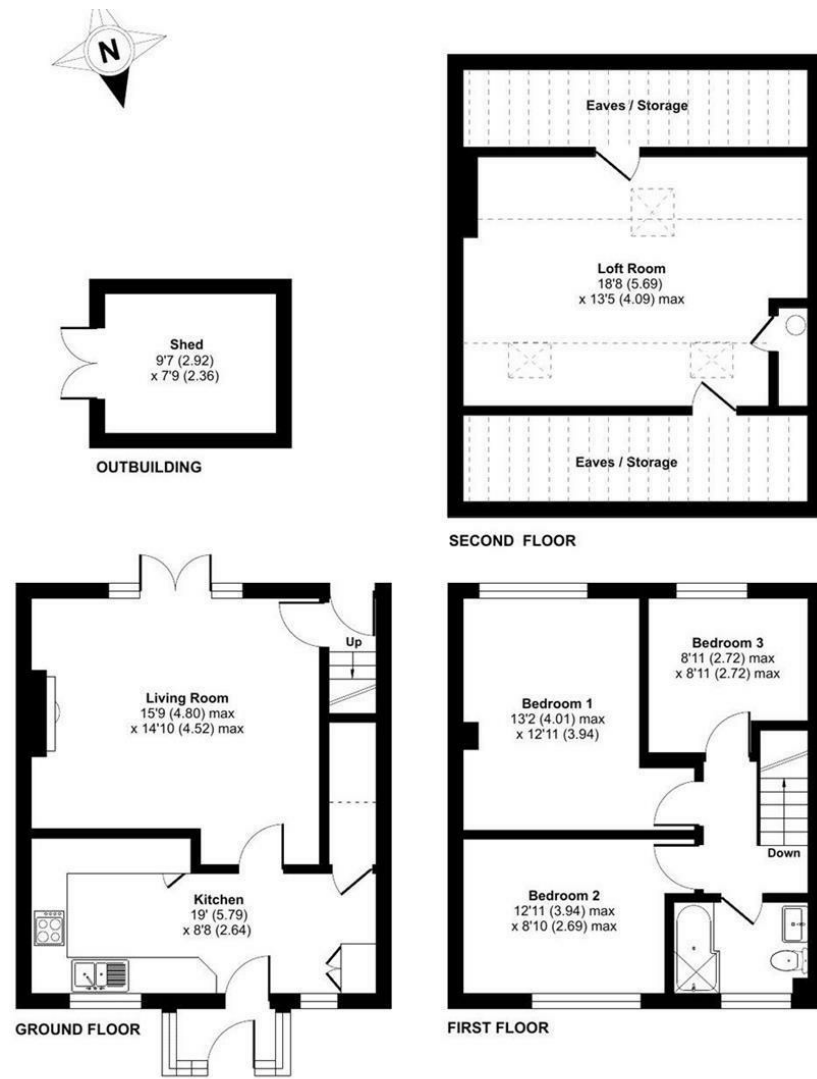


19 Bridgnorth Avenue, Wolverhampton, WV5 0AD



## 19 Bridgnorth Avenue, Wolverhampton



**Hicks Hadley**

13 Hagley Road  
Halesowen  
West Midlands  
B63 4PU

 0121 585 66 67

 sales@hickshadley.com

 <https://www.hickshadley.com>

\*\*\* THREE DOUBLE BEDROOMS with LOFT SPACE \*\*\* VIEWING HIGHLY RECOMMENDED \*\*\*CLOSE TO VILLAGE CENTRE AMENITIES \*\*\* SOUGHT AFTER LOCATION \*\*\*POPULAR SCHOOLS \*\*\* KITCHEN / DINER \*\*\* PRIVATE REAR GARDEN \*\*\* SUPERBLY PRESENTED – MOVE STRAIGHT IN \*\*\* CONVENIENT TRANSPORT LINKS \*\*\* POPULAR SCHOOLS \*\*\*

\*\*\* IMMACULATELY PRESENTED \*\*\* & Ideally Located, this Modern & Contemporary mid-terraced home has been Beautifully Refurbished throughout to a high standard. Accommodation to include Entrance Porch, Dining Kitchen with all fitted appliances, Living Room with French doors to the Garden, Three DOUBLE Bedrooms Bathroom, & Loft Room . Level & Enclosed Rear Garden, Double Glazed throughout & Gas Central Heating. Energy Rating C

**Asking Price £280,000 - Freehold**

**Hicks Hadley**



**Entrance Porch**

Alarmed residence with laminate flooring.

**Kitchen/Diner 19'0" x 8'8" (5.79m x 2.64m)**  
 Attractive & well-appointed - to include a matching range of wall and base units of cupboards and drawers. Ample work surfaces. Integrated appliances to include : fridge and freezer, BOSCH oven, 4 ring hob and microwave, dishwasher and washing machine. Extractor hood. One and a half bowl sink and drainer. Laminate flooring. Radiator. Under Stairs Cupboard for additional storage . Recessed spotlights. Windows to front elevation.

**Lounge 15'9"max x 14'10"max (4.80mmax x 4.52mmax)**  
 With feature decorative fireplace. French doors out to the garden. Laminate flooring & Radiator



**Rear Hall**

Door to garden. Laminate flooring. Radiator. A staircase up to the :

**First Floor Landing**  
 Access to Loft

**Bedroom One 13'2"max x 12'11"max (4.01mmax x 3.94mmax)**  
 Double glazed window . Radiator

**Bedroom Two 12'11"max x 8'10"max (3.94mmax x 2.69mmax)**  
 Double glazed window . Radiator.

**Bedroom Three 8'11"max x 8'11"max (2.72mmax x 2.72mmax)**  
 Double glazed window. Radiator

**Bathroom 8'11"max x 8'11"max (2.72mmax x 2.72mmax)**  
 Beautifully fitted to include a matching white suite of bath with shower over. Vanity unit with inset wash hand basin. Low flush WC. Heated towel rail. Fully wall tiled. Porcelain tiled floor. Recessed spotlights. Double glazed window.

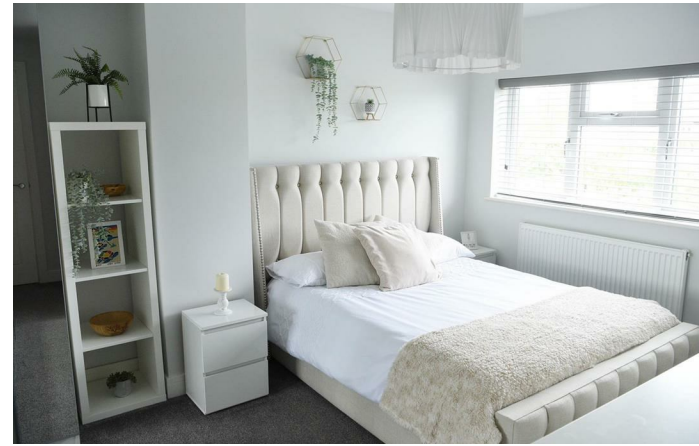
**Loft Room 8'11"max x 13'5" rhh (2.72mmax x 4.09m rhh)**  
 The Loft has been fully boarded and includes laminate flooring, with plentiful eaves storage , gas central heating Boiler and Three Sky Lights.

**Outside**

To the front of the property a gravelled area offers potential for off-street parking (subject to the required consents) - please note, the curb has not been dropped . The enclosed gardens to the rear have been tastefully designed, to include a lawn, a paved patio and a gravelled border.

**Agent Notes**

PUT IN ADDITIONAL NOTES SECTION UNDER



ROOMS



EPC :C

All main services are connected . ( Gas/ Electric / Water )

Tenure Information :FREEHOLD

Broadband/Mobile coverage- please check on link - [//checker.ofcom.org.uk/en-gb/broadband-coverage](http://checker.ofcom.org.uk/en-gb/broadband-coverage)

Any other Material Facts :Traditional Brick and block build with tiled roof.  
 All information provided by the vendor,please confirm details with a solicitor.

Council Tax Band :B

