



4 Bowmanston, Ayr

In Excess of £285,000

DONALD
ROSS
RESIDENTIAL



4 Bowmanston

Ayr

Elegant 4-bed courtyard country home with open-plan living, modern kitchen, three bathrooms, private gardens and home office, set in a quiet location within four miles of Ayr.

Council Tax band: F

Tenure: Freehold

EPC Energy Efficiency Rating: D

EPC Environmental Impact Rating: C

- Charming four-bedroom courtyard country home
- Bright open-plan lounge, dining and kitchen area
- Contemporary fitted kitchen with island and integrated appliances
- Versatile ground floor with office/study and shower room
- Principal bedroom with stylish en-suite shower room
- Three further generous double bedrooms
- Family bathroom with skylight plus additional shower room
- French doors opening to enclosed private gardens
- Private allocated parking for two vehicles
- Quiet setting located within four miles of Ayr

















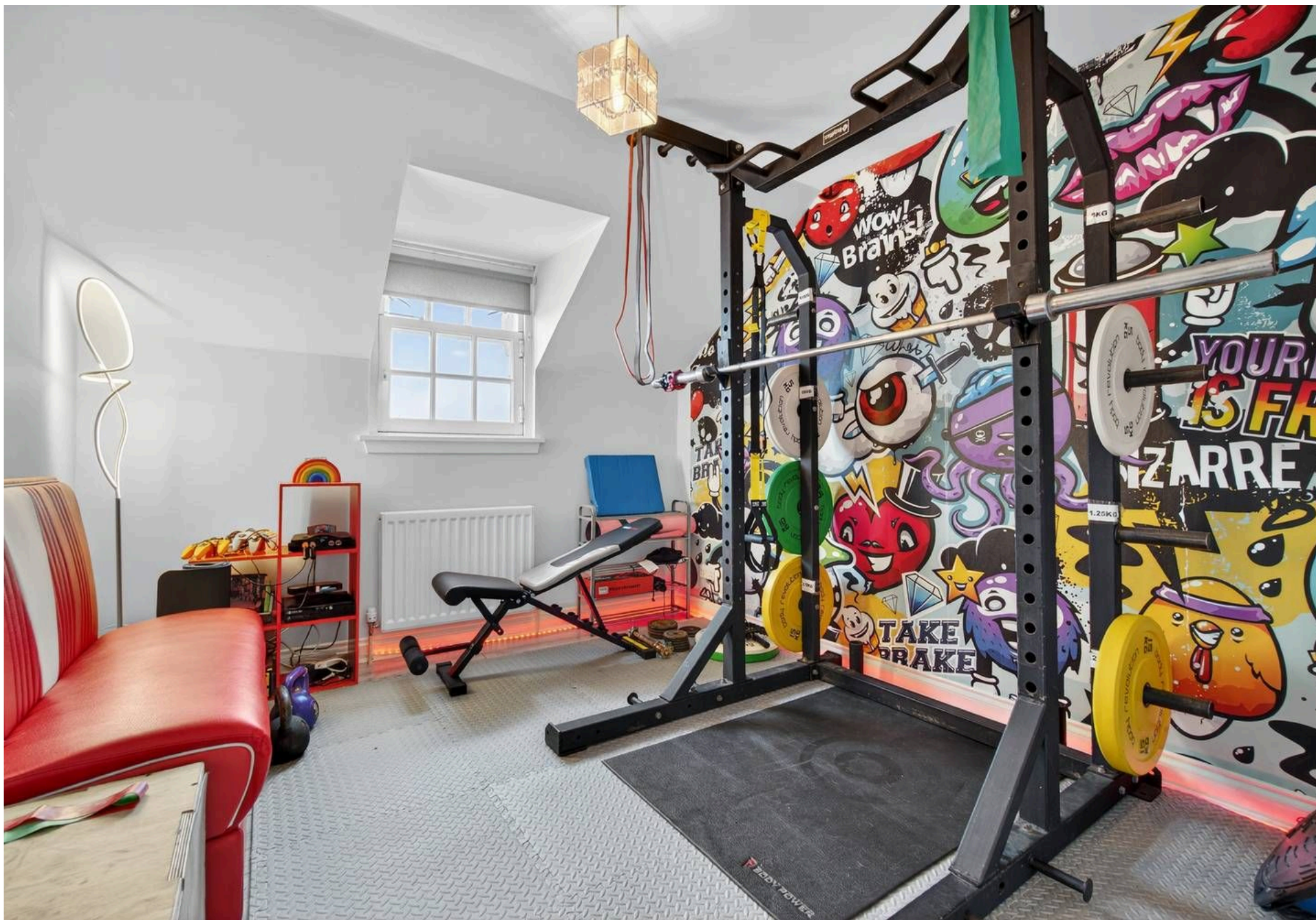








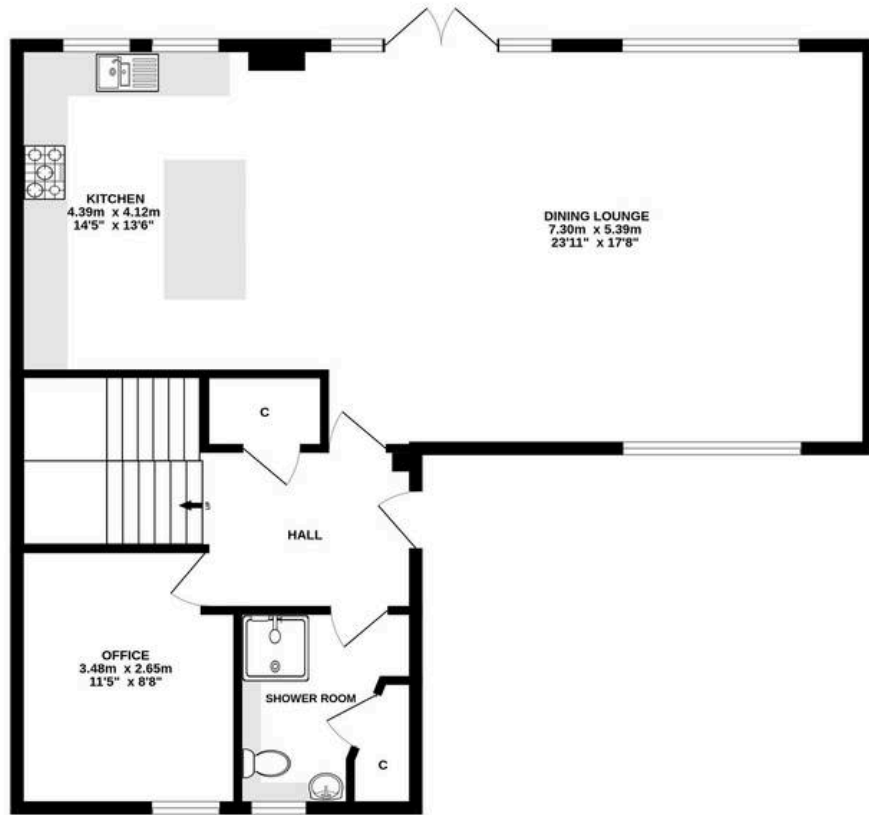




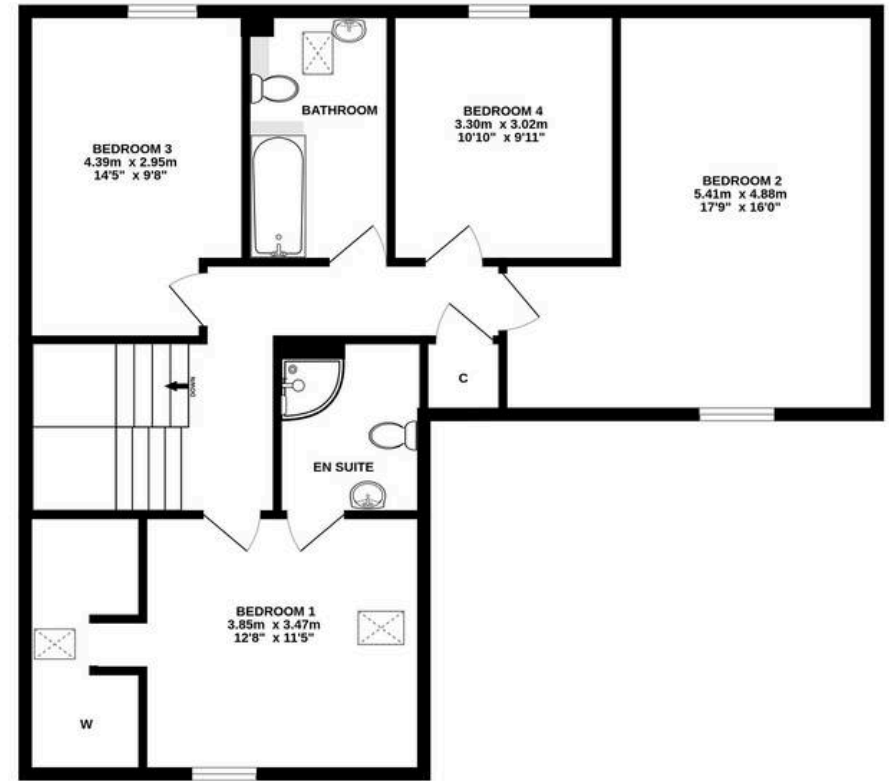




GROUND FLOOR



1ST FLOOR



ALL MEASUREMENTS TAKEN AT WIDEST POINT.

Whilst every attempt has been made to ensure the accuracy of the floorplan contained here, measurements of doors, windows, rooms and any other items are approximate and no responsibility is taken for any error, omission or mis-statement. This plan is for illustrative purposes only and should be used as such by any prospective purchaser. The services, systems and appliances shown have not been tested and no guarantee as to their operability or efficiency can be given.
Made with Metropix ©2025



Donald Ross Residential Ayr

Donald Ross, 1 Beresford Terrace – KA7 2ER

01292 288222 • office@donaldross.co.uk • www.donaldross.co.uk

While every effort has been made to ensure accuracy, buyers should independently verify all details and review the Home Report before submitting an offer. No warranty or representation is given regarding the property, and neither the agent nor the seller accepts responsibility for any inaccuracies. Buyers must satisfy themselves on all legal aspects.