



7 Macrae Drive, Prestwick

In Excess of £345,000

DONALD
ROSS
RESIDENTIAL



7 Macrae Drive

Prestwick

Rarely available 4-bed villa with garage and generous garden in prime Prestwick cul-de-sac just minutes from the town centre, schools, and train station. Flexible layout ideal for families.

Council Tax band: G

Tenure: Freehold

- Substantial 4-bedroom detached villa in sought-after location
- Flexible layout with ground floor bedrooms including en-suite
- Generous entrance hallway with excellent storage
- Bright and spacious lounge/dining area with garden outlook
- Kitchen and dining room with ample storage and workspace
- Three double bedrooms located on the first floor
- Stylish bathroom and convenient ground floor cloakroom with WC
- Integral garage and monobloc driveway
- Private enclosed rear garden backing onto woodland
- Located within a quiet cul-de-sac minutes from town centre amenities

























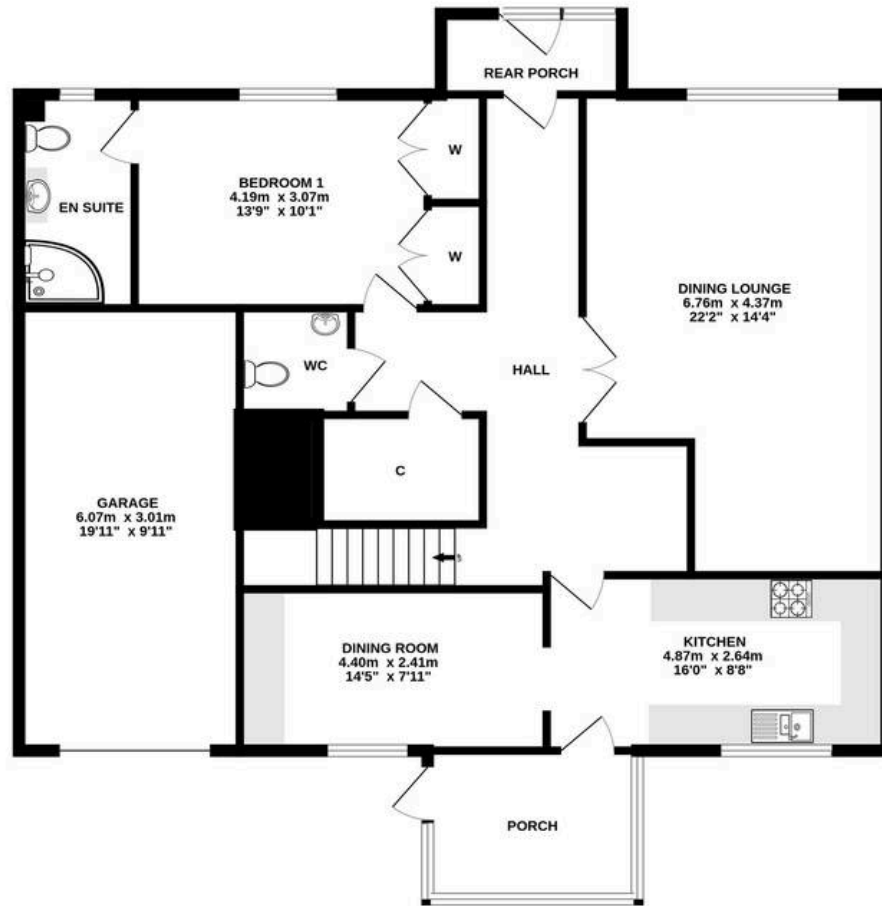




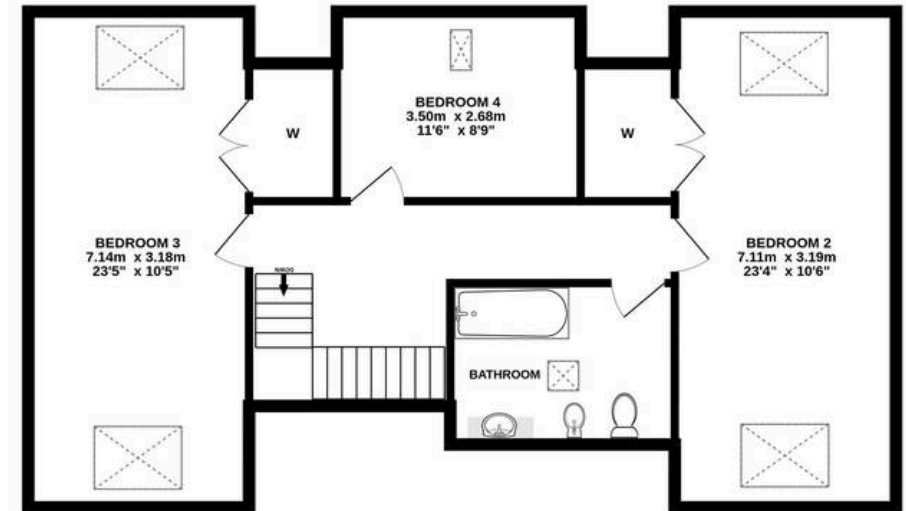




GROUND FLOOR



1ST FLOOR



ALL MEASUREMENTS TAKEN AT WIDEST POINT.

Whilst every attempt has been made to ensure the accuracy of the floorplan contained here, measurements of doors, windows, rooms and any other items are approximate and no responsibility is taken for any error, omission or mis-statement. This plan is for illustrative purposes only and should be used as such by any prospective purchaser. The services, systems and appliances shown have not been tested and no guarantee as to their operability or efficiency can be given.
Made with Metropix ©2025



Donald Ross Residential Ayr

Donald Ross, 1 Beresford Terrace – KA7 2ER

01292 288222 • office@donaldross.co.uk • www.donaldross.co.uk

While every effort has been made to ensure accuracy, buyers should independently verify all details and review the Home Report before submitting an offer. No warranty or representation is given regarding the property, and neither the agent nor the seller accepts responsibility for any inaccuracies. Buyers must satisfy themselves on all legal aspects.